

INSTAFLEX –
the complete piping system
d 16 – d 110 for potable
water installations

As well as for
industrial applications

INSTAFLEX

Fittings for Electrofusion Jointing
Product Range 2005



Contents

	Page
Pipes and Accessories	6
Fittings for Electrofusion Jointing	8
Fittings for Compression Joints	18
Special Reducers	19
Manifolds and Accessories	20
Valves	23
Machines and Tools	29
Numerical Product Range	
Arranged according to catalogue number	32
Arranged according to code	36
General Conditions of Supply of Georg Fischer Building Technology Ltd	42

General Information

Explanation of signs

PB	Polybutylene
PE	Polyethylene
PP	Polypropylene
d	Pipe outside diameter
EPDM	Ethylene propylene rubber
s	Wall thickness of the pipe
d _{cu}	Copper pipe outside diameter
DN	Nominal bore
Ø	Diameter
LK	Hole circle
SW	Dimension across flats (A/F)
G	Pipe thread, not pressure tight in the thread (with flat seat) to ISO 228
R	Taper male thread, pressure tight in the thread to ISO 7
Rp	Parallel female thread, pressure tight in the thread to ISO 7
M	Metric thread to ISO 261
m	Meter
SP	Items per standard pack
g	Gramme

Dimensions

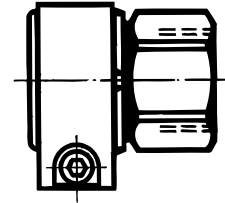
All dimensions are given in mm and are intended as nominal or average sizes. Subject to alteration resulting from modifications in design.

SW of the compression fittings

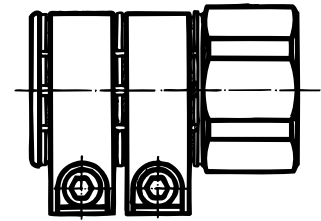
d 16 SW = 24

d 20 SW = 27

Compression Fittings



d 25 and d 32
with one tightening strap



d 40, d 50, d 63, d 75
with two tightening straps

For compressed air applications with air containing mineral oil, EPDM gaskets must be replaced by NBR units.

This mainly concerns unions and flange connections.

NBR gaskets are not contained in this Product Range. Please contact the George Fischer sales consultant or sales support office assigned to your sales area.

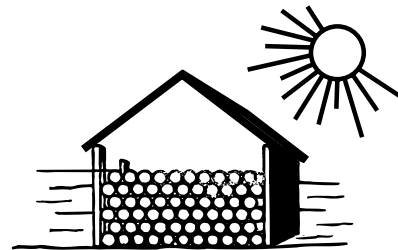
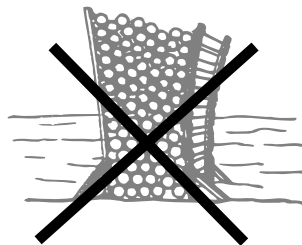
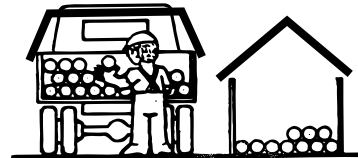
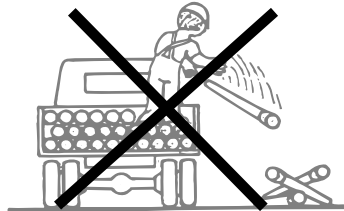
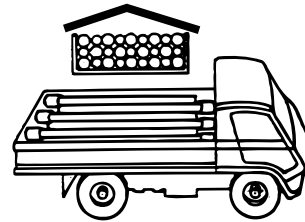
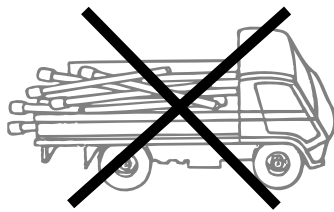
+GF+ and **INSTAFLEX** are registered trademarks.

Working with plastic pipes and fittings

Transport and storage of plastic pipes

WRONG

RIGHT



Plastics are materials sensitive to impact and crushing at low temperatures. The temperature limit depends on the relevant material.

PP-R	+5 °C
PVC-C	
PB	-10 °C

Below these temperatures pipes and fittings would have to be protected particularly from impacts, crushing and other external mechanical stresses.



Safety instruction

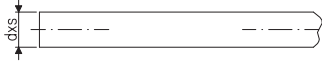
Plastic pipes and plastic fittings must be protected in principle from external influences. Direct sunlight, impacts and compressive stresses should be avoided. The pipes and fittings must be left in their packing until used. They should not be stored out of doors.

Pipes in bars

3714

Pipe PB in bars of 5,8 m

packed in cardboard boxes

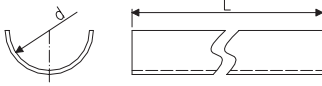


d x s	Code	SP	kg	
16x 2,2	760 856 606	9 x 5,8 m ¹	0,100	
20x 2,8	760 856 607	9 x 5,8 m ¹	0,150	
25x 2,3	760 856 608	10 x 5,8 m ¹	0,165	
32x 2,9	760 856 609	10 x 5,8 m ¹	0,270	
40x 3,7	760 856 610	10 x 5,8 m ¹	0,416	
50x 4,6	760 856 611	7 x 5,8 m ¹	0,645	
63x 5,8	760 856 612	7 x 5,8 m ¹	1,020	
75x 6,8	760 856 613	1 x 5,8 m ¹	1,440	
90x 8,2	760 856 614	1 x 5,8 m ¹	2,060	
110x10,0	760 856 615	1 x 5,8 m ¹	3,050	

Accessories

3931

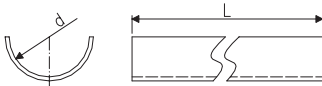
Clip-carrier



d	Code	SP	kg	L	
16	760 856 602	10 x 3m ¹	0,270	3m ¹	
20	760 856 603	10 x 3m ¹	0,320	3m ¹	
25	760 856 604	10 x 3m ¹	0,480	3m ¹	
32	760 856 605	10 x 3m ¹	0,600	3m ¹	

3929

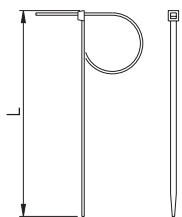
Carrier



d	Code	SP	kg	L	
40	760 854 928	10x 3m ¹	0,360	3m ¹	
50	760 854 929	10x 3m ¹	0,450	3m ¹	
63	760 854 930	10x 3m ¹	0,570	3m ¹	
75	760 854 985	10x 3m ¹	0,680	3m ¹	

3930

Pipe binder



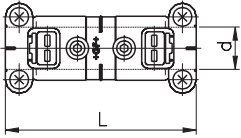
d	Code	SP	kg	L	
16- 40	760 853 283	100	0,001	200	
50- 75	760 853 284	100	0,003	300	
90-110	760 854 984	100	0,001	430	

Fittings for Electrofusion Jointing

6200

Electrofusion coupler

Middle stop can be broken out

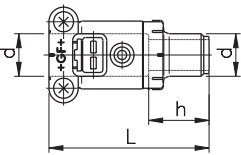


d	Code	SP	kg	L	
16	761 069 200	1	0,023	76	
20	761 069 201	1	0,027	80	
25	761 069 202	1	0,041	85	
32	761 069 203	1	0,053	85	
40	761 069 204	1	0,084	95	
50	761 069 205	1	0,121	99	
63	761 069 206	1	0,184	102	
75	761 069 265	1	0,310	134	
90	761 069 266	1	0,474	147	
110	761 069 267	1	0,716	160	

6201

Electrofusion adaptor

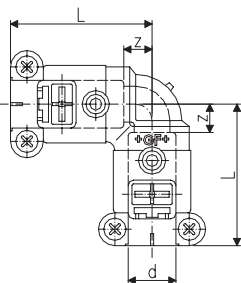
Spigot for socket fusion



d-d	Code	SP	kg	L	h	
16	761 069 207	1	0,014	60	23	
20	761 069 208	1	0,017	61	22	
25	761 069 209	1	0,026	67	25	
32	761 069 210	1	0,037	71	29	
40	761 069 211	1	0,060	79	32	
50	761 069 212	1	0,095	85	36	
63	761 069 213	1	0,151	94	43	

6202

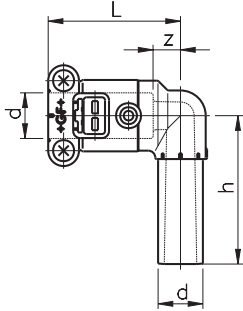
Electrofusion elbow 90°



d	Code	SP	kg	L	z	
16	761 069 214	1	0,023	47	10	
20	761 069 215	1	0,027	54	14	
25	761 069 216	1	0,039	58	16	
32	761 069 217	1	0,079	60	18	
40	761 069 218	1	0,128	69	22	
50	761 069 219	1	0,206	78	29	
63	761 069 220	1	0,328	86	36	
75	761 069 221	1	0,325	112	45	
90	761 069 222	1	0,593	127	54	
110	761 069 223	1	0,980	146	66	

6222

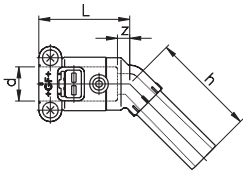
Elbow 90° socket-spigot



d	Code	SP	kg	L	h	z
16	761 069 434	1	0,025	47	53	10
20	761 069 435	1	0,035	54	58	14
25	761 069 436	1	0,047	58	62	16
32	761 069 437	1	0,064	60	66	18
40	761 069 438	1	0,113	69	77	22
50	761 069 439	1	0,181	78	85	29
63	761 069 440	1	0,290	86	96	36

6223

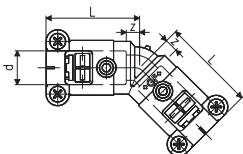
Elbow 45° socket spigot



d	Code	SP	kg	L	h	z
16	761 069 447	1	0,014	44	50	6
20	761 069 448	1	0,030	46	54	7
25	761 069 449	1	0,042	50	57	8
32	761 069 450	1	0,059	51	60	9
40	761 069 451	1	0,098	58	67	11
50	761 069 452	1	0,156	63	75	14
63	761 069 453	1	0,242	68	79	17

6203

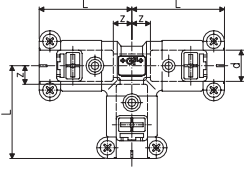
Electrofusion elbow 45°



d	Code	SP	kg	L	z
16	761 069 227	1	0,023	44	6
20	761 069 228	1	0,027	46	7
25	761 069 229	1	0,039	50	8
32	761 069 230	1	0,059	51	9
40	761 069 231	1	0,070	58	11
50	761 069 232	1	0,147	63	14
63	761 069 233	1	0,328	68	17
75	761 069 234	1	0,325	88	21
90	761 069 235	1	0,593	98	25
110	761 069 236	1	0,880	111	31

6204

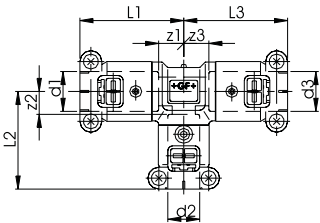
Electrofusion Tee 90° equal



d	Code	SP	kg	L	z
16	761 069 237	1	0,053	47	10
20	761 069 238	1	0,067	54	14
25	761 069 239	1	0,089	58	16
32	761 069 240	1	0,116	60	18
40	761 069 241	1	0,185	69	22
50	761 069 242	1	0,290	78	29
63	761 069 243	1	0,452	86	36
75	761 069 244	1	0,487	112	45
90	761 069 245	1	0,890	127	54
110	761 069 246	1	1,320	146	66

6205

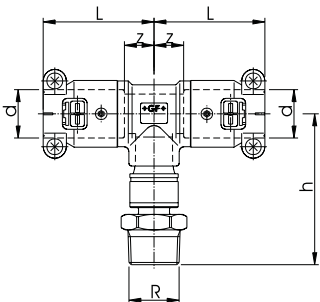
Electrofusion Tee 90° reducer



d1-d2-d3	Code	SP	kg	L1	L2	L3	z1	z2	z3
20-16-16	761 069 249	1	0,058	54	47	47	14	10	10
20-16-20	761 069 250	1	0,041	54	49	54	14	11	14
25-16-25	761 069 251	1	0,079	58	54	58	16	16	16
25-20-20	761 069 256	1	0,079	58	54	54	16	14	14
25-20-25	761 069 252	1	0,078	58	54	58	16	14	16
25-25-20	761 069 257	1	0,081	58	58	54	16	16	14
32-20-32	761 069 253	1	0,088	60	58	60	18	18	18
32-25-25	761 069 258	1	0,098	60	58	58	18	16	16
32-25-32	761 069 254	1	0,095	60	58	60	18	16	18
40-20-40	761 069 259	1	0,157	69	63	69	22	23	22
40-25-40	761 069 255	1	0,115	69	63	69	22	21	22
40-32-40	761 069 260	1	0,168	69	63	69	22	21	22
50-25-50	761 069 261	1	0,246	78	72	78	29	30	29
50-32-50	761 069 262	1	0,360	78	72	78	29	30	29
63-25-63	761 069 263	1	0,360	86	81	86	36	39	36
63-40-63	761 069 264	1	0,384	86	85	86	36	38	36

6224

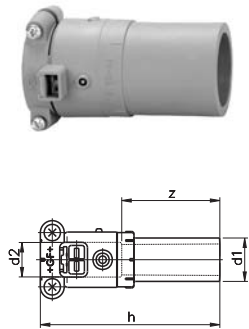
Adaptor Tee 90° with male thread



d-R-d	Code	SP	kg	L	h	z
25- ³ / ₄ -25	761 069 430	1	0,176	58	78	15
32-1-32	761 069 431	1	0,225	60	86	17

6207

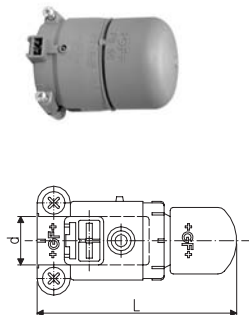
Electrofusion reducer



d1-d2	Code	SP	kg	h	z
20-16	761 069 277	1	0,023	83	45
25-16	761 069 278	1	0,026	83	46
25-20	761 069 279	1	0,026	86	47
32-16	761 069 457	1	0,033	86	48
32-20	761 069 280	1	0,030	84	45
32-25	761 069 281	1	0,038	89	47
40-20	761 069 458	1	0,055	102	62
40-25	761 069 459	1	0,060	104	62
40-32	761 069 282	1	0,060	95	53
50-20	761 069 460	1	0,070	102	62
50-25	761 069 461	1	0,075	104	62
50-32	761 069 462	1	0,075	95	53
50-40	761 069 283	1	0,091	103	56
63-20	761 069 463	1	0,096	102	62
63-25	761 069 464	1	0,103	104	62
63-32	761 069 284	1	0,101	95	53
63-40	761 069 465	1	0,121	103	56
63-50	761 069 285	1	0,141	106	57
75-63	761 069 286	1	0,232	129	78
90-63	761 069 287	1	0,289	128	77
90-75	761 069 288	1	0,362	143	76
110-63	761 069 289	1	0,414	135	84
110-75	761 069 290	1	0,460	150	83
110-90	761 069 291	1	0,491	165	92

6206

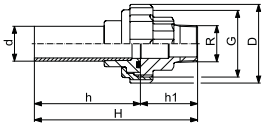
Electrofusion cap



d	Code	SP	kg	L
16	761 069 270	1	0,022	67
20	761 069 271	1	0,025	70
25	761 069 272	1	0,036	77
32	761 069 273	1	0,054	83
40	761 069 274	1	0,095	95
50	761 069 275	1	0,153	104
63	761 069 276	1	0,265	116

Unions

6220

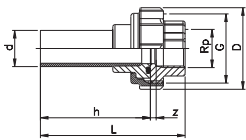


Adaptor union

Spigot for electrofusion male thread
Including O-Ring EPDM quality for potable water

d-Rp	Code	SP	kg	H	h	h1	G	D
16-1/2	761 069 400	1	0,260	106	68	38	1	41
20-1/2	761 069 401	1	0,280	110	70	40	1 1/4	46
25-3/4	761 069 402	1	0,325	117	76	41	1 1/2	52
32-1	761 069 403	1	0,465	123	78	45	2	64
40-1 1/4	761 069 404	1	0,700	136	88	48	2 1/2	79
50-1 1/2	761 069 405	1	0,830	141	93	48	2 3/4	85
63-2	761 069 406	1	1,205	152	98	54	3 1/2	104

6221

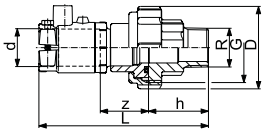


Adaptor union

Spigot for electrofusion female thread
Including O-Ring EPDM quality for potable water

d-Rp	Code	SP	kg	H	h	z	G	D
16-1/2	761 069 407	1	0,210	90	68	9	1	41
20-1/2	761 069 408	1	0,235	94	70	10	1 1/4	46
25-3/4	761 069 409	1	0,295	100	76	9	1 1/2	52
32-1	761 069 410	1	0,405	103	78	8	2	64
40-1 1/4	761 069 411	1	0,600	114	88	7	2 1/2	79
50-1 1/2	761 069 412	1	0,730	119	93	7	2 3/4	85
63-2	761 069 413	1	1,055	126	98	5	3 1/2	104

6225

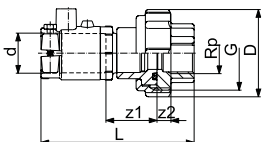


Adaptor union

Socket for electrofusion male thread
Including O-Ring EPDM quality for potable water

d-R	Code	SP	kg	L	h	z	G	D
16-1/2	761 069 475	1	0,270	106	38	31	1	41
20-1/2	761 069 476	1	0,284	109	40	30	1 1/4	50
25-3/4	761 069 477	1	0,332	116	41	33	1 1/2	56
32-1	761 069 478	1	0,476	124	45	37	2	69
40-1 1/4	761 069 479	1	0,711	137	48	42	2 1/2	83
50-1 1/2	761 069 480	1	0,840	143	48	46	2 3/4	90
63-2	761 069 481	1	1,232	158	54	53	3 1/2	110

6226



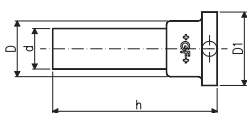
Adaptor union

Socket for electrofusion female thread
Including O-Ring EPDM quality for potable water

d-Rp	Code	SP	kg	L	z1	z2	G	D
16-1/2	761 069 482	1	0,220	90	31	9	1	41
20-1/2	761 069 483	1	0,244	93	30	10	1 1/4	50
25-3/4	761 069 484	1	0,302	99	33	9	1 1/2	56
32-1	761 069 485	1	0,416	104	37	8	2	69
40-1 1/4	761 069 486	1	0,611	115	42	7	2 1/2	83
50-1 1/2	761 069 487	1	0,740	121	46	7	2 3/4	90
63-2	761 069 488	1	1,082	132	53	5	3 1/2	110

Flange Connections

6209

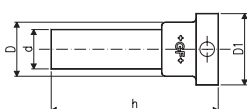


Flange adaptor flat with groove and spigots for electrofusion

suitable for flange or union nut including O-Ring, EPDM quality for potable water

d	Code	SP	kg	h	D	D1
63	761 069 312	1	0,155	98	76	90
75	761 069 313	1	0,309	158	90	106
90	761 069 314	1	0,496	172	109	125
110	761 069 315	1	0,783	186	131	150

6210

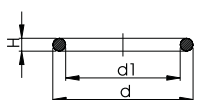


Flange adaptor flat with spigot for electrofusion

suitable for flange or union nut

d	Code	SP	kg	h	D	D1
63	761 069 326	1	0,146	93	76	90
75	761 069 327	1	0,292	153	90	106
90	761 069 328	1	0,471	167	109	125
110	761 069 329	1	0,745	180	131	150

5080



O-Ring, EPDM quality for potable water

d	Code	SP	kg	d1	D	H
16	761 066 738	10	0,002	18.6	25.7	3.5
20	761 066 720	10	0,002	23.4	30.5	3.5
25	761 066 721	10	0,002	28.2	35.2	3.5
32	761 066 722	10	0,002	36.1	43.2	3.5
40	761 066 723	10	0,003	43.8	54.5	5.3
50	761 066 724	10	0,004	53.3	64.0	5.3
63	761 066 725	10	0,005	69.2	79.9	5.3
75	761 066 952	5	0,006	81.9	92.5	5.3
90	761 066 953	5	0,008	101	111.6	5.3
110	761 066 954	5	0,016	120	134	7.0

5085



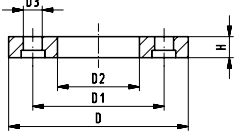
Backing flanges

suitable for flange adaptor

Material: Casting, GFK coated

Tighten the screws with torque, as indicated

Commercially available screws, nuts, washers



d	Code	SP	kg	D	D1	D2	D3	H	AL	screws
20	761 065 270	2	0,400	106	65	28	14	18	4	M 12x 70
25	761 065 271	2	0,500	118	75	34	14	18	4	M 12x 75
32	761 065 272	2	0,500	122	85	42	14	17	4	M 12x 75
40	761 065 273	2	0,600	142	100	51	18	17	4	M 16x 80
50	761 065 274	2	0,800	156	110	62	18	19	4	M 16x 85
63	761 065 275	2	0,900	171	125	78	18	20	4	M 16x 85
75	761 065 276	2	1,200	191	145	92	18	21	4	M 16x 90
90	761 065 277	2	1,200	206	160	110	18	21	8	M 16x 90
110	761 065 278	2	1,500	226	180	133	18	22	8	M 16x 90

5087



Flange gasket

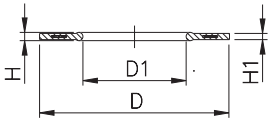
Only for adaptor metal plastic

suitable for flange adaptor flat

Material: EPDM

The gasket is designed so that it is centered by the flange screws

D corresponds to the centering on the inner diameter of the screw crown



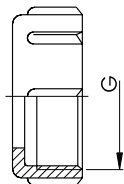
d	Code	SP	kg	D	D1	H	H1
20	761 066 329	5	0,009	51	20	3	4
25	761 066 330	5	0,012	61	25	3	4
32	761 066 331	5	0,015	71	32	3	4
40	761 066 332	5	0,019	82	40	3	4
50	761 066 333	5	0,022	92	50	3	4
63	761 066 334	5	0,041	107	63	4	5
75	761 066 315	1	0,054	127	75	4	5
90	761 066 316	1	0,060	142	90	4	5
110	761 066 317	1	0,083	162	110	5	6

5081



Union nut

suitable for flange adaptor and union



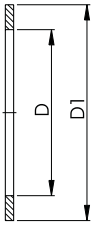
d-G	Code	SP	kg
16-1	761 066 980	10	0,120
20-1 ¹ / ₄	761 066 971	10	0,090
25-1 ¹ / ₂	761 066 972	10	0,110
32-2	761 066 973	10	0,130
40-2 ¹ / ₂	761 066 974	10	0,180
50-2 ³ / ₄	761 066 975	10	0,210
63-3 ¹ / ₂	761 066 976	2	0,280

6230



Seal

suitable for adaptor union for water meter, for valves and adaptor with flat seal
Material: EPDM



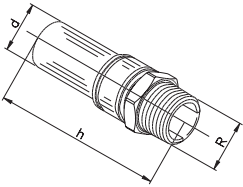
G	Code	SP	kg	D	D1	
1/2	761 069 420	10	0,001	13	20	
3/4	761 069 421	10	0,001	17	24	
1	761 069 422	10	0,002	21	30	
1 1/4	761 069 423	10	0,002	27	38	
1 1/2	761 069 424	10	0,003	32	44	
2	761 069 425	10	0,004	42	55	
2 1/4	761 069 426	10	0,005	46	62	
2 3/4	761 069 427	10	0,007	60	78	

Adapter on thread and valves

6214

Adaptor with male thread

spigot for electrofusion male thread

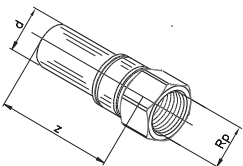


d-R	Code	SP	kg	h	
16-1/2	761 069 385	1	0,082	84	
20-1/2	761 069 386	1	0,093	86	
20-3/4	761 069 387	1	0,115	89	
25-3/4	761 069 388	1	0,134	92	
25-1	761 069 389	1	0,171	94	
32-1	761 069 390	1	0,207	94	
40-1 1/4	761 069 391	1	0,615	148	
50-1 1/2	761 069 392	1	0,930	158	
63-2	761 069 393	1	1,387	173	

6215

Adapter with female thread

spigot for electrofusion female thread

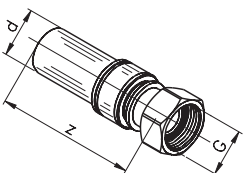


d-Rp	Code	SP	kg	z	
16-1/2	761 069 360	1	0,086	68	
20-1/2	761 069 361	1	0,099	70	
20-3/4	761 069 362	1	0,136	71	
25-3/4	761 069 363	1	0,145	72	
25-1	761 069 364	1	0,184	74	
32-1	761 069 365	1	0,209	74	
40-1 1/4	761 069 366	1	0,615	118	
50-1 1/2	761 069 367	1	0,930	124	
63-2	761 069 368	1	1,387	130	

6216

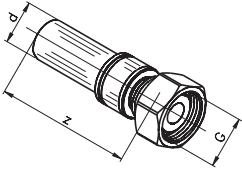
Adapter with loose union nut, flat seal

spigot for electrofusion-female thread
including flat seal EPDM



d-G	Code	SP	kg	z	
16-3/4	761 069 370	1	0,093	71	
20-3/4	761 069 369	1	0,126	84	
20-1	761 069 371	1	0,154	75	
25-3/4	761 069 372	1	0,146	87	
25-1	761 069 373	1	0,204	86	
25-1 1/4	761 069 374	1	0,231	78	
32-1	761 069 375	1	0,210	92	
32-1 1/4	761 069 377	1	0,292	87	
32-1 1/2	761 069 376	1	0,292	78	
40-1 1/4	761 069 378	1	0,510	136	
40-1 1/2	761 069 379	1	0,598	137	
40-2	761 069 381	1	0,824	141	
50-1 3/4	761 069 384	1	0,898	128	
50-2 1/4	761 069 383	1	0,820	154	
63-2 3/8	761 069 394	1	1,421	160	
63-2 3/4	761 069 395	1	0,854	137	

6217

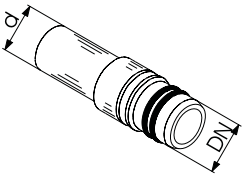


Adaptor with loose union nut, flat seal, with centering

spigot for electrofusion - female thread
including gasket, tesnit blue free of asbestos, according to DIN 3754

d-G	Code	SP	kg	z	
16-1/2	761 069 380	1	0,086	76	
20-3/4	761 069 382	1	0,128	78	

6218



Adaptor

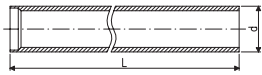
for Kemper UP-Valve 56008

d-DN	Code	SP	kg	
20-15	761 069 469	1	0,102	
25-20	761 069 470	1	0,140	
32-25	761 069 471	1	0,209	

Fittings for Compression Joints

5052

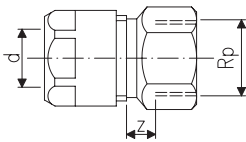
Adaptor pipe for compression fittings



d	Code	SP	kg	L
32	761 066 712	5	0,080	300
40	761 066 714	5	0,130	300
50	761 066 716	3	0,200	300
63	761 066 718	3	0,300	300
75	761 066 308	1	0,430	300

3301

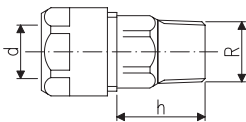
Adaptor with female thread



d-Rp	Code	SP	kg	z
16-1/2	760 853 104	5	0,125	12
16-3/4	760 853 105	5	0,128	15
20-1/2	760 853 194	5	0,196	14
20-3/4	760 853 153	5	0,182	16
25-3/4	760 854 735	2	0,400	16
25-1	760 869 982	2	0,430	16
32-1	760 854 736	2	0,500	16
40-1 1/4	760 854 737	1	0,780	20
50-1 1/2	760 854 738	1	1,136	21
63-2	760 854 739	1	1,567	21

3310

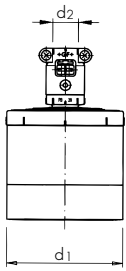
Adaptor with male thread



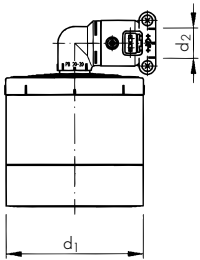
d-R	Code	SP	kg	h
16-1/2	760 853 107	5	0,111	30
16-3/4	760 853 108	5	0,161	34
20-1/2	760 853 195	5	0,202	38
20-3/4	760 853 138	5	0,222	36
25-3/4	760 854 745	2	0,347	37
25-1	760 869 983	2	0,400	37
32-1	760 854 746	2	0,495	39
40-1 1/4	760 854 747	1	0,733	46
50-1 1/2	760 854 748	1	1,200	47
63-2	760 854 749	1	1,480	55
75-2 1/2	760 869 992	1	2,240	60

Special reducers

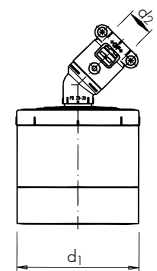
Order from



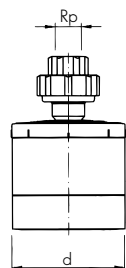
$d_1 \backslash d_2$	16	20	25	32	40	50
75						
90						
110						



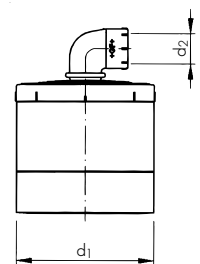
$d_1 \backslash d_2$	16	20	25	32	40	50
75						
90						
110						



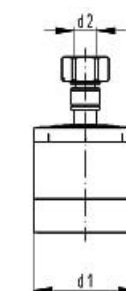
$d_1 \backslash d_2$	16	20	25	32	40	50
75						
90						
110						



$d \backslash R_p$	$\frac{1}{2}$	$\frac{3}{4}$	1
75			
90			
110			



$d_1 \backslash d_2$	16	20	25	32	40	50
75						
90						
110						



$d_1 \backslash d_2$	$16-\frac{1}{2}$	$20-\frac{1}{2}$	$20-\frac{3}{4}$	$25-\frac{3}{4}$	25-1	32-1
75						
90						
110						

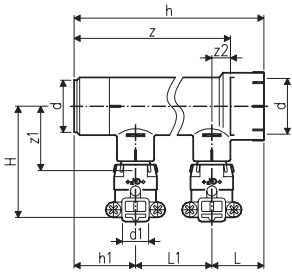
Manifold and Accessories

Manifold in Polybutylene d 25 (DN 20)

5062

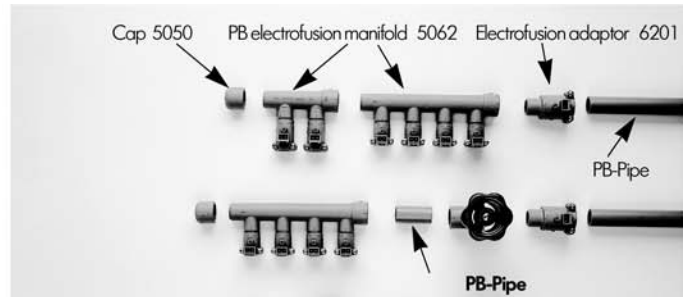
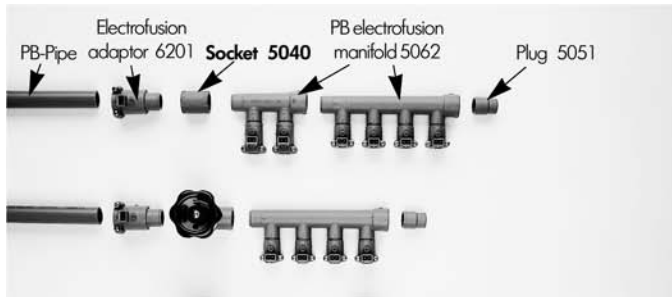
ELS Manifold PB

electrofusion connections



d-d1		Code	SP	kg	
25-16	single	761 066 250	1	0,031	
25-20	single	761 066 251	1	0,041	
25-16	double	761 066 252	1	0,062	
25-16	triple	761 066 253	1	0,092	
25-16	4 fold	761 066 254	1	0,121	

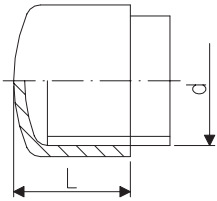
d-d1		L	L1	h	h1	H	z	z1	z2	
25-16	single	31	-	63	32	60	45	36	13	
25-20	single	39	-	78	39	64	60	35	21	
25-16	double	31	45	108	32	60	90	36	13	
25-16	triple	31	45	153	32	60	135	36	13	
25-16	4 fold	31	45	198	32	60	180	36	13	



Accessories for Manifolds from Product Range socket fusion

5050

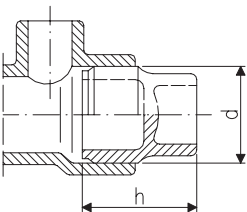
Cap



d	Code	SP	kg	L	
16	761 066 650	10	0,006	22	
20	761 066 651	10	0,010	24	
25	761 066 652	10	0,014	28	
32	761 066 653	10	0,022	32	
40	761 066 654	10	0,024	38	
50	761 066 655	10	0,050	44	
63	761 066 656	5	0,079	50	

5051

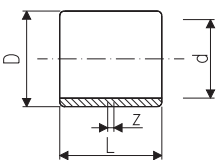
Plug



d	Code	SP	kg	h	
25	761 066 938	10	0,008	33	

5040

Socket



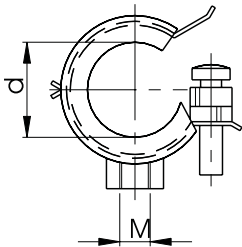
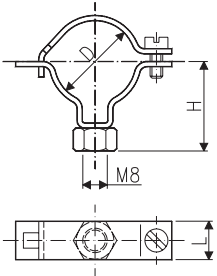
d	Code	SP	kg	L	D	z	
16	761 066 660	10	0,009	33	22	3	
20	761 066 661	10	0,014	33	26	3	
25	761 066 662	10	0,020	39	32	3	
32	761 066 663	10	0,033	43	40	3	
40	761 066 664	10	0,048	48	51	4	
50	761 066 665	10	0,069	54	64	4	
63	761 066 666	2	0,120	60	81	4	
75	761 066 667	2	0,150	69	91	7	
90	761 066 668	2	0,250	80	110	8	
110	761 066 669	2	0,440	94	133	10	

Accessories

3292 / 3286

Mounting bracket M8

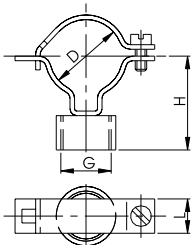
for service cabinet



manifold	Code	SP	kg	D	H	L	Execution
3292 ^{3/4}	760 853 187	10	0,051	26	32	15	without rubber
3286 ^{3/4}	760 856 212	10	0,029	26	30	18	with rubber

3293

Mounting bracket G 1/2"



manifold	Code	SP	kg	D	H	L	G
^{3/4}	760 853 128	10	0,084	26	38	15	1/2"

Valves

Valves in Polybutylene (do not use as drain valve)

6211



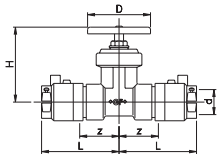
Valve PB

for electrofusion

Gasket: EPDM quality for potable water

Handweel antracite with green/red changeover disk

(do not use as drain valve)



d (DN)	Code	SP	kg	H	L	z	D
20 (15)	761 069 330	1	0,396	86	86	47	70
25 (20)	761 069 331	1	0,410	86	89	47	70
32 (25)	761 069 332	1	0,440	91	94	52	70
40 (32)	761 069 333	1	1,140	155	112	65	90
50 (40)	761 069 334	1	1,270	155	120	71	90
63 (50)	761 069 335	1	1,599	155	141	90	90

6208



Valve PB with spigot G 1/4" for drain

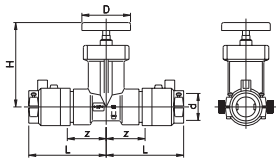
for electrofusion

Gasket: EPDM quality for potable water

Handweel antracite with green/red changeover disk

Drain valve must be ordered seperately

(do not use as drain valve)



d (DN)	Code	SP	kg	H	L	z	D
20 (15)	761 069 294	1	0,445	86	86	47	70
25 (20)	761 069 295	1	0,452	86	89	47	70
32 (25)	761 069 296	1	0,494	91	94	52	70
40 (32)	761 069 297	1	1,160	155	112	65	90
50 (40)	761 069 298	1	1,290	155	120	71	90
63 (50)	761 069 299	1	1,624	155	141	90	90

6212



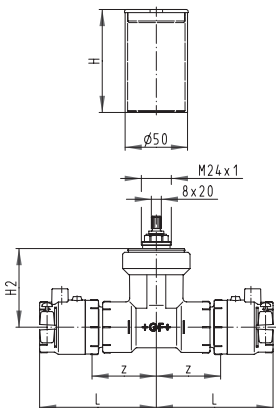
Valve PB concealed

for finished mounting set

for electrofusion

Gasket: EPDM for potable water

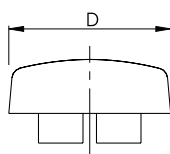
(do not use as drain valve)



d	Code	SP	kg	
20 (15)	761 069 342	1	0,396	For dimensions see PB-valve
25 (20)	761 069 343	1	0,410	
32 (25)	761 069 344	1	0,450	

5074**Drain valve and plug**

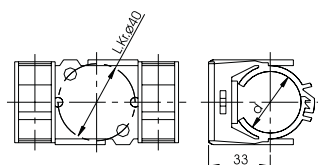
G	Code	SP	kg	
1/4	761 066 328	1	0,059	

3419**Cap chromium, to valve PB concealed**

d	Code	SP	kg	D	
20 - 32	760 853 786	1	0,032	68	

5096**Valve bracket for valve PB without drain**

for GIS or wall mounting

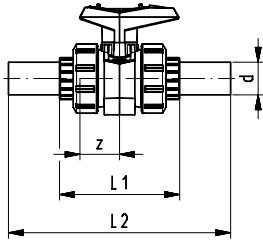
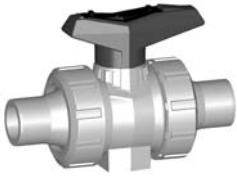


d	Code	SP	kg	
20 / 25	761 066 325	1	0,040	

5083

Ball valve PVC-C / PB spigot

no approval for potable water installation

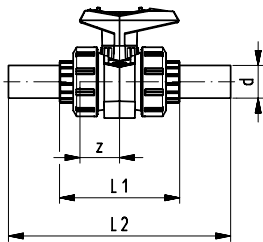


d (DN)	Code	SP	kg	L1	z	L2	
20 (15)	761 066 343	1	0,178	95	33	190	
25 (20)	761 066 344	1	0,267	109	36	208	
32 (25)	761 066 345	1	0,403	118	39	218	
40 (32)	761 066 346	1	0,724	137	47	250	
50 (40)	761 066 347	1	0,998	147	48	262	
63 (50)	761 066 348	1	1,828	168	46	268	

5089

Ball valve PP / PB spigot

no approval for potable water installation

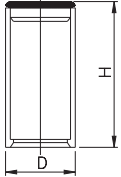


d (DN)	Code	SP	kg	L1	z	L2	
20 (15)	760 000 343	1	0,133	95	33	190	
25 (20)	760 000 344	1	0,202	109	36	208	
32 (25)	760 000 345	1	0,293	118	39	218	
40 (32)	760 000 346	1	0,504	137	47	250	
50 (40)	760 000 347	1	0,718	147	48	262	
63 (50)	760 000 348	1	1,323	168	46	268	

PB Valves

3417

Sleeve for valve PB concealed



d	Code	SP	kg	D	H
20 /25 /32	761 066 979	1	0,030	52	82.5

3420

Slide to valve PB

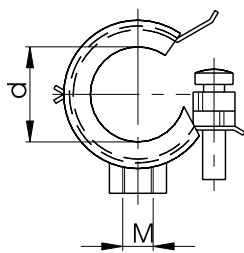


d	Code	SP	kg
20-32	761 066 335	1	0,028
40-63	761 066 336	1	0,114

5091

Pipe clamp

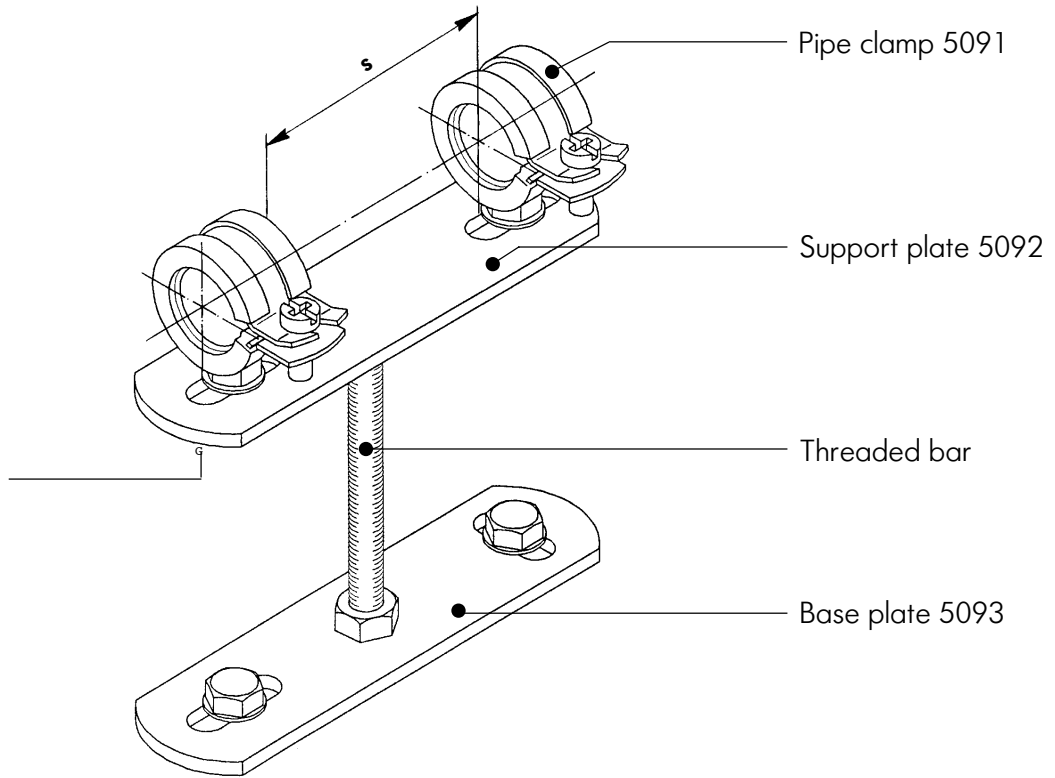
d16 - d75 = **M8**
d90 - d110 = **M10**



d	Code	SP	kg
16	761 066 296	50	0,040
20	761 066 297	50	0,050
25	761 066 298	50	0,051
32	761 066 299	50	0,060
40	761 066 300	50	0,081
50	761 066 301	50	0,091
63	761 066 302	50	0,132
75	761 066 303	50	0,152
90	761 066 304	50	0,191
110	761 066 305	50	0,232

Fixed point design

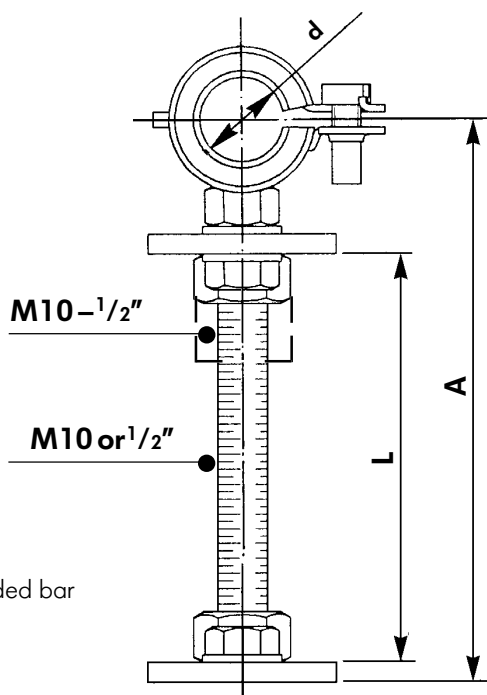
Cap screw
M 8 5095



s = Distance between pipe clamps

Support plate No cat.	1	2	3	4
Distance between pipe clamps «s»	33 – 63	64 – 94	97 – 125	132 – 162

Reducer
5094



L = Length of threaded bar

A = Axis space

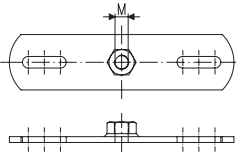
$L = A - x$

		x	
		M10	1/2"
Pipe clamp diameter d	Threaded bar		
	16	27	49
	20	31	53
	25	33	55
	32	38	60
	40	42	64
	50	46	68
	63	53	75
	75	60	82

5092

Support plate

for fixing point

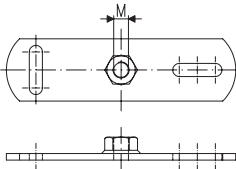


Size	Code	SP	kg	s	M
1	761 066 731	10	0,135	33-63	M10
2	761 066 732	10	0,170	64-94	M10
3	761 066 733	10	0,211	97-125	M10
4	761 066 734	10	0,253	132-162	M10

5093

Base plate

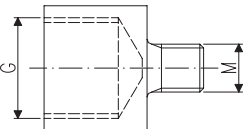
* for fixing point



	Code	SP	kg	M
*	761 066 741	50	0,159	M8
*	761 066 735	50	0,170	M10
*	761 066 311	20	0,181	G ¹ / ₂

5094

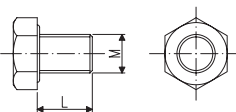
Reducer



M-G	Code	SP	kg
M8-G ¹ / ₂	761 066 318	20	0,055
M10-G ¹ / ₂	761 066 306	20	0,055

5095

Cap screw



M	Code	SP	kg	L
M8	761 066 307	100	0,009	10

Electrofusion control unit

6000



Electrofusion control unit Type HWSG-3

including welding cable for fittings without tool case
 Technical data: Voltage 230V, Power max 1400W, Frequency 50/60Hz, Protection class IP 54, Main connection (4m) with Euro standard plug

d	Code	SP	kg	Dimensions		
16-110	761 069 021	1	4,070	294x324x100		

6001



Sparepart welding cable for electrofusion fittings

d	Code	SP	kg	Length		
16-110	761 069 001	1	0,512	3 m		

6006



Ball-head socket wrench crossbar handle

d	Code	SP	kg	SW		
16-63	761 066 843	2	0,038	3		
75-110	761 066 844	2	0,038	4		

6007



1/4" screwdriver bit with ball-head

d	Code	SP	kg	SW		
16-63	761 066 845	5	0,007	3		
75-110	761 066 846	5	0,007	4		

3908



Pipe shears

d	Code	SP	kg			
16-25	760 853 279	1	0,269			

5300



Pipe cutter

d	Code	SP	kg			
32- 63	761 066 792	1	0,700			
75-110	761 066 834	1	1,430			

5301

Spare blades for Pipe cutter



d	Code	SP	kg	
32- 63	761 066 793	1	0,005	
75-110	761 066 835	1	0,010	

Special cleaner KS Tangit



	Code	SP	kg	
	799 298 023	1	0,890	

Execution 110V-240V switchable only for countries with 110V mains supply.

6000



Electrofusion control unit Type HWSG-3

Including welding cable fittings without tool case, primary cable 110V, primary cable 240V

Technical data

- Voltage 110-240V, Power max. 1500W
- Frequency 47/65 Hz
- Protection class IP 54

d	Code	SP	kg	Dimensions
16-110	761 069 015	1	11,500	294x324x147

6001

Welding cable for electrofusion fittings



d	Code	SP	kg	Length
16-110	761 069 011	1	0,300	3 m

6005

Primary cable 110V



	Code	SP	kg	Length
110V	761 069 012	1	0,400	4 m

6005

Primary cable 240V



	Code	SP	kg	Length
	761 069 013	1	0,380	4 m

Numerical Product Range

Arranged according to catalogue number

CATALOGUE NUMBER	DIMENSION	SP	PAGE	CODE	ARTICLE
3286	3/4	10	22	760 856 212	MOUNTING BRACKET M8
3292	3/4	10	22	760 853 187	MOUNTING BRACKET M8
3293	3/4	10	22	760 853 128	MOUNTING BRACKET G 1/2
3301	16-1/2	5	18	760 853 104	ADAPTOR
3301	16-3/4	5	18	760 853 105	ADAPTOR
3301	20-1/2	5	18	760 853 194	ADAPTOR
3301	20-3/4	5	18	760 853 153	ADAPTOR
3301	25-3/4	2	18	760 854 735	ADAPTOR
3301	25-1	2	18	760 869 982	ADAPTOR
3301	32-1	2	18	760 854 736	ADAPTOR
3301	40-11/4	1	18	760 854 737	ADAPTOR
3301	50-11/2	1	18	760 854 738	ADAPTOR
3301	63-2	1	18	760 854 738	ADAPTOR
3310	16-1/2	5	18	760 853 107	ADAPTOR
3310	16-3/4	5	18	760 853 108	ADAPTOR
3310	20-1/2	5	18	760 853 195	ADAPTOR
3310	20-3/4	5	18	760 853 138	ADAPTOR
3310	25-3/4	2	18	760 853 745	ADAPTOR
3310	25-1	2	18	760 869 983	ADAPTOR
3310	32-1	2	18	760 854 746	ADAPTOR
3310	40-11/4	1	18	760 854 747	ADAPTOR
3310	50-11/2	1	18	760 854 748	ADAPTOR
3310	63-2	1	18	760 854 749	ADAPTOR
3310	75-21/2	1	18	760 869 992	ADAPTOR
3417	25/32	1	26	761 066 979	SLEEVE VALVE PB
3419	1	1	24	760 853 786	CAP CHROMIUM PLATED
3420	20-32	1	26	761 066 335	SLIDE TO VALVE PB
3420	40-63	1	26	761 066 336	SLIDE TO VALVE PB
3714	16X2,2	9X5,8 M	6	760 856 606	PIPE PB
3714	20X2,8	9X5,8 M	6	760 856 607	PIPE PB
3714	25X2,3	10X5,8 M	6	760 856 608	PIPE PB
3714	32X2,9	10X5,8 M	6	760 856 609	PIPE PB
3714	40X3,7	10X5,8 M	6	760 856 610	PIPE PB
3714	50X4,6	7X5,8 M	6	760 856 611	PIPE PB
3714	63X5,8	7X5,8 M	6	760 856 612	PIPE PB
3714	75X6,8	1X5,8 M	6	760 856 613	PIPE PB
3714	90X8,2	1X5,8 M	6	760 856 614	PIPE PB
3714	110X10,0	1X5,8 M	6	760 856 615	PIPE PB
3908	16-25	1	29	760 853 279	PIPE SHEARS
3929	40 X3M	10X3 M	7	760 854 928	CARRIER
3929	50 X3M	10X3 M	7	760 854 929	CARRIER
3929	63 X3M	10X3 M	7	760 854 930	CARRIER
3929	75 X3M	10X3 M	7	760 854 985	CARRIER
3930	200	100	7	760 853 283	PIPE BINDER
3930	300	100	7	760 853 284	PIPE BINDER
3930	430	100	7	760 854 984	PIPE BINDER
3931	16	10X3 M	7	760 856 602	CLIP-CARRIER
3931	20	10X3 M	7	760 856 603	CLIP-CARRIER
3931	25	10X3 M	7	760 856 604	CLIP-CARRIER
3931	32	10X3 M	7	760 856 605	CLIP-CARRIER
5040	16	10	21	761 066 660	SOCKET
5040	20	10	21	761 066 661	SOCKET
5040	25	10	21	761 066 662	SOCKET
5040	32	10	21	761 066 663	SOCKET
5040	40	10	21	761 066 664	SOCKET
5040	50	10	21	761 066 665	SOCKET
5040	63	2	21	761 066 666	SOCKET
5040	75	2	21	761 066 667	SOCKET
5040	90	2	21	761 066 668	SOCKET
5040	110	2	21	761 066 669	SOCKET
5050	16	10	21	761 066 650	CAP
5050	20	10	21	761 066 651	CAP
5050	25	10	21	761 066 652	CAP
5050	32	10	21	761 066 653	CAP
5050	40	10	21	761 066 654	CAP
5050	50	10	21	761 066 655	CAP
5050	63	5	21	761 066 656	CAP
5051	25	10	21	761 066 938	PLUG
5052	32	5	18	761 066 712	ADAPTOR PIPE
5052	40	5	18	761 066 714	ADAPTOR PIPE
5052	50	3	18	761 066 716	ADAPTOR PIPE
5052	63	3	18	761 066 718	ADAPTOR PIPE
5052	75	1	18	761 066 308	ADAPTOR PIPE
5062	25-16	1	20	761 066 250	MANIFOLD PB SINGLE
5062	25-20	1	20	761 066 251	MANIFOLD PB SINGLE
5062	25-16	1	20	761 066 252	MANIFOLD PB DOUBLE
5062	25-16	1	20	761 066 253	MANIFOLD PB TRIPLE
5062	25-16	1	20	761 066 254	PB-VERTEILER 4-FOLD
5074	1/4	1	24	761 066 328	DRAIN VALVE WITH PLU
5080	16	10	13	761 066 738	O-RING
5080	20	10	13	761 066 720	O-RING
5080	25	10	13	761 066 721	O-RING
5080	32	10	13	761 066 722	O-RING
5080	40	10	13	761 066 723	O-RING
5080	50	10	13	761 066 724	O-RING
5080	63	10	13	761 066 725	O-RING
5080	75	5	13	761 066 952	O-RING
5080	90	5	13	761 066 953	O-RING
5080	110	5	13	761 066 954	O-RING
5081	16-1	10	14	761 066 980	UNION NUT

CATALOGUE NUMBER	DIMENSION	SP	PAGE	CODE	ARTICLE
5081	20-11/4	10	14	761 066 971	UNION NUT
5081	25-11/2	10	14	761 066 972	UNION NUT
5081	32-2	10	14	761 066 973	UNION NUT
5081	40-21/2	10	14	761 066 974	UNION NUT
5081	50-23/4	10	14	761 066 975	UNION NUT
5081	63-31/2	2	14	761 066 976	UNION NUT
5083	20	1	25	761 066 343	BALL VALVE PVC-C / PB SPIGOT
5083	25	1	25	761 066 344	BALL VALVE PVC-C / PB SPIGOT
5083	32	1	25	761 066 345	BALL VALVE PVC-C / PB SPIGOT
5083	40	1	25	761 066 346	BALL VALVE PVC-C / PB SPIGOT
5083	50	1	25	761 066 347	BALL VALVE PVC-C / PB SPIGOT
5083	63	1	25	761 066 348	BALL VALVE PVC-C / PB SPIGOT
5085	20	2	14	761 065 270	BACKING FLANGE
5085	25	2	14	761 065 271	BACKING FLANGE
5085	32	2	14	761 065 272	BACKING FLANGE
5085	40	2	14	761 065 273	BACKING FLANGE
5085	50	2	14	761 065 274	BACKING FLANGE
5085	63	2	14	761 065 275	BACKING FLANGE
5085	75	2	14	761 065 276	BACKING FLANGE
5085	90	2	14	761 065 277	BACKING FLANGE
5085	110	2	14	761 065 278	BACKING FLANGE
5087	20	5	14	761 066 329	FLANGE GASKET
5087	25	5	14	761 066 330	FLANGE GASKET
5087	32	5	14	761 066 331	FLANGE GASKET
5087	40	5	14	761 066 332	FLANGE GASKET
5087	50	5	14	761 066 333	FLANGE GASKET
5087	63	5	14	761 066 334	FLANGE GASKET
5087	75	1	14	761 066 315	FLANGE GASKET
5087	90	1	14	761 066 316	FLANGE GASKET
5087	110	1	14	761 066 317	FLANGE GASKET
5089	20	1	25	760 000 343	BALL VALVE PP / PB SPIGOT
5089	25	1	25	760 000 344	BALL VALVE PP / PB SPIGOT
5089	32	1	25	760 000 345	BALL VALVE PP / PB SPIGOT
5089	40	1	25	760 000 346	BALL VALVE PP / PB SPIGOT
5089	50	1	25	760 000 347	BALL VALVE PP / PB SPIGOT
5089	63	1	25	760 000 348	BALL VALVE PP / PB SPIGOT
5092		10	28	761 066 731	SUPPORT PLATE
5092		10	28	761 066 732	SUPPORT PLATE
5092		10	28	761 066 733	SUPPORT PLATE
5092		10	28	761 066 734	SUPPORT PLATE
5093		20	28	761 066 311	BASE PLATE
5093		50	28	761 066 741	BASE PLATE
5093		50	28	761 066 735	BASE PLATE
5094	M8-G1/2	20	28	761 066 318	REDUCER
5094	M8-G1/2	20	28	761 066 306	REDUCER
5095		100	28	761 066 307	CAP SCREW
5096	25		24	761 066 325	VALVE BRACKET
5300	32-63	1	29	761 066 792	PIPE CUTTER
5300	75-100	1	29	761 066 834	PIPE CUTTER
5301	32-63	1	30	761 066 793	SPARE BLADES
5301	75-100	1	30	761 066 835	SPARE BLADES
6000	16-110	1	31	761 069 015	ELECTROFUSION CONTROL UNIT 110V
6000	16-110	1	29	761 069 021	ELECTROFUSION CONTROL UNIT 230V
6001	16-110	1	29	761 069 001	WELDING CABLE 230V FOR ELECTROFUSION FITTINGS
6001	16-110	1	31	761 069 011	WELDING CABLE 110V FOR ELECTROFUSION FITTINGS
6005		1	31	761 069 012	PRIMARY CABLE 110V
6005		1	31	761 069 013	PRIMARY CABLE 240V
6006	16-63	2	29	761 066 843	BALL-HEAD SOCKET WRENCH
6006	75-110	2	29	761 066 844	BALL-HEAD SOCKET WRENCH
6007	16-63	5	29	761 066 845	SCREW DRIVER BIT
6007	75-110	5	29	761 066 846	SCREW DRIVER BIT
6200	16	1	8	761 069 200	ELECTROFUSION COUPLER
6200	20	1	8	761 069 201	ELECTROFUSION COUPLER
6200	25	1	8	761 069 202	ELECTROFUSION COUPLER
6200	32	1	8	761 069 203	ELECTROFUSION COUPLER
6200	40	1	8	761 069 204	ELECTROFUSION COUPLER
6200	50	1	8	761 069 205	ELECTROFUSION COUPLER
6200	63	1	8	761 069 206	ELECTROFUSION COUPLER
6200	75	1	8	761 069 265	ELECTROFUSION COUPLER
6200	90	1	8	761 069 266	ELECTROFUSION COUPLER
6200	110	1	8	761 069 267	ELECTROFUSION COUPLER
6201	16	1	8	761 069 207	ELECTROFUSION ADAPTOR
6201	20	1	8	761 069 208	ELECTROFUSION ADAPTOR
6201	25	1	8	761 069 209	ELECTROFUSION ADAPTOR
6201	32	1	8	761 069 210	ELECTROFUSION ADAPTOR
6201	40	1	8	761 069 211	ELECTROFUSION ADAPTOR
6201	50	1	8	761 069 212	ELECTROFUSION ADAPTOR
6201	63	1	8	761 069 213	ELECTROFUSION ADAPTOR
6202	16	1	8	761 069 214	ELECTROFUSION ELBOW 90°
6202	20	1	8	761 069 215	ELECTROFUSION ELBOW 90°
6202	25	1	8	761 069 216	ELECTROFUSION ELBOW 90°
6202	32	1	8	761 069 217	ELECTROFUSION ELBOW 90°
6202	40	1	8	761 069 218	ELECTROFUSION ELBOW 90°
6202	50	1	8	761 069 219	ELECTROFUSION ELBOW 90°
6202	63	1	8	761 069 220	ELECTROFUSION ELBOW 90°
6202	75	1	8	761 069 221	ELECTROFUSION ELBOW 90°
6202	90	1	8	761 069 222	ELECTROFUSION ELBOW 90°
6202	110	1	8	761 069 223	ELECTROFUSION ELBOW 90°
6203	16	1	9	761 069 227	ELECTROFUSION ELBOW 45°
6203	20	1	9	761 069 228	ELECTROFUSION ELBOW 45°
6203	25	1	9	761 069 229	ELECTROFUSION ELBOW 45°
6203	32	1	9	761 069 230	ELECTROFUSION ELBOW 45°
6203	40	1	9	761 069 231	ELECTROFUSION ELBOW 45°
6203	50	1	9	761 069 232	ELECTROFUSION ELBOW 45°
6203	63	1	9	761 069 233	ELECTROFUSION ELBOW 45°
6203	75	1	9	761 069 234	ELECTROFUSION ELBOW 45°
6203	90	1	9	761 069 235	ELECTROFUSION ELBOW 45°
6203	110	1	9	761 069 236	ELECTROFUSION ELBOW 45°
6204	16	1	10	761 069 237	ELECTROFUSION TEE 90° EQUAL
6204	20	1	10	761 069 238	ELECTROFUSION TEE 90° EQUAL

CATALOGUE NUMBER	DIMENSION	SP	PAGE	CODE	ARTICLE
6204	25	1	10	761 069 239	ELECTROFUSION TEE 90° EQUAL
6204	32	1	10	761 069 240	ELECTROFUSION TEE 90° EQUAL
6204	40	1	10	761 069 241	ELECTROFUSION TEE 90° EQUAL
6204	50	1	10	761 069 242	ELECTROFUSION TEE 90° EQUAL
6204	63	1	10	761 069 243	ELECTROFUSION TEE 90° EQUAL
6204	75	1	10	761 069 244	ELECTROFUSION TEE 90° EQUAL
6204	90	1	10	761 069 245	ELECTROFUSION TEE 90° EQUAL
6204	110	1	10	761 069 246	ELECTROFUSION TEE 90° EQUAL
6205	20-16-16	1	10	761 069 249	ELECTROFUSION TEE 90° REDUCED
6205	20-16-20	1	10	761 069 250	ELECTROFUSION TEE 90° REDUCED
6205	25-16-25	1	10	761 069 251	ELECTROFUSION TEE 90° REDUCED
6205	25-20-20	1	10	761 069 256	ELECTROFUSION TEE 90° REDUCED
6205	25-20-25	1	10	761 069 252	ELECTROFUSION TEE 90° REDUCED
6205	25-25-20	1	10	761 069 257	ELECTROFUSION TEE 90° REDUCED
6205	32-20-32	1	10	761 069 253	ELECTROFUSION TEE 90° REDUCED
6205	32-25-25	1	10	761 069 258	ELECTROFUSION TEE 90° REDUCED
6205	32-25-32	1	10	761 069 254	ELECTROFUSION TEE 90° REDUCED
6205	40-20-40	1	10	761 069 259	ELECTROFUSION TEE 90° REDUCED
6205	40-25-40	1	10	761 069 255	ELECTROFUSION TEE 90° REDUCED
6205	40-32-40	1	10	761 069 260	ELECTROFUSION TEE 90° REDUCED
6205	50-25-50	1	10	761 069 261	ELECTROFUSION TEE 90° REDUCED
6205	50-32-50	1	10	761 069 262	ELECTROFUSION TEE 90° REDUCED
6205	63-25-63	1	10	761 069 263	ELECTROFUSION TEE 90° REDUCED
6205	63-40-63	1	10	761 069 264	ELECTROFUSION TEE 90° REDUCED
6206	16	1	11	761 069 270	ELECTROFUSION CAP
6206	20	1	11	761 069 271	ELECTROFUSION CAP
6206	25	1	11	761 069 272	ELECTROFUSION CAP
6206	32	1	11	761 069 273	ELECTROFUSION CAP
6206	40	1	11	761 069 274	ELECTROFUSION CAP
6206	50	1	11	761 069 275	ELECTROFUSION CAP
6206	63	1	11	761 069 276	ELECTROFUSION CAP
6207	20-16	1	11	761 069 277	ELECTROFUSION REDUCER
6207	25-16	1	11	761 069 278	ELECTROFUSION REDUCER
6207	25-20	1	11	761 069 279	ELECTROFUSION REDUCER
6207	32-16	1	11	761 069 457	ELECTROFUSION REDUCER
6207	32-20	1	11	761 069 280	ELECTROFUSION REDUCER
6207	32-25	1	11	761 069 281	ELECTROFUSION REDUCER
6207	40-20	1	11	761 069 458	ELECTROFUSION REDUCER
6207	40-25	1	11	761 069 459	ELECTROFUSION REDUCER
6207	40-32	1	11	761 069 282	ELECTROFUSION REDUCER
6207	50-20	1	11	761 069 460	ELECTROFUSION REDUCER
6207	50-25	1	11	761 069 461	ELECTROFUSION REDUCER
6207	50-32	1	11	761 069 462	ELECTROFUSION REDUCER
6207	50-40	1	11	761 069 283	ELECTROFUSION REDUCER
6207	63-20	1	11	761 069 463	ELECTROFUSION REDUCER
6207	63-25	1	11	761 069 464	ELECTROFUSION REDUCER
6207	63-32	1	11	761 069 284	ELECTROFUSION REDUCER
6207	63-40	1	11	761 069 465	ELECTROFUSION REDUCER
6207	63-50	1	11	761 069 285	ELECTROFUSION REDUCER
6207	75-63	1	11	761 069 286	ELECTROFUSION REDUCER
6207	90-63	1	11	761 069 287	ELECTROFUSION REDUCER
6207	90-75	1	11	761 069 288	ELECTROFUSION REDUCER
6207	110-63	1	11	761 069 289	ELECTROFUSION REDUCER
6207	110-75	1	11	761 069 290	ELECTROFUSION REDUCER
6207	110-90	1	11	761 069 291	ELECTROFUSION REDUCER
6208	20	1	23	761 069 294	VALVE PB WITH DRAIN ELECTROFUSION
6208	25	1	23	761 069 295	VALVE PB WITH DRAIN ELECTROFUSION
6208	32	1	23	761 069 296	VALVE PB WITH DRAIN ELECTROFUSION
6208	40	1	23	761 069 297	VALVE PB WITH DRAIN ELECTROFUSION
6208	50	1	23	761 069 298	VALVE PB WITH DRAIN ELECTROFUSION
6208	63	1	23	761 069 299	VALVE PB WITH DRAIN ELECTROFUSION
6209	63	1	13	761 069 312	FLANGE ADAPTOR WITH GROOVE ELECTROFUSION
6209	75	1	13	761 069 313	FLANGE ADAPTOR WITH GROOVE ELECTROFUSION
6209	90	1	13	761 069 314	FLANGE ADAPTOR WITH GROOVE ELECTROFUSION
6209	110	1	13	761 069 315	FLANGE ADAPTOR WITH GROOVE ELECTROFUSION
6210	63	1	13	761 069 326	FLANGE ADAPTOR FLAT ELECTROFUSION
6210	75	1	13	761 069 327	FLANGE ADAPTOR FLAT ELECTROFUSION
6210	90	1	13	761 069 328	FLANGE ADAPTOR FLAT ELECTROFUSION
6210	110	1	13	761 069 329	FLANGE ADAPTOR FLAT ELECTROFUSION
6211	20	1	23	761 069 330	VALVE PB ELECTROFUSION
6211	25	1	23	761 069 331	VALVE PB ELECTROFUSION
6211	32	1	23	761 069 332	VALVE PB ELECTROFUSION
6211	40	1	23	761 069 333	VALVE PB ELECTROFUSION
6211	50	1	23	761 069 334	VALVE PB ELECTROFUSION
6211	63	1	23	761 069 335	VALVE PB ELECTROFUSION
6212	20	1	23	761 069 342	VALVE PB CONCEALED ELECTROFUSION
6212	25	1	23	761 069 343	VALVE PB CONCEALED ELECTROFUSION
6212	32	1	23	761 069 344	VALVE PB CONCEALED ELECTROFUSION
6214	16-1/2	1	16	761 069 385	ADAPTOR
6214	20-1/2	1	16	761 069 386	ADAPTOR
6214	20-3/4	1	16	761 069 387	ADAPTOR
6214	25-3/4	1	16	761 069 388	ADAPTOR
6214	25-1	1	16	761 069 389	ADAPTOR
6214	32-1	1	16	761 069 390	ADAPTOR
6214	40-11/4	1	16	761 069 391	ADAPTOR
6214	50-11/2	1	16	761 069 392	ADAPTOR
6215	63-2	1	16	761 069 393	ADAPTOR
6215	16-1/2	1	16	761 069 360	ADAPTOR
6215	20-1/2	1	16	761 069 361	ADAPTOR
6215	20-3/4	1	16	761 069 362	ADAPTOR
6215	25-3/4	1	16	761 069 363	ADAPTOR
6215	25-1	1	16	761 069 364	ADAPTOR
6215	32-1	1	16	761 069 365	ADAPTOR
6215	40-11/4	1	16	761 069 366	ADAPTOR
6215	50-11/2	1	16	761 069 367	ADAPTOR
6215	63-2	1	16	761 069 368	ADAPTOR
6216	16-3/4	1	16	761 069 370	ADAPTOR
6216	20-3/4	1	16	761 069 369	ADAPTOR
6216	20-1	1	16	761 069 371	ADAPTOR
6216	25-3/4	1	16	761 069 372	ADAPTOR

CATALOGUE NUMBER	DIMENSION	SP	PAGE	CODE	ARTICLE
6216	25-1	1	16	761 069 373	ADAPTOR
6216	25-1 1/4	1	16	761 069 374	ADAPTOR
6216	32-1	1	16	761 069 375	ADAPTOR
6216	32-1 1/4	1	16	761 069 377	ADAPTOR
6216	32-1 1/2	1	16	761 069 376	ADAPTOR
6216	40-1 1/4	1	16	761 069 378	ADAPTOR
6216	40-1 1/2	1	16	761 069 379	ADAPTOR
6216	40-2	1	16	761 069 381	ADAPTOR
6216	50-13/4	1	16	761 069 384	ADAPTOR
6216	50-21/4	1	16	761 069 383	ADAPTOR
6216	63-23/8	1	16	761 069 394	ADAPTOR
6216	63-23/4	1	16	761 069 395	ADAPTOR
6217	16-1/2	1	17	761 069 380	ADAPTOR
6217	20-3/4	1	17	761 069 382	ADAPTOR
6218	20-15	1	17	761 069 469	ADAPTOR
6218	25-20	1	17	761 069 470	ADAPTOR
6218	32-25	1	17	761 069 471	ADAPTOR
6220	16-1/2	1	12	761 069 400	UNION
6220	20-1/2	1	12	761 069 401	UNION
6220	25-3/4	1	12	761 069 402	UNION
6220	32-1	1	12	761 069 403	UNION
6220	40-1 1/4	1	12	761 069 404	UNION
6220	50-1 1/2	1	12	761 069 405	UNION
6220	63-2	1	12	761 069 406	UNION
6221	16-1/2	1	12	761 069 407	UNION
6221	20-1/2	1	12	761 069 408	UNION
6221	25-3/4	1	12	761 069 409	UNION
6221	32-1	1	12	761 069 410	UNION
6221	40-1 1/4	1	12	761 069 411	UNION
6221	50-1 1/2	1	12	761 069 412	UNION
6221	63-2	1	12	761 069 413	UNION
6222	16	1	9	761 069 434	ELBOW 90° SOCKET-SPIGOT
6222	20	1	9	761 069 435	ELBOW 90° SOCKET-SPIGOT
6222	25	1	9	761 069 436	ELBOW 90° SOCKET-SPIGOT
6222	32	1	9	761 069 437	ELBOW 90° SOCKET-SPIGOT
6222	40	1	9	761 069 438	ELBOW 90° SOCKET-SPIGOT
6222	50	1	9	761 069 439	ELBOW 90° SOCKET-SPIGOT
6222	63	1	9	761 069 440	ELBOW 90° SOCKET-SPIGOT
6223	16	1	9	761 069 447	ELBOW 45° SOCKET-SPIGOT
6223	20	1	9	761 069 448	ELBOW 45° SOCKET-SPIGOT
6223	25	1	9	761 069 449	ELBOW 45° SOCKET-SPIGOT
6223	32	1	9	761 069 450	ELBOW 45° SOCKET-SPIGOT
6223	40	1	9	761 069 451	ELBOW 45° SOCKET-SPIGOT
6223	50	1	9	761 069 452	ELBOW 45° SOCKET-SPIGOT
6223	63	1	9	761 069 453	ELBOW 45° SOCKET-SPIGOT
6224	25-3/4-25	1	10	761 069 430	ADAPTOR 90°
6224	32-1-32	1	10	761 069 431	ADAPTOR 90°
6225	16-1/2	1	12	761 069 475	UNION
6225	20-1/2	1	12	761 069 476	UNION
6225	25-3/4	1	12	761 069 477	UNION
6225	32-1	1	12	761 069 478	UNION
6225	40-1 1/4	1	12	761 069 479	UNION
6225	50-1 1/2	1	12	761 069 480	UNION
6225	63-2	1	12	761 069 481	UNION
6226	16-1/2	1	12	761 069 482	UNION
6226	20-1/2	1	12	761 069 483	UNION
6226	25-3/4	1	12	761 069 484	UNION
6226	32-1	1	12	761 069 485	UNION
6226	40-1 1/4	1	12	761 069 486	UNION
6226	50-1 1/2	1	12	761 069 487	UNION
6226	63-2	1	12	761 069 488	UNION
6230	1/2	10	15	761 069 420	SEAL
6230	3/4	10	15	761 069 421	SEAL
6230	1	10	15	761 069 422	SEAL
6230	1 1/4	10	15	761 069 423	SEAL
6230	1 1/2	10	15	761 069 424	SEAL
6230	2	10	15	761 069 425	SEAL
6230	2 1/4	10	15	761 069 426	SEAL
6230	2 3/4	10	15	761 069 427	SEAL
6230		1	30	799 298 023	SPECIAL CLEANER

Numerical Product Range

Arranged according to code

CATALOGUE NUMBER	DIMENSION	SP	PAGE	CODE	ARTICLE
5089	20	1	25	760 000 343	BALL VALVE PP / PB SPIGOT
5089	25	1	25	760 000 344	BALL VALVE PP / PB SPIGOT
5089	32	1	25	760 000 345	BALL VALVE PP / PB SPIGOT
5089	40	1	25	760 000 346	BALL VALVE PP / PB SPIGOT
5089	50	1	25	760 000 347	BALL VALVE PP / PB SPIGOT
5089	63	1	25	760 000 348	BALL VALVE PP / PB SPIGOT
3301	16-1/2	5	18	760 853 104	ADAPTOR
3301	16-3/4	5	18	760 853 105	ADAPTOR
3310	16-1/2	5	18	760 853 107	ADAPTOR
3310	16-3/4	5	18	760 853 108	ADAPTOR
3293	3/4	10	22	760 853 128	MOUNTING BRACKET G 1/2
3310	20-3/4	5	18	760 853 138	ADAPTOR
3301	20-3/4	5	18	760 853 153	ADAPTOR
3292	3/4	10	22	760 853 187	MOUNTING BRACKET M8
3301	20-1/2	5	18	760 853 194	ADAPTOR
3310	20-1/2	5	18	760 853 195	ADAPTOR
3908	16-25	1	29	760 853 279	PIPE SHEARS
3930	200	100	7	760 853 283	PIPE BINDER
3930	300	100	7	760 853 284	PIPE BINDER
3310	25-3/4	2	18	760 853 745	ADAPTOR
3419	1	1	24	760 853 786	CAP CHROMIUM PLATED
3301	25-3/4	2	18	760 854 735	ADAPTOR
3301	32-1	2	18	760 854 736	ADAPTOR
3301	40-11/4	1	18	760 854 737	ADAPTOR
3301	50-11/2	1	18	760 854 738	ADAPTOR
3301	63-2	1	18	760 854 738	ADAPTOR
3310	32-1	2	18	760 854 746	ADAPTOR
3310	40-11/4	1	18	760 854 747	ADAPTOR
3310	50-11/2	1	18	760 854 748	ADAPTOR
3310	63-2	1	18	760 854 749	ADAPTOR
3929	40 X3M	10X3 M	7	760 854 928	CARRIER
3929	50 X3M	10X3 M	7	760 854 929	CARRIER
3929	63 X3M	10X3 M	7	760 854 930	CARRIER
3930	430	100	7	760 854 984	PIPE BINDER
3929	75 X3M	10X3 M	7	760 854 985	CARRIER
3286	3/4	10	22	760 856 212	MOUNTING BRACKET M8
3931	16	10X3 M	7	760 856 602	CLIP-CARRIER
3931	20	10X3 M	7	760 856 603	CLIP-CARRIER
3931	25	10X3 M	7	760 856 604	CLIP-CARRIER
3931	32	10X3 M	7	760 856 605	CLIP-CARRIER
3714	16X2,2	9X5,8 M	6	760 856 606	PIPE PB
3714	20X2,8	9X5,8 M	6	760 856 607	PIPE PB
3714	25X2,3	10X5,8 M	6	760 856 608	PIPE PB
3714	32X2,9	10X5,8 M	6	760 856 609	PIPE PB
3714	40X3,7	10X5,8 M	6	760 856 610	PIPE PB
3714	50X4,6	7X5,8 M	6	760 856 611	PIPE PB
3714	63X5,8	7X5,8 M	6	760 856 612	PIPE PB
3714	75X6,8	1X5,8 M	6	760 856 613	PIPE PB
3714	90X8,2	1X5,8 M	6	760 856 614	PIPE PB
3714	110X10,0	1X5,8 M	6	760 856 615	PIPE PB
3301	25-1	2	18	760 869 982	ADAPTOR
3310	25-1	2	18	760 869 983	ADAPTOR
3310	75-21/2	1	18	760 869 992	ADAPTOR
5085	20	2	14	761 065 270	BACKING FLANGE
5085	25	2	14	761 065 271	BACKING FLANGE
5085	32	2	14	761 065 272	BACKING FLANGE
5085	40	2	14	761 065 273	BACKING FLANGE
5085	50	2	14	761 065 274	BACKING FLANGE
5085	63	2	14	761 065 275	BACKING FLANGE
5085	75	2	14	761 065 276	BACKING FLANGE
5085	90	2	14	761 065 277	BACKING FLANGE
5085	110	2	14	761 065 278	BACKING FLANGE
5062	25-16	1	20	761 066 250	MANIFOLD PB SINGLE
5062	25-20	1	20	761 066 251	MANIFOLD PB SINGLE
5062	25-16	1	20	761 066 252	MANIFOLD PB DOUBLE
5062	25-16	1	20	761 066 253	MANIFOLD PB TRIPLE
5062	25-16	1	20	761 066 254	PB-VERTEILER 4-FOLD
5094	M8-G 1/2	20	28	761 066 306	REDUCER
5095		100	28	761 066 307	CAP SCREW
5052	75	1	18	761 066 308	ADAPTOR PIPE
5093		20	28	761 066 311	BASE PLATE
5087	75	1	14	761 066 315	FLANGE GASKET
5087	90	1	14	761 066 316	FLANGE GASKET
5087	110	1	14	761 066 317	FLANGE GASKET
5094	M8-G 1/2	20	28	761 066 318	REDUCER
5096	25	1	24	761 066 325	VALVE BRACKET
5074	1/4	1	24	761 066 328	DRAIN VALVE WITH PLU
5087	20	5	14	761 066 329	FLANGE GASKET
5087	25	5	14	761 066 330	FLANGE GASKET
5087	32	5	14	761 066 331	FLANGE GASKET
5087	40	5	14	761 066 332	FLANGE GASKET
5087	50	5	14	761 066 333	FLANGE GASKET
5087	63	5	14	761 066 334	FLANGE GASKET
3420	20-32	1	26	761 066 335	SLIDE TO VALVE PB
3420	40-63	1	26	761 066 336	SLIDE TO VALVE PB
5083	20	1	25	761 066 343	BALL VALVE PVC-C / PB SPIGOT
5083	25	1	25	761 066 344	BALL VALVE PVC-C / PB SPIGOT
5083	32	1	25	761 066 345	BALL VALVE PVC-C / PB SPIGOT
5083	40	1	25	761 066 346	BALL VALVE PVC-C / PB SPIGOT
5083	50	1	25	761 066 347	BALL VALVE PVC-C / PB SPIGOT

CATALOGUE NUMBER	DIMENSION	SP	PAGE	CODE	ARTICLE
5083	63	1	25	761 066 348	BALL VALVE PVC-C / PB SPIGOT
5050	16	10	21	761 066 650	CAP
5050	20	10	21	761 066 651	CAP
5050	25	10	21	761 066 652	CAP
5050	32	10	21	761 066 653	CAP
5050	40	10	21	761 066 654	CAP
5050	50	10	21	761 066 655	CAP
5050	63	5	21	761 066 656	CAP
5040	16	10	21	761 066 660	SOCKET
5040	20	10	21	761 066 661	SOCKET
5040	25	10	21	761 066 662	SOCKET
5040	32	10	21	761 066 663	SOCKET
5040	40	10	21	761 066 664	SOCKET
5040	50	10	21	761 066 665	SOCKET
5040	63	2	21	761 066 666	SOCKET
5040	75	2	21	761 066 667	SOCKET
5040	90	2	21	761 066 668	SOCKET
5040	110	2	21	761 066 669	SOCKET
5052	32	5	18	761 066 712	ADAPTOR PIPE
5052	40	5	18	761 066 714	ADAPTOR PIPE
5052	50	3	18	761 066 716	ADAPTOR PIPE
5052	63	3	18	761 066 718	ADAPTOR PIPE
5080	20	10	13	761 066 720	O-RING
5080	25	10	13	761 066 721	O-RING
5080	32	10	13	761 066 722	O-RING
5080	40	10	13	761 066 723	O-RING
5080	50	10	13	761 066 724	O-RING
5080	63	10	13	761 066 725	O-RING
5092		10	28	761 066 731	SUPPORT PLATE
5092		10	28	761 066 732	SUPPORT PLATE
5092		10	28	761 066 733	SUPPORT PLATE
5092		10	28	761 066 734	SUPPORT PLATE
5093		50	28	761 066 735	BASE PLATE
5080	16	10	13	761 066 738	O-RING
5093		50	28	761 066 741	BASE PLATE
5300	32-63	1	29	761 066 792	PIPE CUTTER
5301	32-63	1	30	761 066 793	SPARE BLADES
5300	75-100	1	29	761 066 834	PIPE CUTTER
5301	75-100	1	30	761 066 835	SPARE BLADES
6006	16-63	2	29	761 066 843	BALL-HEAD SOCKET WRENCH
6006	75-110	2	29	761 066 844	BALL-HEAD SOCKET WRENCH
6007	16-63	5	29	761 066 845	SCREW DRIVER BIT
6007	75-110	5	29	761 066 846	SCREW DRIVER BIT
5051	25	10	21	761 066 938	PLUG
5080	75	5	13	761 066 952	O-RING
5080	90	5	13	761 066 953	O-RING
5080	110	5	13	761 066 954	O-RING
5081	20-11/4	10	14	761 066 971	UNION NUT
5081	25-11/2	10	14	761 066 972	UNION NUT
5081	32-2	10	14	761 066 973	UNION NUT
5081	40-21/2	10	14	761 066 974	UNION NUT
5081	50-23/4	10	14	761 066 975	UNION NUT
3417	25/32	1	26	761 066 979	SLEEVE VALVE PB
5081	16-1	10	14	761 066 980	UNION NUT
6001	16-110	1	29	761 069 001	WELDING CABLE 230V FOR ELECTROFUSION FITTINGS
6001	16-110	1	31	761 069 011	WELDING CABLE 110V FOR ELECTROFUSION FITTINGS
6005		1	31	761 069 012	PRIMARY CABLE 110V
6005		1	31	761 069 013	PRIMARY CABLE 240V
6000	16-110	1	31	761 069 015	ELECTROFUSION CONTROL UNIT 110V
6000	16-110	1	29	761 069 021	ELECTROFUSION CONTROL UNIT 230V
6200	16	1	8	761 069 200	ELECTROFUSION COUPLER
6200	20	1	8	761 069 201	ELECTROFUSION COUPLER
6200	25	1	8	761 069 202	ELECTROFUSION COUPLER
6200	32	1	8	761 069 203	ELECTROFUSION COUPLER
6200	40	1	8	761 069 204	ELECTROFUSION COUPLER
6200	50	1	8	761 069 205	ELECTROFUSION COUPLER
6200	63	1	8	761 069 206	ELECTROFUSION COUPLER
6201	16	1	8	761 069 207	ELECTROFUSION ADAPTOR
6201	20	1	8	761 069 208	ELECTROFUSION ADAPTOR
6201	25	1	8	761 069 209	ELECTROFUSION ADAPTOR
6201	32	1	8	761 069 210	ELECTROFUSION ADAPTOR
6201	40	1	8	761 069 211	ELECTROFUSION ADAPTOR
6201	50	1	8	761 069 212	ELECTROFUSION ADAPTOR
6201	63	1	8	761 069 213	ELECTROFUSION ADAPTOR
6202	16	1	8	761 069 214	ELECTROFUSION ELBOW 90°
6202	20	1	8	761 069 215	ELECTROFUSION ELBOW 90°
6202	25	1	8	761 069 216	ELECTROFUSION ELBOW 90°
6202	32	1	8	761 069 217	ELECTROFUSION ELBOW 90°
6202	40	1	8	761 069 218	ELECTROFUSION ELBOW 90°
6202	50	1	8	761 069 219	ELECTROFUSION ELBOW 90°
6202	63	1	8	761 069 220	ELECTROFUSION ELBOW 90°
6202	75	1	8	761 069 221	ELECTROFUSION ELBOW 90°
6202	90	1	8	761 069 222	ELECTROFUSION ELBOW 90°
6202	110	1	8	761 069 223	ELECTROFUSION ELBOW 90°
6203	16	1	9	761 069 227	ELECTROFUSION ELBOW 45°
6203	20	1	9	761 069 228	ELECTROFUSION ELBOW 45°
6203	25	1	9	761 069 229	ELECTROFUSION ELBOW 45°
6203	32	1	9	761 069 230	ELECTROFUSION ELBOW 45°
6203	40	1	9	761 069 231	ELECTROFUSION ELBOW 45°
6203	50	1	9	761 069 232	ELECTROFUSION ELBOW 45°
6203	63	1	9	761 069 233	ELECTROFUSION ELBOW 45°
6203	75	1	9	761 069 234	ELECTROFUSION ELBOW 45°
6203	90	1	9	761 069 235	ELECTROFUSION ELBOW 45°
6203	110	1	9	761 069 236	ELECTROFUSION ELBOW 45°
6204	16	1	10	761 069 237	ELECTROFUSION TEE 90° EQUAL
6204	20	1	10	761 069 238	ELECTROFUSION TEE 90° EQUAL
6204	25	1	10	761 069 239	ELECTROFUSION TEE 90° EQUAL
6204	32	1	10	761 069 240	ELECTROFUSION TEE 90° EQUAL
6204	40	1	10	761 069 241	ELECTROFUSION TEE 90° EQUAL
6204	50	1	10	761 069 242	ELECTROFUSION TEE 90° EQUAL

CATALOGUE NUMBER	DIMENSION	SP	PAGE	CODE	ARTICLE
6204	63	1	10	761 069 243	ELECTROFUSION TEE 90° EQUAL
6204	75	1	10	761 069 244	ELECTROFUSION TEE 90° EQUAL
6204	90	1	10	761 069 245	ELECTROFUSION TEE 90° EQUAL
6204	110	1	10	761 069 246	ELECTROFUSION TEE 90° EQUAL
6205	20-16-16	1	10	761 069 249	ELECTROFUSION TEE 90° REDUCED
6205	20-16-20	1	10	761 069 250	ELECTROFUSION TEE 90° REDUCED
6205	25-16-25	1	10	761 069 251	ELECTROFUSION TEE 90° REDUCED
6205	25-20-25	1	10	761 069 252	ELECTROFUSION TEE 90° REDUCED
6205	32-20-32	1	10	761 069 253	ELECTROFUSION TEE 90° REDUCED
6205	32-25-32	1	10	761 069 254	ELECTROFUSION TEE 90° REDUCED
6205	40-25-40	1	10	761 069 255	ELECTROFUSION TEE 90° REDUCED
6205	25-20-20	1	10	761 069 256	ELECTROFUSION TEE 90° REDUCED
6205	25-25-20	1	10	761 069 257	ELECTROFUSION TEE 90° REDUCED
6205	32-25-25	1	10	761 069 258	ELECTROFUSION TEE 90° REDUCED
6205	40-20-40	1	10	761 069 259	ELECTROFUSION TEE 90° REDUCED
6205	40-32-40	1	10	761 069 260	ELECTROFUSION TEE 90° REDUCED
6205	50-25-50	1	10	761 069 261	ELECTROFUSION TEE 90° REDUCED
6205	50-32-50	1	10	761 069 262	ELECTROFUSION TEE 90° REDUCED
6205	63-25-63	1	10	761 069 263	ELECTROFUSION TEE 90° REDUCED
6205	63-40-63	1	10	761 069 264	ELECTROFUSION TEE 90° REDUCED
6200	75	1	8	761 069 265	ELECTROFUSION COUPLER
6200	90	1	8	761 069 266	ELECTROFUSION COUPLER
6200	110	1	8	761 069 267	ELECTROFUSION COUPLER
6206	16	1	11	761 069 270	ELECTROFUSION CAP
6206	20	1	11	761 069 271	ELECTROFUSION CAP
6206	25	1	11	761 069 272	ELECTROFUSION CAP
6206	32	1	11	761 069 273	ELECTROFUSION CAP
6206	40	1	11	761 069 274	ELECTROFUSION CAP
6206	50	1	11	761 069 275	ELECTROFUSION CAP
6206	63	1	11	761 069 276	ELECTROFUSION CAP
6207	20-16	1	11	761 069 277	ELECTROFUSION REDUCER
6207	25-16	1	11	761 069 278	ELECTROFUSION REDUCER
6207	25-20	1	11	761 069 279	ELECTROFUSION REDUCER
6207	32-20	1	11	761 069 280	ELECTROFUSION REDUCER
6207	32-25	1	11	761 069 281	ELECTROFUSION REDUCER
6207	40-32	1	11	761 069 282	ELECTROFUSION REDUCER
6207	50-40	1	11	761 069 283	ELECTROFUSION REDUCER
6207	63-32	1	11	761 069 284	ELECTROFUSION REDUCER
6207	63-50	1	11	761 069 285	ELECTROFUSION REDUCER
6207	75-63	1	11	761 069 286	ELECTROFUSION REDUCER
6207	90-63	1	11	761 069 287	ELECTROFUSION REDUCER
6207	90-75	1	11	761 069 288	ELECTROFUSION REDUCER
6207	110-63	1	11	761 069 289	ELECTROFUSION REDUCER
6207	110-75	1	11	761 069 290	ELECTROFUSION REDUCER
6207	110-90	1	11	761 069 291	ELECTROFUSION REDUCER
6208	20	1	23	761 069 294	VALVE PB WITH DRAIN ELECTROFUSION
6208	25	1	23	761 069 295	VALVE PB WITH DRAIN ELECTROFUSION
6208	32	1	23	761 069 296	VALVE PB WITH DRAIN ELECTROFUSION
6208	40	1	23	761 069 297	VALVE PB WITH DRAIN ELECTROFUSION
6208	50	1	23	761 069 298	VALVE PB WITH DRAIN ELECTROFUSION
6208	63	1	23	761 069 299	VALVE PB WITH DRAIN ELECTROFUSION
6209	63	1	13	761 069 312	FLANGE ADAPTOR WITH GROOVE ELECTROFUSION
6209	75	1	13	761 069 313	FLANGE ADAPTOR WITH GROOVE ELECTROFUSION
6209	90	1	13	761 069 314	FLANGE ADAPTOR WITH GROOVE ELECTROFUSION
6209	110	1	13	761 069 315	FLANGE ADAPTOR WITH GROOVE ELECTROFUSION
6210	63	1	13	761 069 326	FLANGE ADAPTOR FLAT ELECTROFUSION
6210	75	1	13	761 069 327	FLANGE ADAPTOR FLAT ELECTROFUSION
6210	90	1	13	761 069 328	FLANGE ADAPTOR FLAT ELECTROFUSION
6210	110	1	13	761 069 329	FLANGE ADAPTOR FLAT ELECTROFUSION
6211	20	1	23	761 069 330	VALVE PB ELECTROFUSION
6211	25	1	23	761 069 331	VALVE PB ELECTROFUSION
6211	32	1	23	761 069 332	VALVE PB ELECTROFUSION
6211	40	1	23	761 069 333	VALVE PB ELECTROFUSION
6211	50	1	23	761 069 334	VALVE PB ELECTROFUSION
6211	63	1	23	761 069 335	VALVE PB ELECTROFUSION
6212	20	1	23	761 069 342	VALVE PB CONCEALED ELECTROFUSION
6212	25	1	23	761 069 343	VALVE PB CONCEALED ELECTROFUSION
6212	32	1	23	761 069 344	VALVE PB CONCEALED ELECTROFUSION
6215	16-1/2	1	16	761 069 360	ADAPTOR
6215	20-1/2	1	16	761 069 361	ADAPTOR
6215	20-3/4	1	16	761 069 362	ADAPTOR
6215	25-3/4	1	16	761 069 363	ADAPTOR
6215	25-1	1	16	761 069 364	ADAPTOR
6215	32-1	1	16	761 069 365	ADAPTOR
6215	40-11/4	1	16	761 069 366	ADAPTOR
6215	50-11/2	1	16	761 069 367	ADAPTOR
6215	63-2	1	16	761 069 368	ADAPTOR
6216	20-3/4	1	16	761 069 369	ADAPTOR
6216	16-3/4	1	16	761 069 370	ADAPTOR
6216	20-1	1	16	761 069 371	ADAPTOR
6216	25-3/4	1	16	761 069 372	ADAPTOR
6216	25-1	1	16	761 069 373	ADAPTOR
6216	25-11/4	1	16	761 069 374	ADAPTOR
6216	32-1	1	16	761 069 375	ADAPTOR
6216	32-11/2	1	16	761 069 376	ADAPTOR
6216	32-11/4	1	16	761 069 377	ADAPTOR
6216	40-11/4	1	16	761 069 378	ADAPTOR
6216	40-11/2	1	16	761 069 379	ADAPTOR
6217	16-1/2	1	17	761 069 380	ADAPTOR
6216	40-2	1	16	761 069 381	ADAPTOR
6217	20-3/4	1	17	761 069 382	ADAPTOR
6216	50-21/4	1	16	761 069 383	ADAPTOR
6216	50-13/4	1	16	761 069 384	ADAPTOR
6214	16-1/2	1	16	761 069 385	ADAPTOR
6214	20-1/2	1	16	761 069 386	ADAPTOR
6214	20-3/4	1	16	761 069 387	ADAPTOR
6214	25-3/4	1	16	761 069 388	ADAPTOR
6214	25-1	1	16	761 069 389	ADAPTOR
6214	32-1	1	16	761 069 390	ADAPTOR
6214	40-11/4	1	16	761 069 391	ADAPTOR

CATALOGUE NUMBER	DIMENSION	SP	PAGE	CODE	ARTICLE
6214	50-11/2	1	16	761 069 392	ADAPTOR
6214	63-2	1	16	761 069 393	ADAPTOR
6216	63-23/8	1	16	761 069 394	ADAPTOR
6216	63-23/4	1	16	761 069 395	ADAPTOR
6220	16-1/2	1	12	761 069 400	UNION
6220	20-1/2	1	12	761 069 401	UNION
6220	25-3/4	1	12	761 069 402	UNION
6220	32-1	1	12	761 069 403	UNION
6220	40-11/4	1	12	761 069 404	UNION
6220	50-11/2	1	12	761 069 405	UNION
6220	63-2	1	12	761 069 406	UNION
6221	16-1/2	1	12	761 069 407	UNION
6221	20-1/2	1	12	761 069 408	UNION
6221	25-3/4	1	12	761 069 409	UNION
6221	32-1	1	12	761 069 410	UNION
6221	40-11/4	1	12	761 069 411	UNION
6221	50-11/2	1	12	761 069 412	UNION
6221	63-2	1	12	761 069 413	UNION
6230	1/2	10	15	761 069 420	SEAL
6230	3/4	10	15	761 069 421	SEAL
6230	1	10	15	761 069 422	SEAL
6230	11/4	10	15	761 069 423	SEAL
6230	11/2	10	15	761 069 424	SEAL
6230	2	10	15	761 069 425	SEAL
6230	21/4	10	15	761 069 426	SEAL
6230	23/4	10	15	761 069 427	SEAL
6224	25-3/4-25	1	10	761 069 430	ADAPTOR 90°
6224	32-1-32	1	10	761 069 431	ADAPTOR 90°
6222	16	1	9	761 069 434	ELBOW 90° SOCKET-SPIGOT
6222	20	1	9	761 069 435	ELBOW 90° SOCKET-SPIGOT
6222	25	1	9	761 069 436	ELBOW 90° SOCKET-SPIGOT
6222	32	1	9	761 069 437	ELBOW 90° SOCKET-SPIGOT
6222	40	1	9	761 069 438	ELBOW 90° SOCKET-SPIGOT
6222	50	1	9	761 069 439	ELBOW 90° SOCKET-SPIGOT
6222	63	1	9	761 069 440	ELBOW 90° SOCKET-SPIGOT
6223	16	1	9	761 069 447	ELBOW 45° SOCKET-SPIGOT
6223	20	1	9	761 069 448	ELBOW 45° SOCKET-SPIGOT
6223	25	1	9	761 069 449	ELBOW 45° SOCKET-SPIGOT
6223	32	1	9	761 069 450	ELBOW 45° SOCKET-SPIGOT
6223	40	1	9	761 069 451	ELBOW 45° SOCKET-SPIGOT
6223	50	1	9	761 069 452	ELBOW 45° SOCKET-SPIGOT
6223	63	1	9	761 069 453	ELBOW 45° SOCKET-SPIGOT
6207	32-16	1	11	761 069 457	ELECTROFUSION REDUCER
6207	40-20	1	11	761 069 458	ELECTROFUSION REDUCER
6207	40-25	1	11	761 069 459	ELECTROFUSION REDUCER
6207	50-20	1	11	761 069 460	ELECTROFUSION REDUCER
6207	50-25	1	11	761 069 461	ELECTROFUSION REDUCER
6207	50-32	1	11	761 069 462	ELECTROFUSION REDUCER
6207	63-20	1	11	761 069 463	ELECTROFUSION REDUCER
6207	63-25	1	11	761 069 464	ELECTROFUSION REDUCER
6207	63-40	1	11	761 069 465	ELECTROFUSION REDUCER
6218	20-15	1	17	761 069 469	ADAPTOR
6218	25-20	1	17	761 069 470	ADAPTOR
6218	32-25	1	17	761 069 471	ADAPTOR
6225	16-1/2	1	12	761 069 475	UNION
6225	20-1/2	1	12	761 069 476	UNION
6225	25-3/4	1	12	761 069 477	UNION
6225	32-1	1	12	761 069 478	UNION
6225	40-11/4	1	12	761 069 479	UNION
6225	50-11/2	1	12	761 069 480	UNION
6225	63-2	1	12	761 069 481	UNION
6226	16-1/2	1	12	761 069 482	UNION
6226	20-1/2	1	12	761 069 483	UNION
6226	25-3/4	1	12	761 069 484	UNION
6226	32-1	1	12	761 069 485	UNION
6226	40-11/4	1	12	761 069 486	UNION
6226	50-11/2	1	12	761 069 487	UNION
6226	63-2	1	12	761 069 488	UNION
		1	30	799 298 023	SPECIAL CLEANER

General Condition of Supply of Georg Fischer Piping Systems Limited, Schaffhausen

1 General

- 1.1 These General Conditions shall apply to all Products supplied by George Fischer to the Purchaser.
They shall also apply to all future business even when no express reference is made to them.
- 1.2 Any deviating or supplementary conditions especially Purchaser's general conditions of purchase and verbal agreements shall only be applicable if accepted in writing by George Fischer.
- 1.3 The written form shall be deemed to be fulfilled by all forms of transmission, evidenced in the form of text, such as telefax, e-mail, etc.

2 Tenders

Tenders shall only be binding if they contain a specifically stated period for a acceptance.

3 Scope of Delivery

- 3.1 George Fischer's product range is subject to change.
- 3.2 The confirmation of order shall govern the scope and execution of the contract.

4 Data and Documents

- 4.1 Technical documents such as drawings descriptions illustrations and data on dimensions performance and weight as well as the reference to standards are for information purposes only. They are not warranted characteristics and are subject to change.
- 4.2 All technical documents shall remain the exclusive property of George Fischer and may only be used for the agreed purposes or as George Fischer may consent.

5 Confidentiality, Protection of Personal Data

- 5.1 Each party shall keep in strict confidence all commercial or technical information relating to the business of the other party, of which it has gained knowledge in the course of its dealing with the other party. Such information shall neither be disclosed to third parties nor used for other purposes than those for which the information has been supplied.
- 5.2 In the context of the contractual relation with the Purchaser personal data may be processed. The Purchaser agrees to the disclosure of said data to third parties such as foreign subcontractors and suppliers etc. .

6 Local Laws and Regulations, Export Controls

- 6.1 The Purchaser shall bring to the attention of George Fischer all local laws and regulations at the place of destination which bear connection with the execution of the contract and the adherence to relevant safety regulations and approval procedures.
- 6.2 In case of re-exports, Purchaser shall be responsible for compliance with pertinent export control regulations.

7 Price

- 7.1 Unless agreed otherwise, the prices shall be deemed quoted net ex works (according to Incoterms of the ICC, latest version) including standard packing. All supplementary costs such as the cost of carriage insurance export and import licences etc. shall be borne by the Purchaser. The Purchaser shall also bear the costs of all taxes fees duties etc. connected with the contract.
- 7.2 If the costs of packing, carriage, insurance, fees and other supplementary costs are included in the tender price or contract price or are referred to specifically in the tender or confirmation of order, George Fischer reserve the right to revise their prices accordingly should any change occur in the relevant tariffs.

8 Terms of Payment

- 8.1 The Purchaser shall make payment in the manner agreed by the parties to the George Fischer works conducting the a count without any deductions such as discounts, costs, taxes or dues.
- 8.2 The Purchaser may only withhold or off-set payments due against counter claims which are either expressly acknowledged by George Fischer or finally awarded to the Purchaser. In particular, payment shall still be made when unessential items are still outstanding provided, however, that the Products already delivered are not rendered unusable as a result.

9 Retention of Title

- 9.1 The Products shall remain the property of George Fischer until the Purchaser shall have settled all claims, present and future, which George Fischer may have against him.
- 9.2 Should the Purchaser sell Products to which title is reserved, in the ordinary course of business, he shall hereby be deemed to have tacitly assigned to George Fischer the proceeds deriving from their sale together with all collateral rights, securities and reservations of title until all claims held by George Fischer shall have been settled. Until revoked by George Fischer, this assignment shall not preclude Purchaser's right to collect the assigned receivables.
- 9.3 To the extent the value of the Products to which title is reserved together with collateral securities should exceed George Fischer's claims against the Purchaser by more than 20%, George Fischer shall re-assign the above proceeds to Purchaser at his request.

10 Delivery

- 10.1 The term of delivery shall commence as soon as the contract has been entered into, all official formalities such as import and payment permits have been obtained and all essential technical points have been settled. The term of delivery shall be deemed duly observed when, upon its expiry, the Products are ready for despatch.
- 10.2 Delivery is subject to the following conditions, i.e. the term of delivery shall be reasonably extended:
 - a) if George Fischer are not supplied in time with the information necessary for the execution of the contract or if subsequent changes causing delays are made by the Purchaser.
 - b) if George Fischer are prevented from performing the contract by force majeure. Force majeure shall equally be deemed to be any unforeseeable event beyond George Fischer's control which renders George Fischer's performance commercially impractical or impossible, such as delayed or defective supplies from sub contractors labour disputes, governmental orders or regulations, shortages in materials or energy, serious disturbances in George Fischer's works, such as the total or partial destruction of plant and equipment or the breakdown of essential facilities, serious disruptions in transport facilities, e.g. impassable roads.
Should the effect of force majeure exceed a period of six months, either party may cancel the contract forthwith.
George Fischer shall not be liable for any damage or loss of any kind whatsoever resulting therefrom, any suspension or cancellation being without prejudice to George Fischer's right to re over all sums due in respect of consignments delivered and costs incurred to date.
 - c) if the Purchaser is in delay with the fulfilment of his obligations under the contract, in particular, if he does not adhere to the agreed conditions of payment or if he has failed to timely provide the agreed securities.
- 10.3 If for reasons attributable to George Fischer the agreed term of delivery or a reasonable extension thereof is exceeded, George Fischer shall not be deemed in default until the Purchaser has granted to George Fischer in writing a reasonable extension thereof of not less than one month which equally is not met.
The Purchaser shall then be entitled to the remedies provided at law, it being however understood that, subject to limitations of Art. 16, damage claims shall be limited to max. 10% of the price of the delayed delivery.
- 10.4 Part shipments shall be allowed and George Fischer shall be entitled to invoice for such deliveries.
- 10.5 If the Purchaser fails to take delivery within a reasonable time of Products notified as ready for despatch, George Fischer shall be entitled to store the Products at the Purchaser's expense and risk and to invoice them as delivered. If Purchaser fails to effect payment, George Fischer shall be entitled to dispose of the Products.

- 10.6 Should Purchaser cancel an order without justification and should George Fischer not insist on the performance of the contract, George Fischer shall be entitled to damages in the amount of 10% of the contract price, unless George Fischer can prove higher damages.

11 Packing

If the Products are provided with additional packing over and above the standard packing, such packing shall be invoiced separately and be non-returnable.

12 Passing of Risk

- 12.1 The risk in the Products shall pass to the Purchaser as soon as they have left George Fischer's works (EX WORKS, Incoterms ICC, latest version), even if delivery is made carriage-paid, under similar clauses or including installation or when carriage is organized and managed by George Fischer.
- 12.2 If delivery is delayed for reasons beyond George Fischer's control, the risk shall pass to the Purchaser when he is notified that the Products are ready for despatch.

13 Carriage and Insurance

- 13.1 Unless agreed otherwise, the Purchaser shall bear the cost of carriage.
- 13.2 The Purchaser shall be responsible for transport insurance against damage of whatever kind. Even when such insurance is arranged by George Fischer it shall be deemed taken out by the order of and for the account of the Purchaser and at his risk.
- 13.3 Special requests regarding carriage and insurance shall be communicated to George Fischer in due time. Otherwise carriage shall be arranged by George Fischer at their discretion, but without responsibility, by the quickest and cheapest method possible.
In case of carriage-paid delivery transport arrangements shall be made by George Fischer. If the Purchaser specifies particular requirements, any extra costs involved shall be borne by him.
- 13.4 In the event of damage or loss of the Products during carriage the Purchaser shall mark the delivery documents accordingly and immediately have the damage ascertained by the carrier. Not readily ascertainable damages sustained during carriage shall be notified to the carrier within six days after receipt of the Products.

14 Inspection and Acceptance

- 14.1 The Products will be subject to normal inspection by George Fischer during manufacture. Additional tests required by the Purchaser shall be agreed upon in writing and shall be charged to the Purchaser.
- 14.2 It shall be a condition of George Fischer's obligation under the warranties stated hereinafter that George Fischer be notified in writing by the Purchaser of any purported defect immediately upon discovery. Notice concerning weight, numbers or apparent defects is to be given latest within 30 days from receipt of the Products, notice of other defects latest within the agreed warranty period.
- 14.3 Purchaser shall not dispose of allegedly defective Products until all warranty and/or damage claims are finally settled. At its request, defective Products are to be placed at George Fischer's disposal.
- 14.4 At its request, George Fischer shall be given the opportunity to inspect the damage, prior to commencement of remedial work, either itself or by third party experts.

15 Warranty

- 15.1 At the written request of the Purchaser, George Fischer undertake to repair or replace at their discretion, as quickly as possible and free of charge all Products supplied which demonstrably suffer from faulty design, materials or workmanship or from faulty operating or installation instructions.
Replaced parts shall become property of George Fischer.
For Products which are manufactured to specifications, drawings or patterns supplied by the Purchaser, George Fischer's warranty shall be restricted to proper materials and workmanship.
- 15.2 The Purchaser shall be entitled to cancel the contract or to demand a reduction in the contract price if:
 - repair or replacement is impossible, or
 - George Fischer are unable or refuse to remedy the defect or replace the defective Products within a reasonable, or
 - George Fischer are unduly delaying such remedy or replacement.
- 15.3 For Products or essential components manufactured by a third party and supplied by George Fischer under this contract, George Fischer's warranty is limited to the warranty provided by said third party.
- 15.4 This warranty shall not apply to damage resulting from normal wear, improper storage and maintenance, failure to observe the operating instructions, overstraining or overloading, unsuitable operating media, unsuitable construction work or unsuitable building ground, improper repairs or alterations by the Purchaser or third parties, the use of non-genuine parts and other reasons beyond George Fischer's control.
- 15.5 No action or claim may be brought by the Purchaser on account of any alleged breach of warranty or any other obligation of George Fischer after the expiration of twelve (12) months from receipt of the Products by the end user or at the latest within eighteen (18) months of the Products being despatched by George Fischer.
- 15.6 In case of Products for use in domestic installations or in utilities
 - George Fischer will assume the costs of dismantling the defective Product and restoring the damaged object as well as, in case of negligence, all other direct damages caused by the defective Product (damage to property and injury to or death of persons) up to CHF 1'000'000 per occurrence.
 - the statute of limitations for warranty or damage claims - contrary to Section 15.5 - will be 5 years from the date of installation.

16 Limitation of Liability

All cases of breach of contract and the relevant consequences as well as all rights and claims on the part of the customer, irrespective on what ground they are based, are exhaustively covered by these general conditions of supply. In particular, any claims not expressly mentioned for damages, reduction of price, termination of or withdrawal from the contract are excluded. In no case whatsoever shall the customer be entitled to claim damages other than compensation for costs of remedying defects in the supplies. This in particular refers, but shall not be limited, to loss of production, loss of use, loss of orders, loss of profit and other direct or indirect or consequential damage. This exclusion of liability, however, does not apply to unlawful intent or gross negligence on the part of George Fischer and in case of strict liability under applicable product liability statutes, but does apply to unlawful intent or gross negligence of persons employed or appointed by the supplier to perform any of its obligations.

17 Severability

Should any term or clause of these General Conditions in whole or in part be found to be unenforceable or void, all other provisions shall remain in full force and effect and the unenforceable or void provision shall be replaced by a valid provision, which comes closest to the original intention of the unenforceable or invalid provision.

18 Place of Performance and Jurisdiction

- 18.1 Place of performance for the Products shall be the George Fischer works from which the Products are despatched.
- 18.2 Any civil action based upon any alleged breach of this contract shall be filed and prosecuted exclusively in the courts of Schaffhausen, Switzerland.
George Fischer however reserves the right to file actions in any court having jurisdiction over controversies arising out of or in connection with the present contract.
- 18.3 The contract shall be governed by Swiss law without regard to conflict of law provisions that would require the application of another law.

1/2004

Australia

George Fischer Pty Ltd
Kingsgrove NSW 2008
Phone +61(0)2/95 54 39 77
sales@georgefischer.com.au
www.georgefischer.com.au

Austria

Georg Fischer
Rohrleitungssysteme GmbH
3130 Herzogenburg
Phone +43(0)2782/856 43-0
office@georgefischer.at
www.georgefischer.at

Belgium/Luxembourg

Georg Fischer NV/SA
1070 Bruxelles/Brüssel
Phone +32(0)2/556 40 20
info.be@be.piping.georgefischer.com
www.georgefischer.be

Brazil

George Fischer Ltda
04795-100 São Paulo
Phone +55(0)11/5687 1311

China

Georg Fischer Piping Systems Ltd Shanghai
Pudong, Shanghai 201319
Phone +86(0)21/58 13 33 33
info@cn.piping.georgefischer.com
www.cn.piping.georgefischer.com

Denmark/Iceland

Georg Fischer A/S
2630 Taastrup
Phone +45 (0)70 22 19 75
info@dk.piping.georgefischer.com
www.georgefischer.dk

France

Georg Fischer S.A.S.
93208 Saint-Denis Cedex 1
Phone +33(0)1/492 21 34 1
info@georgefischer.fr
www.georgefischer.fr

Germany

Georg Fischer GmbH
73095 Albershausen
Phone +49(0)7161/302-0
info@georgefischer.de
www.vgd.georgefischer.de

Georg Fischer DEKA GmbH
35232 Dautphetal-Mornshausen
Phone +49(0)6468/915-0
info@dekapipe.de
www.dekapipe.de

Greece

Georg Fischer S.p.A.
10434 Athens
Phone +30(0)1/882 04 91
office@piping-georgefischer.gr

India

George Fischer Piping Systems Ltd
400 093 Mumbai
Phone +91(0)22/2820 2362
branchoffice@georgefischer.net

Italy

Georg Fischer S.p.A.
20063 Cernusco S/N (MI)
Phone +3902/921 861
office@piping.georgefischer.it
www.georgefischer.it

Japan

Georg Fischer Ltd
556-0011 Osaka,
Phone +81(0)6/6635 2691
info@georgefischer.jp
www.georgefischer.jp

Malaysia

Georg Fischer (M) Sdn. Bhd.
47500 Subang Jaya
Phone +60 (0)3-8024 7879
conne.kong@georgefischer.com.my

Netherlands

Georg Fischer N.V.
8161 PA Epe
Phone +31(0)578/678 222
info.vgn@nl.piping.georgefischer.com
www.georgefischer.nl

Norway

Georg Fischer AS
1351 Rud
Phone +47(0)67 18 29 00
info@no.piping.georgefischer.com
www.georgefischer.no

Poland

Georg Fischer Sp. z o.o.
02-226 Warszawa
Phone +48(0)22/313 10 50
www.georgefischer.pl

Romania

Georg Fischer
Rohrleitungssysteme AG
70000 Bucharest - Sector 1
Phone +40(0)1/222 91 36
office@georgefischer.ro

Singapore

George Fischer Pte Ltd
417 845 Singapore
Phone +65(0)67 47 06 11
info@georgefischer.com.sg
www.georgefischer.com.sg

Spain/Portugal

Georg Fischer S.A.
28046 Madrid
Phone +34(0)91/781 98 90
info@georgefischer.es
www.georgefischer.es

Sweden/Finland

Georg Fischer AB
12523 Älvsjö-Stockholm
Phone +46(0)8/506 775 00
info@georgefischer.se
www.georgefischer.se

Switzerland

Georg Fischer Rohrleitungssysteme (Schweiz) AG
8201 Schaffhausen
Phone +41(0)52 631 30 26
info@rohrleitungssysteme.georgefischer.ch
www.piping.georgefischer.ch

United Kingdom/Ireland

George Fischer Sales Limited
Coventry, CV2 2ST
Phone +44(0)2476 535 535
info@georgefischer.co.uk
www.georgefischer.co.uk

USA/Canada/Latin America/Caribbean

George Fischer Inc.
Tustin, CA 92780-7258
Phone +1(714) 731 88 00, Toll Free 800/854 40 90
info@us.piping.georgefischer.com
www.us.piping.georgefischer.com

Export

Georg Fischer Rohrleitungssysteme (Schweiz) AG
8201 Schaffhausen
Phone +41(0)52 631 11 11
export@piping.georgefischer.com
www.piping.georgefischer.com