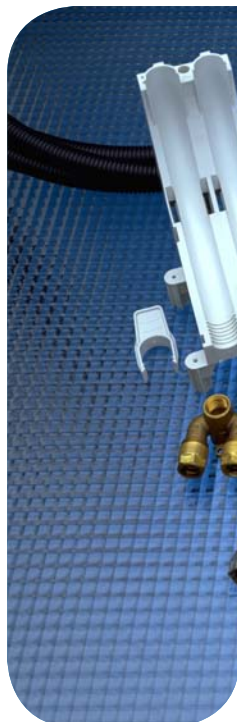


INSTAFLEX –
the complete piping system
d 16 – d 25 for potable
water installations

As well as for
industrial applications

INSTAFLEX

Fitting for Compression Jointing
Product Range 2005



Contents

	Page
Pipes and Accessories	6
Outlet Joints and Accessories	9
Fittings for Compression Jointing	23
Fittings for Water Meter	27
Manifolds and Accessories	28
Service Cabinets	32
Pipe Supports and Brackets	33
Valves	38
Spare Parts	39
Machines and Tools	41
Numerical Product Range	
Arranged according to catalogue number	43
Arranged according to code	46
General Conditions of Supply of Georg Fischer Building Technology Ltd	50

General Information

Explanation of signs

PB	Polybutylene
PE	Polyethylene
PP	Polypropylene
d	Pipe outside diameter
EPDM	Ethylene propylene rubber
s	Wall thickness of the pipe
d _{Cu}	Copper pipe outside diameter
DN	Nominal bore
Ø	Diameter
LK	Hole circle
SW	Dimension across flats (A/F)
G	Pipe thread, not pressure tight in the thread (with flat seat) to ISO 228
R	Taper male thread, pressure tight in the thread to ISO 7
Rp	Parallel female thread, pressure tight in the thread to ISO 7
M	Metric thread to ISO 261
m	Meter
SP	Items per standard pack
g	Gramme

Dimensions

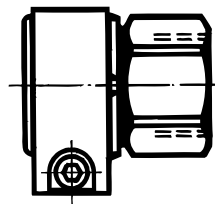
All dimensions are given in mm and are intended as nominal or average sizes. Subject to alteration resulting from modifications in design.

SW of the compression fittings

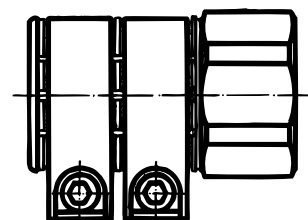
d 16 SW = 24

d 20 SW = 27

Compression Fittings



d 25 and d 32
with one tightening strap



d 40, d 50, d 63, d 75
with two tightening straps

For compressed air applications with air containing mineral oil, EPDM gaskets must be replaced by NBR units.

This mainly concerns unions and flange connections.

NBR gaskets are not contained in this Product Range. Please contact the George Fischer sales consultant or sales support office assigned to your sales area.

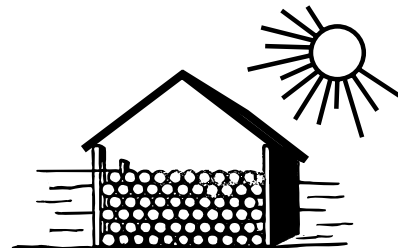
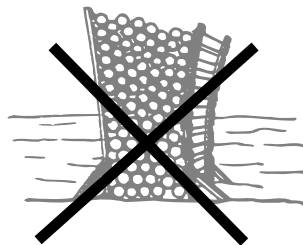
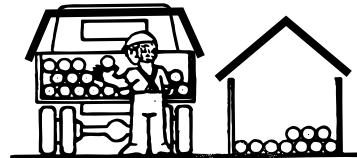
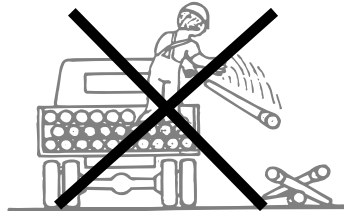
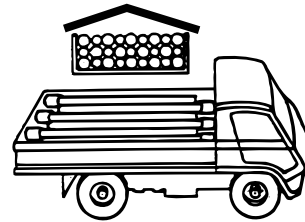
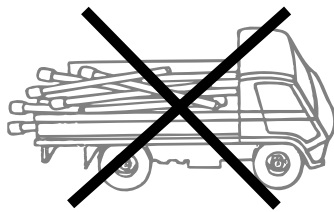
+GF+ and **INSTAFLEX** are registered trademarks.

Working with plastic pipes and fittings

Transport and storage of plastic pipes

WRONG

RIGHT



Plastics are materials sensitive to impact and crushing at low temperatures. The temperature limit depends on the relevant material.

PP-R	+5 °C
PVC-C	
PB	-10 °C

Below these temperatures pipes and fittings would have to be protected particularly from impacts, crushing and other external mechanical stresses.



Safety instruction

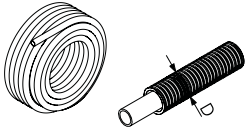
Plastic pipes and plastic fittings must be protected in principle from external influences. Direct sunlight, impacts and compressive stresses should be avoided. The pipes and fittings must be left in their packing until used. They should not be stored out of doors.

Pipes in coils

3700

Pipe PB in protective pipe in coils

packed in cardboard boxes

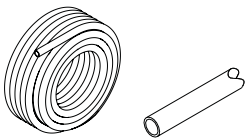


d x s	Code	SP	kg/m	D	
16x2,2	760 853 387	60 m ^l	0,162	25	
20x2,8	760 853 388	60 m ^l	0,235	30	
25x2,3	760 854 910	30 m ^l	0,270	34	

3710

Pipe PB in coils

packed in cardboard boxes



d x s	Code	SP	kg/m		
16x2,2	760 853 389	60 m ^l	0,100		
20x2,8	760 853 390	60 m ^l	0,150		
25x2,3	760 854 946	30 m ^l	0,165		

3720

Protective pipe in coils

packed in cardboard boxes



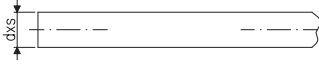
d	Code	SP	kg/m	D	
16	760 853 393	60 m ^l	0,062	25	
20	760 853 394	60 m ^l	0,085	30	

Pipes in bars

3714

Pipe PB in bars of 5,8 m

packed in cardboard boxes

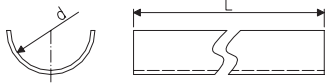


d x s	Code	SP	kg	
16x 2,2	760 856 606	9 x 5,8 m ¹	0,100	
20x 2,8	760 856 607	9 x 5,8 m ¹	0,150	
25x 2,3	760 856 608	10 x 5,8 m ¹	0,165	

Accessories

3931

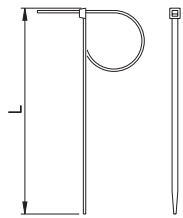
Clip-carrier



d	Code	SP	kg	L	
16	760 856 602	10 x 3m ¹	0,270	3m ¹	
20	760 856 603	10 x 3m ¹	0,320	3m ¹	
25	760 856 604	10 x 3m ¹	0,480	3m ¹	

3930

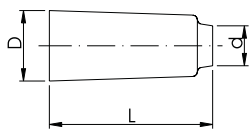
Pipe binder



d	Code	SP	kg	L	
16- 40	760 853 283	100	0,001	200	
50- 75	760 853 284	100	0,003	300	
90-110	760 854 984	100	0,001	430	

3921

Cap for protective pipe



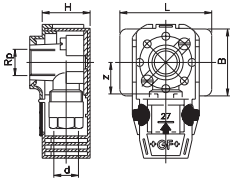
d		Code	SP	kg	L	D	
16	red	760 854 986	10	0,005	70	25	
16	green	760 854 987	10	0,005	70	25	
20	red	760 854 988	10	0,007	70	30	
20	green	760 854 989	10	0,007	70	30	

Outlet Joints and Accessories

Outlets joints with blue box

3000

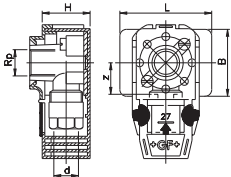
Single pipe outlet 1/2"



d-Rp	Code	SP	kg	H	z	
16-1/2	760 869 914	10	0,241	48	28	
20-1/2	760 856 021	1	0,330	48	28	

3000

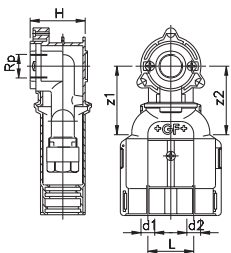
Single pipe outlet 3/4"



d-Rp	Code	SP	kg	H	L	B	z	
20-3/4	760 856 022	1	0,350	46	70	50	28	

3002

Dual pipe outlet 1/2"



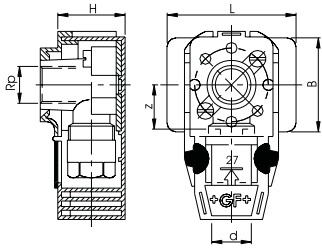
d1-Rp-d2	Code	SP	kg	H	L	z1	z2	
16-1/2-16	760 856 023	10	0,510	48	40	67	67	
16-1/2-20	760 856 027	1	0,600	48	40	67	69	
20-1/2-16	760 856 029	1	0,600	48	40	69	67	
20-1/2-20	760 856 025	1	0,670	48	40	69	69	

Outlet Joints with Black Box

3006

Single pipe outlet, without plate

to slide on to distance plate and plate for single mounting
 *Assembly only on plate 760 853 064

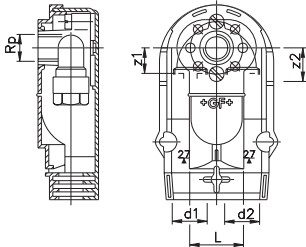


d-Rp	Code	SP	kg	H	z	
16-1/2	760 853 075	10	0,260	40	26	
*20-1/2	760 854 606	1	0,290	40	28	

3016

Dual pipe outlet, without plate

to slide on to distance plate and plate for single mounting



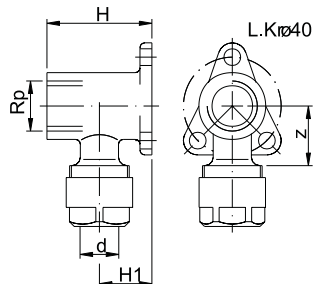
d1-Rp-d2	Code	SP	kg	L	z1	z2	
16-1/2-16	760 853 076	10	0,399	40	20	20	

Outlet Joints without Box

3032

Single pipe outlet, with flange

* for plate GIS
screw 760 856 040, self tapping M 6x12

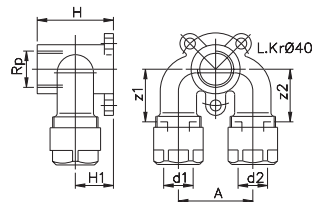


d-Rp	Code	SP	kg	H	H1	z	
16-1/2	760 853 013	10	0,256	44	22	28	
16-1/2	760 856 036	2	0,269	60	22	28	
16-1/2	760 856 037	2	0,319	80	22	28	
* 16-1/2	760 856 043	10	0,280	100	22	28	
20-1/2	760 854 682	10	0,330	44	25	28	

3043

Dual pipe outlet, with flange

* for plate GIS
screw 760 856 040, self tapping M 6x12

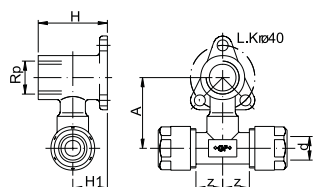


d1-Rp-d2	Code	SP	kg	H	H1	A	z1	z2	
16-1/2-16	760 853 059	1	0,325	44	22	40	30	30	
* 16-1/2-16	760 856 045	1	0,385	100	22	40	30	30	
20-1/2-20	760 869 902	1	0,440	44	25	40	32	32	

3030

Dual pipe outlet, with flange

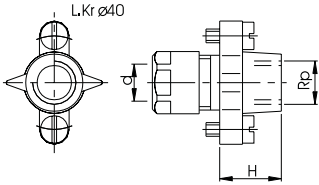
screw 760 856 040, self tapping M 6x12



d-Rp-d	Code	SP	kg	H	H1	z	
16-1/2-16	760 853 014	10	0,374	44	22	19	

3041

Single pipe outlet, straight

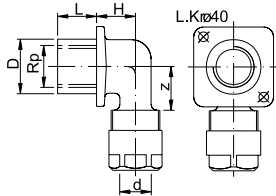


d-Rp	Code	SP	kg	H	
16-1/2	760 853 096	1	0,167	36	

3064

Single pipe outlet, with flange

Screw 760 856 040, selftapping M6x12

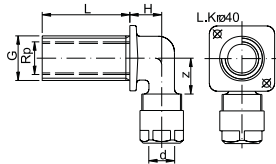


d-Rp	Code	SP	kg	H	L	D	z
16-1/2	760 869 904	2	0,215	22	20	27	26

3066

Single pipe outlet, with flange

Screw 760 856 040, selftapping M6x12

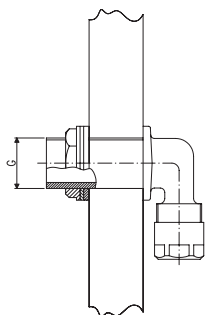


d-Rp-G	Code	SP	kg	H	L	z
16-1/2-3/4	760 856 041	2	0,270	20	30	26
16-1/2-3/4	760 869 906	2	0,260	20	55	26
16-1/2-3/4	760 869 923	2	0,360	20	100	26

3067

Fastening set

Consists of: Union nut, washer, seal



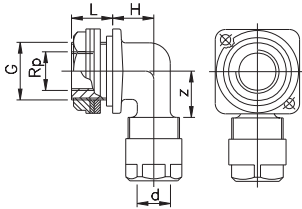
G	Code	SP	kg
3/4	760 854 699	10	0,045

Pipe outlet for lavatory cistern

3071

Single pipe outlet

with fastening set

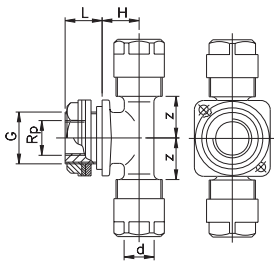


d-Rp	Code	SP	kg	SP	H	L	z	G	
16-1/2	760 856 011	5	0,200	5	22	14	26	1"	

3073

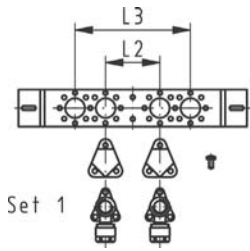
Dual pipe outlet, not interchangeable

with fastening set



d-Rp-d	Code	SP	kg	H	L	z	G	
16-1/2-16	760 856 013	1	0,340	22	14	26	1"	

3173

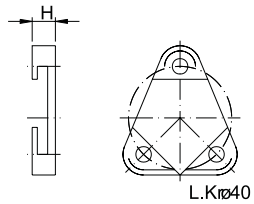


Pipe outlet GIS

Set 1 consisting: 1 Distance plate
 2 Rubber isolator
 6 screws
 2 Single pipe Outlet d16-1/2"

	Code	SP	kg	L1	L2	
Set 1	760 856 010	1	0,982	153	73	

3172



Rubber isolator

suitable for single and dual pipe outlets

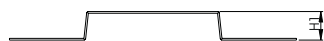
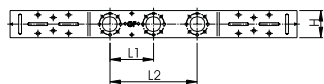
	Code	SP	kg	H	
	760 856 205	20	0,007	9	

3100

Angular plate

with LK 40 and thread M6

*suitable also for GIS

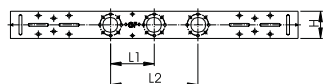


	Code	SP	kg	H	H1	L1	L2
single	760 869 917	5	0,310	50	51	-	-
double	760 869 916	5	0,560	50	51	100	-
*double	760 856 042	5	0,600	50	51	-	153
*triple	760 869 915	5	0,600	50	51	80	153

3101

Distance plate flat

with LK 40 and thread M6

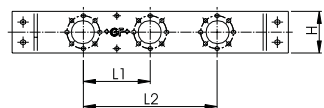


	Code	SP	kg	H	L1	L2
single	760 869 920	5	0,460	50	-	-
double	760 869 919	5	0,560	50	100	-
triple	760 869 918	5	0,600	50	80	153

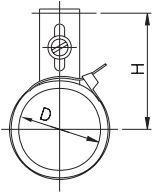
3102

Distance plate for dry lined walls

with LK 40 and thread M6



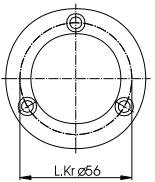
	Code	SP	kg	H	H1	L1	L2
	760 869 921	5	0,350	50	21	80	153

3152**Bracket for waste pipe**

	Code	SP	kg	D	H	
	760 854 677	1	0,080	56	65-80	

3171**Fastening disc**

including screws
suitable for single and dual pipe outlet

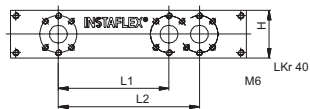


	Code	SP	kg			
	760 856 204	2	0,050			

3154/3155/3168 Distance plate

for single and dual pipe outlets

* additional also for pipe outlet with blue box for assembly on wood

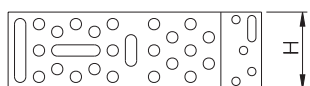


	Code	SP	kg	L1	L2	H	
3154	760 853 722	5	0,277	76,5	100	50	
3155	760 853 723	10	0,365	120	153	50	
* 3168	760 869 907	10	0,330	120	153	50	

3156

Angular support

including screws

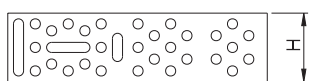
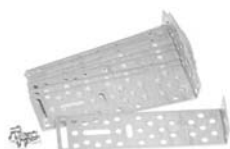


	Code	SP	kg	H	H1	
	760 853 080	10	0,135	50	50	

3157

Angular support for double wall

including screws

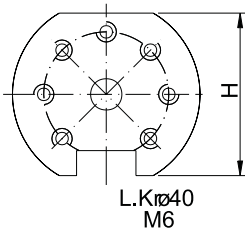


	Code	SP	kg	H	
	760 854 683	10	0,296	50	

3817

Plate

for single pipe outlet



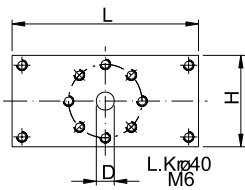
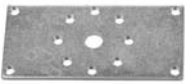
	Code	SP	kg	H	
	760 853 064	1	0,076	50	

3153/3169

Plate

single mounting, for dual pipe outlet No cat. 3016

* additional also for pipe outlet with blue box for assembly on wood



	Code	SP	kg	D	H	L	
3153	760 853 065	10	0,146	10	50	102	
* 3169	760 869 908	10	0,135	29	50	102	

3011

Cover for single pipe outlet



d	Code	SP	kg	
16 / 20	760 856 008	10	0,036	

3012

Cover for dual pipe outlet

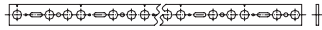


d	Code	SP	kg	
16 / 20	760 856 009	10	0,043	

Accessories

3935

Installation bar, length 2 m¹



	Code	SP	kg	
	760 853 683	5	2,840	

3936

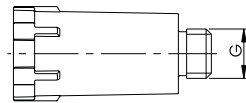
Mounting bolt



G	Code	SP	kg	
1/2	760 853 291	5	0,141	

3937

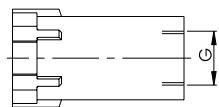
Wall inlet plug



G	Code	SP	kg	
1/2	760 853 297	10	0,088	

3938

Fastening sleeve

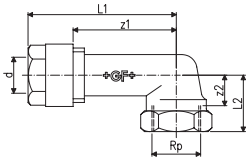


G	Code	SP	kg	
1/2	760 853 298	10	0,051	

Pipe outlet for compressed air application

3367

Single pipe outlet, 90°

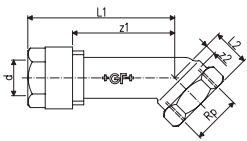


d-Rp	Code	SP	kg	L1	L2	z1	z2
16-1/2	760 854 882	5	0,204	67	30	46	17
20-1/2	760 854 883	5	0,210	74	30	48	17
20-3/4	760 854 884	5	0,260	76	30	50	16
25-3/4	760 854 886	2	0,455	93	30	59	16

3372

Single pipe outlet, 45°

available as long as stock exist

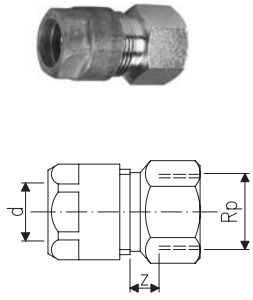


d-Rp	Code	SP	kg	L1	L2	z1	z2
20-1/2	760 854 888	5	0,180	68	20	43	7

Fittings for Compression Joints

3301

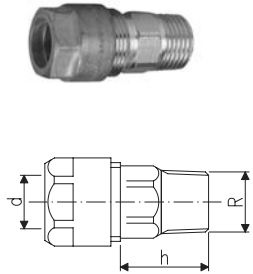
Adaptor with female thread



d-Rp	Code	SP	kg	z	
16-1/2	760 853 104	5	0,125	12	
16-3/4	760 853 105	5	0,128	15	
20-1/2	760 853 194	5	0,196	14	
20-3/4	760 853 153	5	0,182	16	
25-3/4	760 854 735	2	0,400	16	
25-1	760 869 982	2	0,430	16	

3310

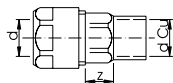
Adaptor with male thread



d-R	Code	SP	kg	h	
16-1/2	760 853 107	5	0,111	30	
16-3/4	760 853 108	5	0,161	34	
20-1/2	760 853 195	5	0,202	38	
20-3/4	760 853 138	5	0,222	36	
25-3/4	760 854 745	2	0,347	37	
25-1	760 869 983	2	0,400	37	

3320

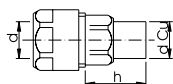
Adaptor with soldering end, socket



d-DN Cu	Code	SP	kg	z	
16-15	760 853 114	2	0,097	14	
16-18	760 853 196	2	0,093	12	
20-18	760 853 197	2	0,168	14	
20-22	760 853 139	2	0,156	11	

3321

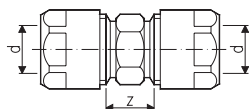
Adaptor with soldering end, spigot



d-DN Cu	Code	SP	kg	h	
16-15	760 853 113	2	0,097	28	
16-18	760 853 198	2	0,103	30	
20-18	760 853 199	2	0,135	35	
20-22	760 854 700	2	0,155	38	

3330

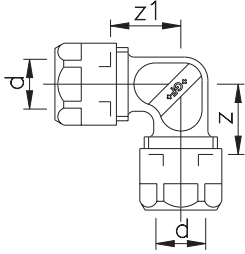
Socket



d	Code	SP	kg	z	
16	760 853 124	2	0,196	26	
20	760 853 151	2	0,294	28	

3363

Elbow 90°

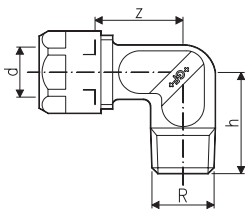


d	Code	SP	kg	z	z1
16	760 854 842	5	0,199	22	22
20	760 854 843	5	0,262	24	24

3364

Adaptor elbow 90° with male thread

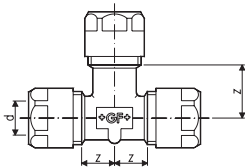
suited for flush tank concealed Fron Top from Georg Fischer Schwab



d-R	Code	SP	kg	h	z
16-1/2	760 854 838	5	0,171	35	27
16-3/4	760 854 839	5	0,184	35	27
20-1/2	760 869 991	5	0,190	35	29
20-3/4	760 854 840	5	0,208	35	29
25-3/4	760 854 819	2	0,500	40	29

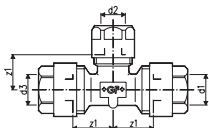
3350

Tee 90° equal



d	Code	SP	kg	z
16	760 853 125	2	0,259	22
20	760 853 131	2	0,388	24

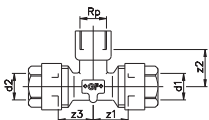
3355/3356/3357 Tee 90°, reduced



d1-d2-d3	Code	SP	kg	z1	z2	z3
3355 20-16-20	760 853 136	2	0,360	24	23	23
3356 20-16-16	760 853 140	2	0,330	24	23	23
3357 20-20-16	760 853 137	2	0,319	24	24	23

3359

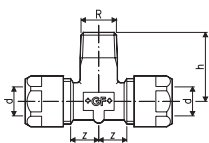
Adaptor Tee with female thread



d-Rp-d	Code	SP	kg	z1	z2	z3
20-1/2-20	760 854 841	5	0,320	24	22	24

3358

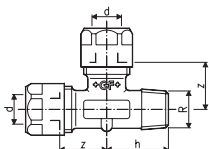
Adaptor Tee with male thread



d-R-d	Code	SP	kg	z	h
16-1/2-16	760 854 711	2	0,225	19	38
20-1/2-20	760 856 211	2	0,327	24	39

3360

Adaptor Tee with male thread



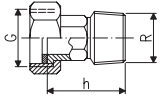
d-d-R	Code	SP	kg	z	h
16-16-1/2	760 869 987	2	0,200	22	30

Fittings for Water Meter

3312

Adaptor union flat seal with male thread

inclusive gasket, Tesnit UNI blue free of asbestos, according to DIN 3754

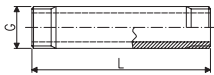


G-R	Code	SP	kg	h	
³ / ₄ - ³ / ₄	760 854 716	2	0,106	37	

3314

Adaptor pipe

for water meter



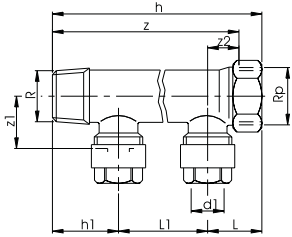
G	Code	SP	kg	L	
³ / ₄	760 854 717	1	0,244	110	

Manifolds in nonferrous metal

3270

Manifold 90°, 3/4" (DN 20)

metal with compression connections



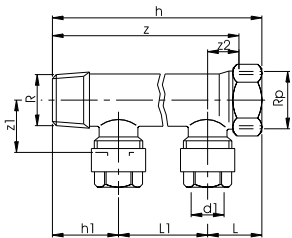
Rp/R-d		Code	SP	kg	
3/4-16	single	760 853 189	5	0,207	
3/4-20	single	760 853 190	5	0,264	
3/4-16	double	760 853 180	5	0,383	
3/4-16	triple	760 853 181	5	0,560	
3/4-16	4 fold	760 853 182	5	0,718	

Rp/R-d		h	h1	L	L1	z	z1	z2	
3/4-16	single	59	31	28	-	45	24	14	
3/4-20	single	69	36	33	-	55	26	19	
3/4-16	double	104	31	28	45	90	24	14	
3/4-16	triple	149	31	28	45	135	24	14	
3/4-16	4 fold	194	31	28	45	180	24	14	

3250

Manifold 90°, 1" (DN 25)

metal with compression connections



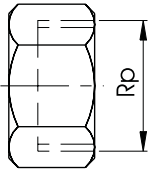
Rp/R-d		Code	SP	kg	
1-16	single	760 854 860	5	0,210	
1-20	single	760 854 855	5	0,260	
1-16	double	760 854 861	1	0,460	
1-20	double	760 854 892	5	0,640	
1-16	triple	760 854 862	1	0,670	
1-16	4 fold	760 854 863	1	0,860	

Rp/R-d		h	h1	L	L1	z	z1	z2	
1-16	single	62	34	28	-	45	29	11	
1-20	single	75	42	33	-	58	29	16	
1-16	double	107	34	28	45	90	29	11	
1-20	double	135	42	33	60	118	29	16	
1-16	triple	152	34	28	45	135	29	11	
1-16	4 fold	197	34	28	45	180	29	11	

Accessories

3266

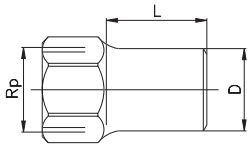
Cap



Rp	Code	SP	kg		
³ / ₄	760 853 794	5	0,084		
1	760 853 706	5	0,134		

3268

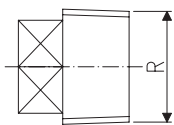
Cap long



Rp	Code	SP	kg	L	D	
³ / ₄	760 853 596	5	0,162	34	27	
1	760 853 527	5	0,209	34	32	

3267

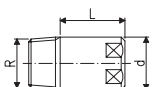
Plug



R	Code	SP	kg		
³ / ₄	760 853 792	5	0,050		
1	760 853 793	5	0,084		

3264

Plug long

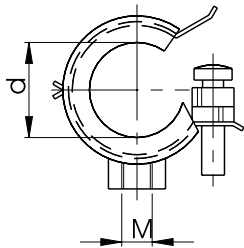
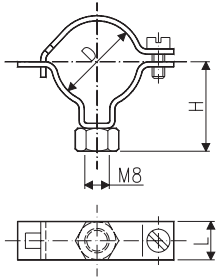


R	Code	SP	kg	D	L	
³ / ₄	760 869 989	5	0,150	27	52	
1	760 869 990	5	0,200	33	54	

3292 / 3286

Mounting bracket M8

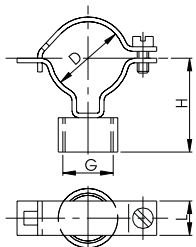
for service cabinet



manifold	Code	SP	kg	D	H	L	Execution
3292 ^{3/4}	760 853 187	10	0,051	26	32	15	without rubber
3286 ^{3/4}	760 856 212	10	0,029	26	30	18	with rubber

3293

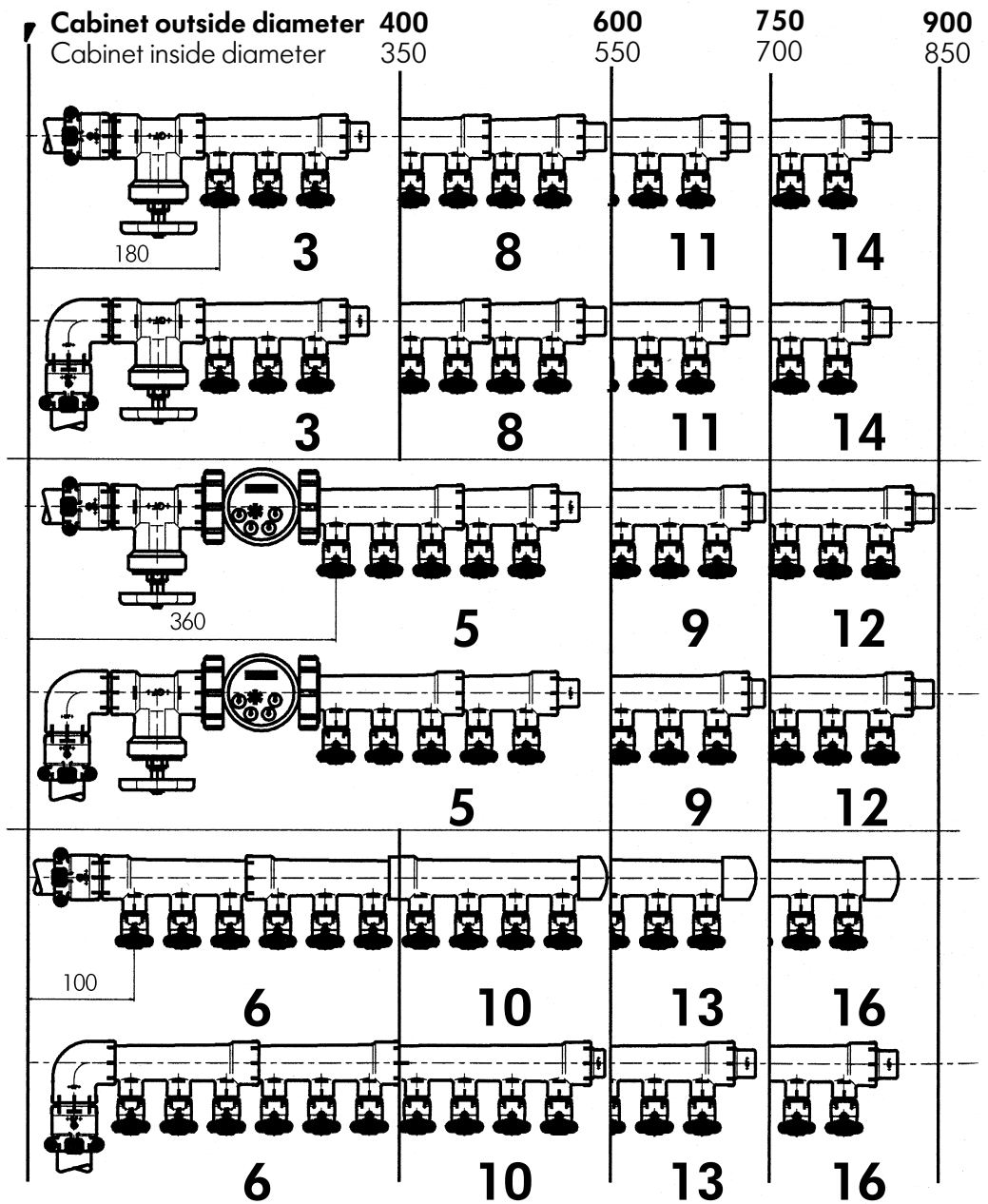
Mounting bracket G 1/2"



manifold	Code	SP	kg	D	H	L	G
^{3/4}	760 853 128	10	0,084	26	38	15	1/2

Distributor in the cabinet

Number of outlets according to cabinet size for PB distributors d 25 and metal distributors $\frac{3}{4}$ " and 1"



Cabinet size:	400	600	750	900
Distributor with valve	3	8	11	14
Distributor with valve and water meter	—	5	9	12
Distributor only	6	10	13	16

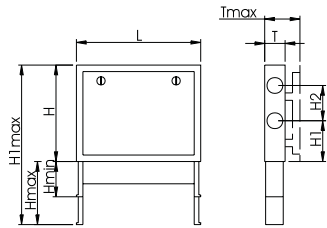
Service cabinet

3240

Service cabinet



LxHxT	Code	SP	kg
600x500x100	760 856 201	1	13,000
750x500x100	760 856 202	1	15,000

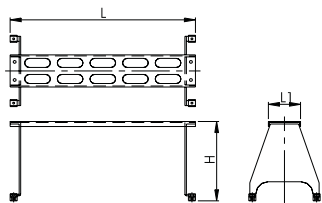


LxHxT	H1	H2	H min.	H max.	T min.	T max.
600x500x100	200	175	200	350	100	175
750x500x100	200	175	200	350	100	175

3248

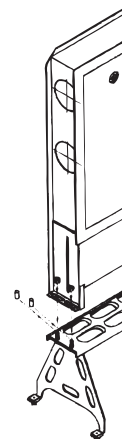
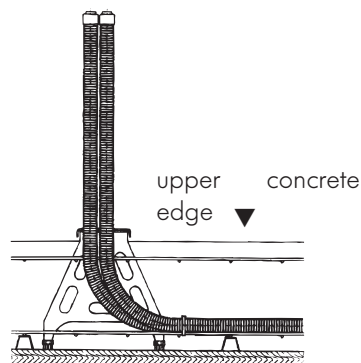
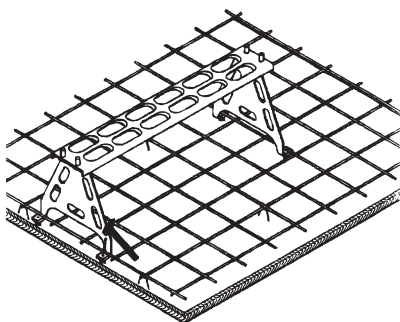
Support with pipe guidage

can also be used as laying aids



to service cabinet	Code	SP	kg	screw holes	L	L1	H
600	760 856 207	1	2,500	6	600	100	270
750	760 856 208	1	2,800	7	750	100	270

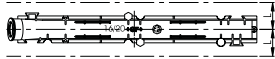
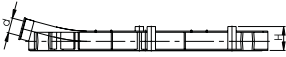
Application example



Pipe supports and brackets

3890

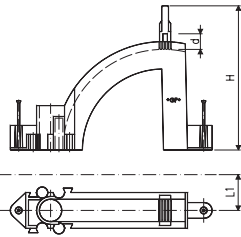
Pipe transfer piece d 16/d 20



d	Code	SP	kg	L	H	
16 / 20	760 853 299	30	0,118	400	40	

3891

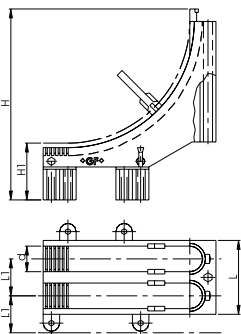
Pipe transfer bend d 16/d 20



d	Code	SP	kg	L1	H	
16 / 20	760 853 300	18	0,106	45	180	

3892

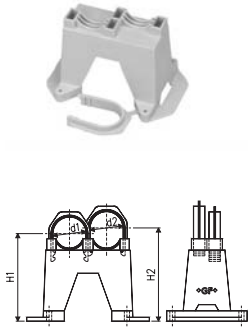
Insta pipe support d 16/d 20



d	Code	SP	kg		L	L1	H	H1	
16 / 20	760 853 399	12	0,228	double	210	45	235	150	

3900

Pipe support



d1-d2	Code	SP	kg	H1	H2
16 / 20	760 853 759	20	0,052	85	88

3903

Fawa pipe support

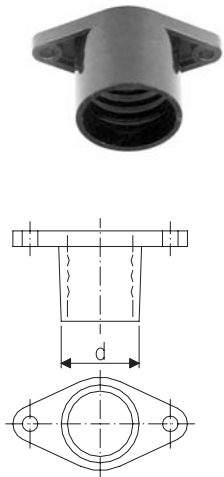


d	Code	SP	kg	
16 / 20	760 853 278	50	0,103	double

3949

Coupling for protective pipe

for pipe transfer piece 3891

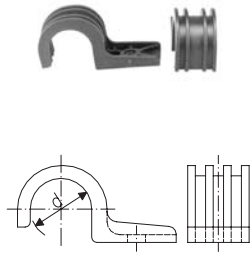


d	Code	SP	kg
16	760 853 316	9	0,009
20	760 853 753	9	0,012

Pipe supports and brackets

3913

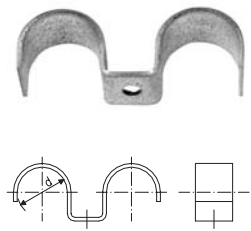
Single Pipe clip, plastic



d	Code	SP	kg
16	760 853 627	50	0,006

3915

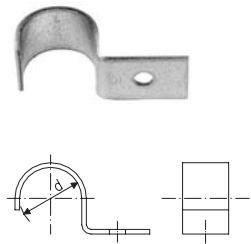
Dual Pipe clip, metal



d	Code	SP	kg
16	760 853 628	50	0,040

3920

Single Pipe clip, metal

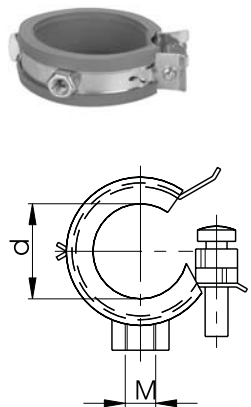


d	Code	SP	kg
16	760 853 254	50	0,027
20	760 853 567	50	0,031
25	760 854 951	50	0,042

5091

Pipe clamp

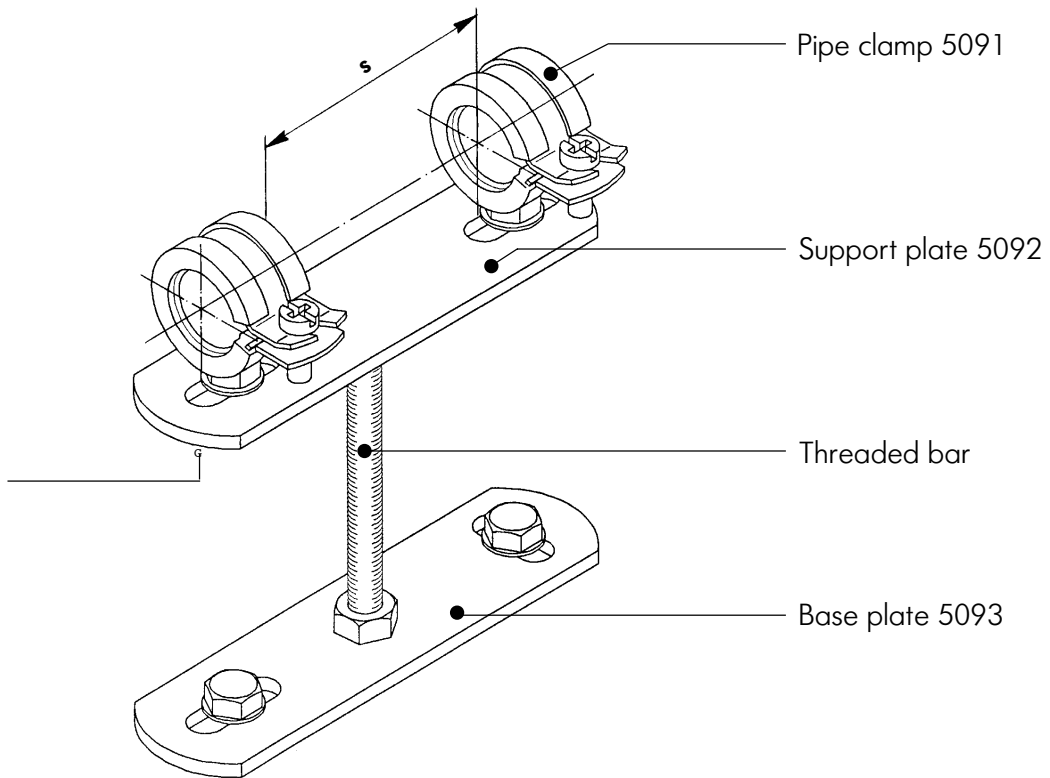
d16 - d75 = **M8**
d90 - d110 = **M10**



d	Code	SP	kg
16	761 066 296	50	0,040
20	761 066 297	50	0,050
25	761 066 298	50	0,051

Fixed point design

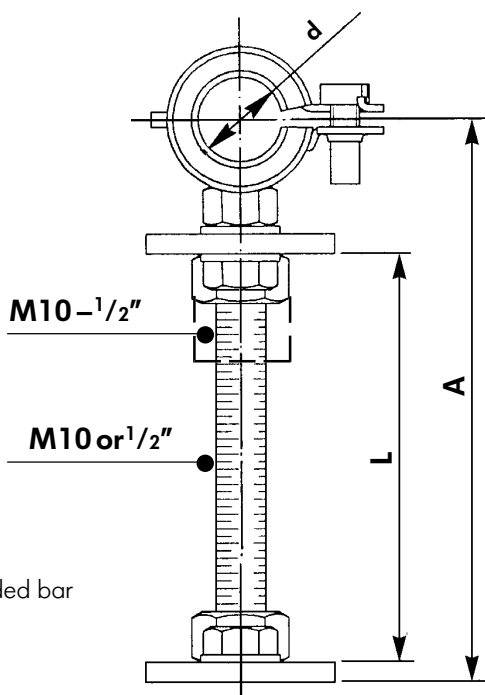
Cap screw
M 8 5095



s = Distance between pipe clamps

Support plate No cat.	1	2	3	4
Distance between pipe clamps «s»	33 – 63	64 – 94	97 – 125	132 – 162

Reducer
5094



L = Length of threaded bar

A = Axis space

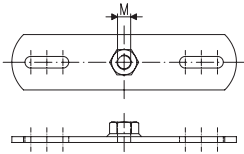
$$L = A - x$$

Threaded bar	x		
	M10	1/2"	
Pipe clamp diameter d	16	27	49
	20	31	53
	25	33	55
	32	38	60
	40	42	64
	50	46	68
	63	53	75
	75	60	82

5092

Support plate

for fixing point

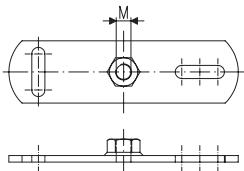


Grösse	Code	SP	kg	s	M
1	761 066 731	10	0,135	33-63	M10
2	761 066 732	10	0,170	64-94	M10
3	761 066 733	10	0,211	97-125	M10
4	761 066 734	10	0,253	132-162	M10

5093

Base plate

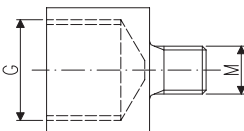
* for fixing point



	Code	SP	kg	M
*	761 066 741	50	0,159	M8
*	761 066 735	50	0,170	M10
*	761 066 311	20	0,181	G ¹ / ₂

5094

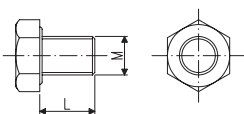
Reducer



M-G	Code	SP	kg
M8-G ¹ / ₂	761 066 318	20	0,055
M10-G ¹ / ₂	761 066 306	20	0,055

5095

Cap screw

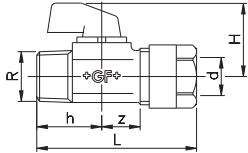


M	Code	SP	kg	L
M8	761 066 307	100	0,009	10

Valves in Metal

3430

Ball valve with male thread

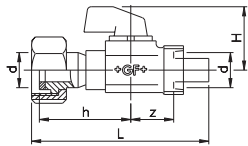


d-R	Code	SP	kg	L	H	h	z	
16-1/2	760 853 229	2	0,265	70	32	28	20	
20-3/4	760 853 230	2	0,320	78	32	32	20	

3431

Ball valve suitable on compression connection

inclusive gasket, Tesnit UNI blue free of asbestos, according to DIN 3754

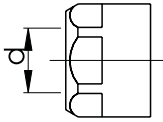


d	Code	SP	kg	L	H	h	z	M	
16	760 853 231	2	0,310	94	32	53	20	25	
20	760 853 232	2	0,370	101	32	57	20	30	

Spare Parts - Compression Joint

3800

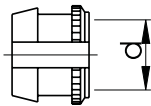
Union nut



d	Code	SP	kg	
16	760 853 018	5	0,032	
20	760 853 071	2	0,043	

3801

Clamping ring

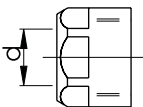


d	Code	SP	kg	
16	760 853 019	5	0,014	
20	760 853 072	2	0,020	

3211

Cap

including seal

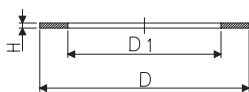


d	Code	SP	kg	
16	760 853 110	5	0,051	
20	760 853 150	5	0,094	

3803

Seal for cap

Material: Tesnit UNI blau asbestfrei nach DIN 3754



d	Code	SP	kg	D	D1	H	
16 / 20	760 853 021	5	0,003	14,5	6	3	

Spare Parts - Outlet Joints

3804

Screw for plate

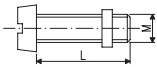
for outlet joints without box



M	Code	SP	kg	L		
M6	760 853 022	100	0,003	8		
M6	760 856 040	100	0,005	16	self tapping	

3805

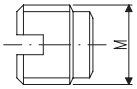
Screw for outlets with black box



M	Code	SP	kg	L		
M6	760 853 023	10	0,005	20		

3831

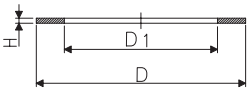
Plug for mounting bolt



M	Code	SP	kg			
M12	760 854 918	10	0,008			

3832

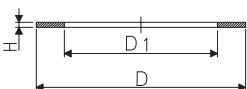
Seal for mounting bolt



	Code	SP	kg	D	D1	H	
	760 854 045	10	0,003	9,5	4	2	

3827

Seal for wall inlet plug



	Code	SP	kg	D	D1	H	
	760 853 175	10	0,002	29	19	3	

Tools for Compression Joints

3955



consists of: Tool case, Assembly tongs, pipe shears, Cutter for protective piper, Mandrel, Calibrating tool for Pipes PB, Template, Ratched spanner, Spanner

	Code	SP	kg		
	760 854 948	1	7,870		

3905



Assembly tongs

d	Code	SP	kg		
16 / 20	760 853 743	1	0,420		
25	760 869 950	1	0,418		

3908



Pipe shears

d	Code	SP	kg		
16-25	760 853 279	1	0,269		

3911



Cutter for protective piper

	Code	SP	kg		
	760 853 273	1	0,087		

3917**Calibrating tool for pipes PB**

d	Code	SP	kg	
16	760 853 379	1	0,320	
20	760 853 380	1	0,329	
25	760 853 381	1	0,363	

5314**Template, compression and fusion joints**

d	Code	SP	kg	
16-63	761 066 800	1	0,040	

3954**Ratched spanner**

for tightening and loosening of compression fittings d16 und d20



SW	d	Code	SP	kg	
24	16	760 854 916	1	0,280	
27	20	760 854 917	1	0,586	

Numerical Product Range

Arranged according to catalogue number

CATALOGUE NUMBER	DIMENSION	SP	PAGE	CODE	ARTICLE
3000	16-1/2	10	9	760 869 914	SINGLE PIPE OUTLET
3000	20-1/2	1	9	760 856 021	SINGLE PIPE OUTLET
3000	20-3/4	1	9	760 856 022	SINGLE PIPE OUTLET
3002	16-1/2-16	10	9	760 856 023	DUAL PIPE OUTLET
3002	16-1/2-20	1	9	760 856 027	DUAL PIPE OUTLET
3002	20-1/2-16	1	9	760 856 029	DUAL PIPE OUTLET
3002	20-1/2-20	1	9	760 856 025	DUAL PIPE OUTLET
3006	16-1/2	10	10	760 853 075	SINGLE PIPE OUTLET
3006	20-1/2	1	10	760 854 606	SINGLE PIPE OUTLET
3011	16/20	10	20	760 856 008	COVER FOR SINGLE PIPE OUTLET
3012	16/20	10	20	760 856 009	COVER FOR SINGLE PIPE OUTLET
3016	16-1/2-16	10	10	760 853 076	DUAL PIPE OUTLET
3030	16-1/2-16	10	11	760 853 014	DUAL PIPE OUTLET
3032	16-1/2 40	10	11	760 853 013	SINGLE PIPE OUTLET
3032	16-1/2 60	2	11	760 856 036	SINGLE PIPE OUTLET
3032	16-1/2 80	2	11	760 856 037	SINGLE PIPE OUTLET
3032	16-1/2 100	10	11	760 856 043	SINGLE PIPE OUTLET
3032	20-1/2 40	10	11	760 854 682	SINGLE PIPE OUTLET
3041	16-1/2	1	12	760 853 096	SINGLE PIPE OUTLET
3043	16-1/2-16 40	1	11	760 853 059	DUAL PIPE OUTLET
3043	16-1/2-16 100	1	11	760 856 045	DUAL PIPE OUTLET
3043	20-1/2-20 40	1	11	760 869 902	DUAL PIPE OUTLET
3064	16-1/2	2	13	760 869 904	SINGLE PIPE OUTLET
3066	16-3/4+1/2 30	2	13	760 856 041	SINGLE PIPE OUTLET
3066	16-3/4+1/2 55	2	13	760 869 906	SINGLE PIPE OUTLET
3066	16-3/4+1/2 100	2	13	760 869 923	SINGLE PIPE OUTLET
3067	3/4	10	13	760 854 699	FASTENING SET
3071	16-1/2	5	14	760 856 011	SINGLE PIPE OUTLET
3073	16-1/2-16	5	14	760 856 013	DUAL PIPE OUTLET
3100		5	16	760 869 917	ANGULAR PLATE
3100		5	16	760 869 916	ANGULAR PLATE
3100		5	16	760 856 042	ANGULAR PLATE
3100		5	16	760 869 915	ANGULAR PLATE
3101		5	16	760 869 920	DISTANCE PLATE FLAT
3101		5	16	760 869 919	DISTANCE PLATE FLAT
3101		5	16	760 869 918	DISTANCE PLATE FLAT
3102		5	16	760 869 921	DISTANCE PLATE
3152		1	17	760 854 677	BRACKET FOR WASTE PIPE
3153		10	19	760 853 065	PLATE
3154	76,5/100	5	18	760 853 722	DISTANCE PLATE
3155	120/153	10	18	760 853 723	DISTANCE PLATE
3156		10	18	760 853 080	ANGULAR SUPPORT
3157	350/360	10	18	760 854 683	ANGULAR SUPPORT
3168		10	18	760 869 907	DISTANCE PLATE
3169		10	19	760 869 908	DISTANCE PLATE
3171		2	17	760 856 204	FASTENING DISC
3172		20	15	760 856 205	RUBBER ISOLATOR
3173	SET 1	1	15	760 856 010	RACCORD GIS
3211	16	5	39	760 853 110	CAP
3211	20	5	39	760 853 150	CAP
3240	600x500x100	1	32	760 856 201	SERVICE CABINET
3240	750x500x100	1	32	760 856 202	SERVICE CABINET
3248		1	32	760 856 207	SUPPORT
3248		1	32	760 856 208	SUPPORT
3250	1-16	5	28	760 854 860	MANIFOLD 90 SINGLE
3250	1-16	1	28	760 854 861	MANIFOLD 90 DOUBLE
3250	1-16	1	28	760 854 862	MANIFOLD 90 TRIPLE
3250	1-16	1	28	760 854 863	MANIFOLD 90 4 FOLD
3250	1-20	5	28	760 854 855	MANIFOLD 90 SINGLE
3250	1-20	5	28	760 854 892	MANIFOLD 90 DOUBLE
3264	3/4	5	29	760 869 989	PLUG LONG
3264	1	5	29	760 869 990	PLUG LONG
3266	3/4	5	29	760 853 794	CAP
3266	1	5	29	760 853 706	CAP
3267	3/4	5	29	760 853 792	PLUG
3267	1	5	29	760 853 793	PLUG
3268	3/4	5	29	760 853 596	CAP LONG
3268	1	5	29	760 853 527	CAP LONG
3270	3/4-16	5	28	760 853 189	MANIFOLD 90 SINGLE
3270	3/4-16	5	28	760 853 180	MANIFOLD 90 DOUBLE
3270	3/4-16	5	28	760 853 181	MANIFOLD 90 TRIPLE
3270	3/4-16	5	28	760 853 182	MANIFOLD 90 4 FOLD
3270	3/4-20	5	28	760 853 190	MANIFOLD 90 SINGLE
3286	3/4	10	30	760 856 212	MOUNTING BRACKET M8
3292	3/4	10	30	760 853 187	MOUNTING BRACKET M8
3293	3/4	10	30	760 853 128	MOUNTING BRACKET G 1/2
3301	16-1/2	5	23	760 853 104	ADAPTOR
3301	16-3/4	5	23	760 853 105	ADAPTOR
3301	20-1/2	5	23	760 853 194	ADAPTOR
3301	20-3/4	5	23	760 853 153	ADAPTOR
3301	25-3/4	5	23	760 854 735	ADAPTOR
3301	25-1	5	23	760 869 982	ADAPTOR
3310	16-1/2	5	23	760 853 107	ADAPTOR
3310	16-3/4	5	23	760 853 108	ADAPTOR
3310	20-1/2	5	23	760 853 195	ADAPTOR
3310	20-3/4	5	23	760 853 138	ADAPTOR
3310	25-3/4	5	23	760 854 745	ADAPTOR
3310	25-1	5	23	760 869 983	ADAPTOR
3312	3/4	2	27	760 854 716	ADAPTOR UNION
3314	3/4	1	27	760 854 717	ADAPTOR PIPE

CATALOGUE NUMBER	DIMENSION	SP	PAGE	CODE	ARTICLE
3320	16-15	2	24	760 853 114	ADAPTOR SOLDERING END
3320	16-18	2	24	760 853 196	ADAPTOR SOLDERING END
3320	20-18	2	24	760 853 197	ADAPTOR SOLDERING END
3320	20-22	2	24	760 853 139	ADAPTOR SOLDERING END
3321	16-15	2	24	760 853 113	ADAPTOR SOLDERING END
3321	16-18	2	24	760 853 198	ADAPTOR SOLDERING END
3321	20-18	2	24	760 853 199	ADAPTOR SOLDERING END
3321	20-22	2	24	760 854 700	ADAPTOR SOLDERING END
3330	16	2	24	760 853 124	SOCKET
3330	20	2	24	760 853 151	SOCKET
3350	16	2	25	760 853 125	TEE 90 EQUAL
3350	20	2	25	760 853 131	TEE 90 EQUAL
3355	20-16-20	2	26	760 853 136	TEE 90 REDUCED
3356	20-16-16	2	26	760 853 140	TEE 90 REDUCED
3357	20-20-16	2	26	760 853 137	TEE 90 REDUCED
3358	16-1/2-16	2	26	760 854 711	ADAPTOR TEE 90
3358	20-1/2-20	2	26	760 856 211	ADAPTOR TEE 90
3359	20-1/2-20	5	26	760 854 841	ADAPTOR TEE 90
3360	16-16-1/2	2	26	760 869 987	ADAPTOR TEE 90
3363	16	5	25	760 854 842	ELBOW 90
3363	20	5	25	760 854 843	ELBOW 90
3364	16-1/2	5	25	760 854 838	ADAPTOR ELBOW 90
3364	16-3/4	5	25	760 854 839	ADAPTOR ELBOW 90
3364	20-1/2	5	25	760 869 991	ADAPTOR ELBOW 90
3364	20-3/4	5	25	760 854 840	ADAPTOR ELBOW 90
3364	25-3/4	2	25	760 854 819	ADAPTOR ELBOW 90
3367	16-1/2	5	22	760 854 882	SINGLE PIPE OUTLET 90
3367	20-1/2	5	22	760 854 883	SINGLE PIPE OUTLET 90
3367	20-3/4	5	22	760 854 884	SINGLE PIPE OUTLET 90
3367	25-3/4	2	22	760 854 886	SINGLE PIPE OUTLET 90
3372	20-1/2	5	22	760 854 888	SINGLE PIPE OUTLET 90
3430	16-1/2	2	38	760 853 229	BALL VALVE
3430	20-3/4	2	38	760 853 230	BALL VALVE
3431	16	2	38	760 853 231	BALL VALVE
3431	20	2	38	760 853 232	BALL VALVE
3700	16X2,2	60 M	6	760 853 387	60 M PIPE PB IN PROTECTIVE PIPE
3700	20X2,8	60 M	6	760 853 388	60 M PIPE PB IN PROTECTIVE PIPE
3700	25X2,3	30 M	6	760 854 910	30 M PIPE PB IN PROTECTIVE PIPE
3710	16X2,2	60 M	6	760 853 389	60 M PIPE PB
3710	20X2,8	60 M	6	760 853 390	60 M PIPE PB
3710	25X2,3	30 M	6	760 854 946	30 M PIPE PB
3714	16X2,2	9X5,8 M	7	760 856 606	5.8 M PIPE PB
3714	20X2,8	9X5,8 M	7	760 856 607	5.8 M PIPE PB
3714	25X2,3	9X5,8 M	7	760 856 608	5.8 M PIPE PB
3720	16	60 M	6	760 853 393	PROTECTIVE PIPE PE
3720	20	60 M	6	760 853 394	PROTECTIVE PIPE PE
3800	16	5	39	760 853 018	UNION NUT
3800	20	2	39	760 853 071	UNION NUT
3801	16	5	39	760 853 019	CLAMPING RING
3801	20	2	39	760 853 072	CLAMPING RING
3803		5	39	760 853 021	SEAL FOR CAP
3804	M6X16	100	40	760 856 022	SCREW FOR PLATE
3804	M6X16	100	40	760 856 040	SCREW FOR PLATE
3805	M6X20	10	40	760 853 023	SCREW FOR PLATE
3817		1	19	760 853 064	PLATE
3827		10	40	760 853 175	SEAL
3831	M12	10	40	760 854 918	PLUG
3832		10	40	760 854 045	SEAL
3890	16/20	30	33	760 853 299	PIPE TRANSFER PIECE
3891	16/20	18	33	760 853 300	PIPE TRANSFER BEND
3892	16/20	12	33	760 853 399	INSTA PIPE SUPPORT
3900	16/20	20	34	760 853 759	PIPE SUPPORT
3903	16/20	50	34	760 853 278	FAWA PIPE SUPPORT
3905	16/20	1	41	760 853 743	ASSEMBLY TONGS
3905	25	1	41	760 869 950	ASSEMBLY TONGS
3908	16/25	1	41	760 853 279	PIPE SHEARS
3911	16/20	1	41	760 853 273	CUTTER FOR PROTECTIVE PIPE
3913	16	1	35	760 853 627	PIPE CLIP PLASTIC
3915	16	1	35	760 853 628	PIPE CLIP METAL
3917	16	1	42	760 853 379	CALIBRATING TOOL
3917	20	1	42	760 853 380	CALIBRATING TOOL
3917	25	1	42	760 853 381	CALIBRATING TOOL
3920	16	50	35	760 853 254	PIPE CLIP METAL
3920	20	50	35	760 853 567	PIPE CLIP METAL
3920	25	50	35	760 854 951	PIPE CLIP METAL
3921	16 RED	10	8	760 854 986	CAP FOR PROTECTIVE PIPE
3921	16 GREEN	10	8	760 854 987	CAP FOR PROTECTIVE PIPE
3921	20 RED	10	8	760 854 988	CAP FOR PROTECTIVE PIPE
3921	20 GREEN	10	8	760 854 989	CAP FOR PROTECTIVE PIPE
3930	200	100	8	760 853 283	PIPE BINDER
3930	300	100	8	760 853 284	PIPE BINDER
3930	430	100	8	760 854 984	PIPE BINDER
3931	16	10X3 M	8	760 856 602	CLIP CARRIER
3931	20	10X3 M	8	760 856 603	CLIP CARRIER
3931	25	10X3 M	8	760 856 604	CLIP CARRIER
3935		1/2/5/10	21	760 853 683	INSTALLATION BAR
3936	1/2	5	21	760 853 291	INSTALLATION BOLT
3937	1/2	10	21	760 853 297	WALL INLET PLUG
3938	1/2	10	21	760 853 298	FASTENING SLEEVE
3949	16/25	9	34	760 853 316	COUPLING FOR PROTECTIVE PIPE
3949	20/25	9	34	760 853 753	COUPLING FOR PROTECTIVE PIPE
3954	SW 24	1	42	760 854 916	RATCHED SPANNER
3954	SW 27	1	42	760 854 917	RATCHED SPANNER
3955	25	1	41	760 854 948	TOOL CASE
5091	16	50	35	761 066 296	PIPE CLAMP
5091	20	50	35	761 066 297	PIPE CLAMP
5091	25	50	35	761 066 298	PIPE CLAMP
5092		10	37	761 066 731	SUPPORT PLATE
5092		10	37	761 066 732	SUPPORT PLATE
5092		10	37	761 066 733	SUPPORT PLATE

CATALOGUE NUMBER	DIMENSION	SP	PAGE	CODE	ARTICLE
5092		10	37	761 066 734	SUPPORT PLATE
5093		20	37	761 066 311	BASE PLATE
5093		50	37	761 066 741	BASE PLATE
5093		50	37	761 066 735	BASE PLATE
5094	M8-G1/2	20	37	761 066 318	REDUCER
5094	M8-G1/2	20	37	761 066 306	REDUCER
5095		100	37	761 066 307	CAP SCREW
5314	16-63	1	42	761 066 800	TEMPLATE

Numerical Product Range

Arranged according to code

CATALOGUE NUMBER	DIMENSION	SP	PAGE	CODE	ARTICLE
3032	16-1/2 40	10	11	760 853 013	SINGLE PIPE OUTLET
3030	16-1/2-16	10	11	760 853 014	DUAL PIPE OUTLET
3800	16	5	39	760 853 018	UNION NUT
3801	16	5	39	760 853 019	CLAMPING RING
3803		5	39	760 853 021	SEAL FOR CAP
3805	M6X20	10	40	760 853 023	SCREW FOR PLATE
3043	16-1/2-16 40	1	11	760 853 059	DUAL PIPE OUTLET
3817		1	19	760 853 064	PLATE
3153		10	19	760 853 065	PLATE
3800	20	2	39	760 853 071	UNION NUT
3801	20	2	39	760 853 072	CLAMPING RING
3006	16-1/2	10	10	760 853 075	SINGLE PIPE OUTLET
3016	16-1/2-16	10	10	760 853 076	DUAL PIPE OUTLET
3156		10	18	760 853 080	ANGULAR SUPPORT
3041	16-1/2	1	12	760 853 096	SINGLE PIPE OUTLET
3301	16-1/2	5	23	760 853 104	ADAPTOR
3301	16-3/4	5	23	760 853 105	ADAPTOR
3310	16-1/2	5	23	760 853 107	ADAPTOR
3310	16-3/4	5	23	760 853 108	ADAPTOR
3211	16	5	39	760 853 110	CAP
3321	16-15	2	24	760 853 113	ADAPTOR SOLDERING END
3320	16-15	2	24	760 853 114	ADAPTOR SOLDERING END
3330	16	2	24	760 853 124	SOCKET
3350	16	2	25	760 853 125	TEE 90 EQUAL
3293	3/4	10	30	760 853 128	MOUNTING BRACKET G 1/2
3350	20	2	25	760 853 131	TEE 90 EQUAL
3355	20-16-20	2	26	760 853 136	TEE 90 REDUCED
3357	20-20-16	2	26	760 853 137	TEE 90 REDUCED
3310	20-3/4	5	23	760 853 138	ADAPTOR
3320	20-22	2	24	760 853 139	ADAPTOR SOLDERING END
3356	20-16-16	2	26	760 853 140	TEE 90 REDUCED
3211	20	5	39	760 853 150	CAP
3330	20	2	24	760 853 151	SOCKET
3301	20-3/4	5	23	760 853 153	ADAPTOR
3827		10	40	760 853 175	SEAL
3270	3/4-16	5	28	760 853 180	MANIFOLD 90 DOUBLE
3270	3/4-16	5	28	760 853 181	MANIFOLD 90 TRIPLE
3270	3/4-16	5	28	760 853 182	MANIFOLD 90 4 FOLD
3292	3/4	10	30	760 853 187	MOUNTING BRACKET M8
3270	3/4-16	5	28	760 853 189	MANIFOLD 90 SINGLE
3270	3/4-20	5	28	760 853 190	MANIFOLD 90 SINGLE
3301	20-1/2	5	23	760 853 194	ADAPTOR
3310	20-1/2	5	23	760 853 195	ADAPTOR
3320	16-18	2	24	760 853 196	ADAPTOR SOLDERING END
3320	20-18	2	24	760 853 197	ADAPTOR SOLDERING END
3321	16-18	2	24	760 853 198	ADAPTOR SOLDERING END
3321	20-18	2	24	760 853 199	ADAPTOR SOLDERING END
3430	16-1/2	2	38	760 853 229	BALL VALVE
3430	20-3/4	2	38	760 853 230	BALL VALVE
3431	16	2	38	760 853 231	BALL VALVE
3431	20	2	38	760 853 232	BALL VALVE
3920	16	50	35	760 853 254	PIPE CLIP METAL
3911	16/20	1	41	760 853 273	CUTTER FOR PROTECTIVE PIPE
3903	16/20	50	34	760 853 278	FAWA PIPE SUPPORT
3908	16/25	1	41	760 853 279	PIPE SHEARS
3930	200	100	8	760 853 283	PIPE BINDER
3930	300	100	8	760 853 284	PIPE BINDER
3936	1/2	5	21	760 853 291	INSTALLATION BOLT
3937	1/2	10	21	760 853 297	WALL INLET PLUG
3938	1/2	10	21	760 853 298	FASTENING SLEEVE
3890	16/20	30	33	760 853 299	PIPE TRANSFER PIECE
3891	16/20	18	33	760 853 300	PIPE TRANSFER BEND
3949	16/25	9	34	760 853 316	COUPLING FOR PROTECTIVE PIPE
3917	16	1	42	760 853 379	CALIBRATING TOOL
3917	20	1	42	760 853 380	CALIBRATING TOOL
3917	25	1	42	760 853 381	CALIBRATING TOOL
3700	16X2,2	60 M	6	760 853 387	60 M PIPE PB IN PROTECTIVE PIPE
3700	20X2,8	60 M	6	760 853 388	60 M PIPE PB IN PROTECTIVE PIPE
3710	16X2,2	60 M	6	760 853 389	60 M PIPE PB
3710	20X2,8	60 M	6	760 853 390	60 M PIPE PB
3720	16	60 M	6	760 853 393	PROTECTIVE PIPE PE
3720	20	60 M	6	760 853 394	PROTECTIVE PIPE PE
3892	16/20	12	33	760 853 399	INSTA PIPE SUPPORT
3268	1	5	29	760 853 527	CAP LONG
3920	20	50	35	760 853 567	PIPE CLIP METAL
3268	3/4	5	29	760 853 596	CAP LONG
3913	16	1	35	760 853 627	PIPE CLIP PLASTIC
3915	16	1	35	760 853 628	PIPE CLIP METAL
3935		1/2/5/10	21	760 853 683	INSTALLATION BAR
3266	1	5	29	760 853 706	CAP
3154	76,5/100	5	18	760 853 722	DISTANCE PLATE
3155	120/153	10	18	760 853 723	DISTANCE PLATE
3905	16/20	1	41	760 853 743	ASSEMBLY TONGS
3949	20/25	9	34	760 853 753	COUPLING FOR PROTECTIVE PIPE
3900	16/20	20	34	760 853 759	PIPE SUPPORT
3267	3/4	5	29	760 853 792	PLUG
3267	1	5	29	760 853 793	PLUG
3266	3/4	5	29	760 853 794	CAP
3832		10	40	760 854 045	SEAL
3006	20-1/2	1	10	760 854 606	SINGLE PIPE OUTLET

CATALOGUE NUMBER	DIMENSION	SP	PAGE	CODE	ARTICLE
3152		1 SATZ	17	760 854 677	BRACKET FOR WASTE PIPE
3032	20-1/2 40	10	11	760 854 682	SINGLE PIPE OUTLET
3157	350/360	10 SATZ	18	760 854 683	ANGULAR SUPPORT
3067	3/4	10	13	760 854 699	FASTENING SET
3321	20-22	2	24	760 854 700	ADAPTOR SOLDERING END
3358	16-1/2-16	2	26	760 854 711	ADAPTOR TEE 90
3312	3/4	2	27	760 854 716	ADAPTOR UNION
3314	3/4	1	27	760 854 717	ADAPTOR PIPE
3301	25-3/4	2	23	760 854 735	ADAPTOR
3310	25-3/4	2	23	760 854 745	ADAPTOR
3364	25-3/4	2	25	760 854 819	ADAPTOR ELBOW 90
3364	16-1/2	5	25	760 854 838	ADAPTOR ELBOW 90
3364	16-3/4	5	25	760 854 839	ADAPTOR ELBOW 90
3364	20-3/4	5	25	760 854 840	ADAPTOR ELBOW 90
3359	20-1/2-20	5	26	760 854 841	ADAPTOR TEE 90
3363	16	5	25	760 854 842	ELBOW 90
3363	20	5	25	760 854 843	ELBOW 90
3250	1-20	5	28	760 854 855	MANIFOLD 90 SINGLE
3250	1-16	5	28	760 854 860	MANIFOLD 90 SINGLE
3250	1-16	1	28	760 854 861	MANIFOLD 90 DOUBLE
3250	1-16	1	28	760 854 862	MANIFOLD 90 TRIPLE
3250	1-16	1	28	760 854 863	MANIFOLD 90 4 FOLD
3367	16-1/2	5	22	760 854 882	SINGLE PIPE OUTLET 90
3367	20-1/2	5	22	760 854 883	SINGLE PIPE OUTLET 90
3367	20-3/4	5	22	760 854 884	SINGLE PIPE OUTLET 90
3367	25-3/4	2	22	760 854 886	SINGLE PIPE OUTLET 90
3372	20-1/2	5	22	760 854 888	SINGLE PIPE OUTLET 90
3250	1-20	5	28	760 854 892	MANIFOLD 90 DOUBLE
3700	25X2,3	30 M	6	760 854 910	30 M PIPE PB IN PROTECTIVE PIPE
3954	SW 24	1	42	760 854 916	RATCHED SPANNER
3954	SW 27	1	42	760 854 917	RATCHED SPANNER
3831	M12	10	40	760 854 918	PLUG
3710	25X2,3	30 M	6	760 854 946	30 M PIPE PB
3955	25	1	41	760 854 948	TOOL CASE
3920	25	50	35	760 854 951	PIPE CLIP METAL
3930	430	100	8	760 854 984	PIPE BINDER
3921	16 RED	10	8	760 854 986	CAP FOR PROTECTIVE PIPE
3921	16 GREEN	10	8	760 854 987	CAP FOR PROTECTIVE PIPE
3921	20 RED	10	8	760 854 988	CAP FOR PROTECTIVE PIPE
3921	20 GREEN	10	8	760 854 989	CAP FOR PROTECTIVE PIPE
3011	16/20	10	20	760 856 008	COVER FOR SINGLE PIPE OUTLET
3012	16/20	10	20	760 856 009	COVER FOR SINGLE PIPE OUTLET
3173	SET 1	1	15	760 856 010	RACCORD GIS
3071	16-1/2	5	14	760 856 011	SINGLE PIPE OUTLET
3073	16-1/2-16	5	14	760 856 013	DUAL PIPE OUTLET
3000	20-1/2	1	9	760 856 021	SINGLE PIPE OUTLET
3000	20-3/4	1	9	760 856 022	SINGLE PIPE OUTLET
3804	M6X16	100	40	760 856 022	SCREW FOR PLATE
3002	16-1/2-16	10	9	760 856 023	DUAL PIPE OUTLET
3002	20-1/2-20	1	9	760 856 025	DUAL PIPE OUTLET
3002	16-1/2-20	1	9	760 856 027	DUAL PIPE OUTLET
3002	20-1/2-16	1	9	760 856 029	DUAL PIPE OUTLET
3032	16-1/2 60	2	11	760 856 036	SINGLE PIPE OUTLET
3032	16-1/2 80	2	11	760 856 037	SINGLE PIPE OUTLET
3804	M6X16	100	40	760 856 040	SCREW FOR PLATE
3066	16-3/4+1/2 30	2	13	760 856 041	SINGLE PIPE OUTLET
3100		5	16	760 856 042	ANGULAR PLATE
3032	16-1/2 100	10	11	760 856 043	SINGLE PIPE OUTLET
3043	16-1/2-16 100	1	11	760 856 045	DUAL PIPE OUTLET
3240	600x500x100	1	32	760 856 201	SERVICE CABINET
3240	750x500x100	1	32	760 856 202	SERVICE CABINET
3171		2	17	760 856 204	FASTENING DISC
3172		20	15	760 856 205	RUBBER ISOLATOR
3248		1	32	760 856 207	SUPPORT
3248		1	32	760 856 208	SUPPORT
3358	20-1/2-20	2	26	760 856 211	ADAPTOR TEE 90
3286	3/4	10	30	760 856 212	MOUNTING BRACKET M8
3931	16	10X3 M	8	760 856 602	CLIP CARRIER
3931	20	10X3 M	8	760 856 603	CLIP CARRIER
3931	25	10X3 M	8	760 856 604	CLIP CARRIER
3714	16X2,2	9X5,8 M	7	760 856 606	5,8 M PIPE PB
3714	20X2,8	9X5,8 M	7	760 856 607	5,8 M PIPE PB
3714	25X2,3	9X5,8 M	7	760 856 608	5,8 M PIPE PB
3043	20-1/2-20 40	1	11	760 869 902	DUAL PIPE OUTLET
3064	16-1/2	2	13	760 869 904	SINGLE PIPE OUTLET
3066	16-3/4+1/2 55	2	13	760 869 906	SINGLE PIPE OUTLET
3168		10	18	760 869 907	DISTANCE PLATE
3169		10	19	760 869 908	DISTANCE PLATE
3000	16-1/2	10	9	760 869 914	SINGLE PIPE OUTLET
3100		5	16	760 869 915	ANGULAR PLATE
3100		5	16	760 869 916	ANGULAR PLATE
3100		5	16	760 869 917	ANGULAR PLATE
3101		5	16	760 869 918	DISTANCE PLATE FLAT
3101		5	16	760 869 919	DISTANCE PLATE FLAT
3101		5	16	760 869 920	DISTANCE PLATE FLAT
3102		5	16	760 869 921	DISTANCE PLATE
3066	16-3/4+1/2 100	2	13	760 869 923	SINGLE PIPE OUTLET
3905	25	1	41	760 869 950	ASSEMBLY TONGS
3301	25-1	2	23	760 869 982	ADAPTOR
3310	25-1	2	23	760 869 983	ADAPTOR
3360	16-16-1/2	2	26	760 869 987	ADAPTOR TEE 90
3264	3/4	5	29	760 869 989	PLUG LONG
3264	1	5	29	760 869 990	PLUG LONG
3364	20-1/2	5	25	760 869 991	ADAPTOR ELBOW 90
5091	16	50	35	761 066 296	PIPE CLAMP
5091	20	50	35	761 066 297	PIPE CLAMP
5091	25	50	35	761 066 298	PIPE CLAMP
5094	M8-G1/2	20	37	761 066 306	REDUCER
5095		100	37	761 066 307	CAP SCREW
5093		20	37	761 066 311	BASE PLATE

CATALOGUE NUMBER	DIMENSION	SP	PAGE	CODE	ARTICLE
5094	M8-G1/2	20	37	761 066 318	REDUCER
5092		10	37	761 066 731	SUPPORT PLATE
5092		10	37	761 066 732	SUPPORT PLATE
5092		10	37	761 066 733	SUPPORT PLATE
5092		10	37	761 066 734	SUPPORT PLATE
5093		50	37	761 066 735	BASE PLATE
5093		50	37	761 066 741	BASE PLATE
5314	16-63	1	42	761 066 800	TEMPLATE

General Condition of Supply of Georg Fischer Piping Systems Limited, Schaffhausen

1 General

- 1.1 These General Conditions shall apply to all Products supplied by George Fischer to the Purchaser.
They shall also apply to all future business even when no express reference is made to them.
- 1.2 Any deviating or supplementary conditions especially Purchaser's general conditions of purchase and verbal agreements shall only be applicable if accepted in writing by George Fischer.
- 1.3 The written form shall be deemed to be fulfilled by all forms of transmission, evidenced in the form of text, such as telefax, e-mail, etc.

2 Tenders

Tenders shall only be binding if they contain a specifically stated period for a acceptance.

3 Scope of Delivery

- 3.1 George Fischer's product range is subject to change.
- 3.2 The confirmation of order shall govern the scope and execution of the contract.

4 Data and Documents

- 4.1 Technical documents such as drawings descriptions illustrations and data on dimensions performance and weight as well as the reference to standards are for information purposes only. They are not warranted characteristics and are subject to change.
- 4.2 All technical documents shall remain the exclusive property of George Fischer and may only be used for the agreed purposes or as George Fischer may consent.

5 Confidentiality, Protection of Personal Data

- 5.1 Each party shall keep in strict confidence all commercial or technical information relating to the business of the other party, of which it has gained knowledge in the course of its dealing with the other party. Such information shall neither be disclosed to third parties nor used for other purposes than those for which the information has been supplied.
- 5.2 In the context of the contractual relation with the Purchaser personal data may be processed. The Purchaser agrees to the disclosure of said data to third parties such as foreign subcontractors and suppliers etc. .

6 Local Laws and Regulations, Export Controls

- 6.1 The Purchaser shall bring to the attention of George Fischer all local laws and regulations at the place of destination which bear connection with the execution of the contract and the adherence to relevant safety regulations and approval procedures.
- 6.2 In case of re-exports, Purchaser shall be responsible for compliance with pertinent export control regulations.

7 Price

- 7.1 Unless agreed otherwise, the prices shall be deemed quoted net ex works (according to Incoterms of the ICC, latest version) including standard packing. All supplementary costs such as the cost of carriage insurance export and import licences etc. shall be borne by the Purchaser. The Purchaser shall also bear the costs of all taxes fees duties etc. connected with the contract.
- 7.2 If the costs of packing, carriage, insurance, fees and other supplementary costs are included in the tender price or contract price or are referred to specifically in the tender or confirmation of order, George Fischer reserve the right to revise their prices accordingly should any change occur in the relevant tariffs.

8 Terms of Payment

- 8.1 The Purchaser shall make payment in the manner agreed by the parties to the George Fischer works conducting the a count without any deductions such as discounts, costs, taxes or dues.
- 8.2 The Purchaser may only withhold or off-set payments due against counter claims which are either expressly acknowledged by George Fischer or finally awarded to the Purchaser. In particular, payment shall still be made when unessential items are still outstanding provided, however, that the Products already delivered are not rendered unusable as a result.

9 Retention of Title

- 9.1 The Products shall remain the property of George Fischer until the Purchaser shall have settled all claims, present and future, which George Fischer may have against him.
- 9.2 Should the Purchaser sell Products to which title is reserved, in the ordinary course of business, he shall hereby be deemed to have tacitly assigned to George Fischer the proceeds deriving from their sale together with all collateral rights, securities and reservations of title until all claims held by George Fischer shall have been settled. Until revoked by George Fischer, this assignment shall not preclude Purchaser's right to collect the assigned receivables.
- 9.3 To the extent the value of the Products to which title is reserved together with collateral securities should exceed George Fischer's claims against the Purchaser by more than 20%, George Fischer shall re-assign the above proceeds to Purchaser at his request.

10 Delivery

- 10.1 The term of delivery shall commence as soon as the contract has been entered into, all official formalities such as import and payment permits have been obtained and all essential technical points have been settled. The term of delivery shall be deemed duly observed when, upon its expiry, the Products are ready for despatch.
- 10.2 Delivery is subject to the following conditions, i.e. the term of delivery shall be reasonably extended:
 - a) if George Fischer are not supplied in time with the information necessary for the execution of the contract or if subsequent changes causing delays are made by the Purchaser.
 - b) if George Fischer are prevented from performing the contract by force majeure. Force majeure shall equally be deemed to be any unforeseeable event beyond George Fischer's control which renders George Fischer's performance commercially impractical or impossible, such as delayed or defective supplies from sub contractors labour disputes, governmental orders or regulations, shortages in materials or energy, serious disturbances in George Fischer's works, such as the total or partial destruction of plant and equipment or the breakdown of essential facilities, serious disruptions in transport facilities, e.g. impassable roads.
Should the effect of force majeure exceed a period of six months, either party may cancel the contract forthwith.
George Fischer shall not be liable for any damage or loss of any kind whatsoever resulting therefrom, any suspension or cancellation being without prejudice to George Fischer's right to re over all sums due in respect of consignments delivered and costs incurred to date.
 - c) if the Purchaser is in delay with the fulfilment of his obligations under the contract, in particular, if he does not adhere to the agreed conditions of payment or if he has failed to timely provide the agreed securities.
- 10.3 If for reasons attributable to George Fischer the agreed term of delivery or a reasonable extension thereof is exceeded, George Fischer shall not be deemed in default until the Purchaser has granted to George Fischer in writing a reasonable extension thereof of not less than one month which equally is not met.
The Purchaser shall then be entitled to the remedies provided at law, it being however understood that, subject to limitations of Art. 16, damage claims shall be limited to max. 10% of the price of the delayed delivery.
- 10.4 Part shipments shall be allowed and George Fischer shall be entitled to invoice for such deliveries.
- 10.5 If the Purchaser fails to take delivery within a reasonable time of Products notified as ready for despatch, George Fischer shall be entitled to store the Products at the Purchaser's expense and risk and to invoice them as delivered. If Purchaser fails to effect payment, George Fischer shall be entitled to dispose of the Products.

- 10.6 Should Purchaser cancel an order without justification and should George Fischer not insist on the performance of the contract, George Fischer shall be entitled to damages in the amount of 10% of the contract price, unless George Fischer can prove higher damages.

11 Packing

If the Products are provided with additional packing over and above the standard packing, such packing shall be invoiced separately and be non-returnable.

12 Passing of Risk

- 12.1 The risk in the Products shall pass to the Purchaser as soon as they have left George Fischer's works (EX WORKS, Incoterms ICC, latest version), even if delivery is made carriage-paid, under similar clauses or including installation or when carriage is organized and managed by George Fischer.
- 12.2 If delivery is delayed for reasons beyond George Fischer's control, the risk shall pass to the Purchaser when he is notified that the Products are ready for despatch.

13 Carriage and Insurance

- 13.1 Unless agreed otherwise, the Purchaser shall bear the cost of carriage.
- 13.2 The Purchaser shall be responsible for transport insurance against damage of whatever kind. Even when such insurance is arranged by George Fischer it shall be deemed taken out by the order of and for the account of the Purchaser and at his risk.
- 13.3 Special requests regarding carriage and insurance shall be communicated to George Fischer in due time. Otherwise carriage shall be arranged by George Fischer at their discretion, but without responsibility, by the quickest and cheapest method possible.
In case of carriage-paid delivery transport arrangements shall be made by George Fischer. If the Purchaser specifies particular requirements, any extra costs involved shall be borne by him.
- 13.4 In the event of damage or loss of the Products during carriage the Purchaser shall mark the delivery documents accordingly and immediately have the damage ascertained by the carrier. Not readily ascertainable damages sustained during carriage shall be notified to the carrier within six days after receipt of the Products.

14 Inspection and Acceptance

- 14.1 The Products will be subject to normal inspection by George Fischer during manufacture. Additional tests required by the Purchaser shall be agreed upon in writing and shall be charged to the Purchaser.
- 14.2 It shall be a condition of George Fischer's obligation under the warranties stated hereinafter that George Fischer be notified in writing by the Purchaser of any purported defect immediately upon discovery. Notice concerning weight, numbers or apparent defects is to be given latest within 30 days from receipt of the Products, notice of other defects latest within the agreed warranty period.
- 14.3 Purchaser shall not dispose of allegedly defective Products until all warranty and/or damage claims are finally settled. At its request, defective Products are to be placed at George Fischer's disposal.
- 14.4 At its request, George Fischer shall be given the opportunity to inspect the damage, prior to commencement of remedial work, either itself or by third party experts.

15 Warranty

- 15.1 At the written request of the Purchaser, George Fischer undertake to repair or replace at their discretion, as quickly as possible and free of charge all Products supplied which demonstrably suffer from faulty design, materials or workmanship or from faulty operating or installation instructions.
Replaced parts shall become property of George Fischer.
For Products which are manufactured to specifications, drawings or patterns supplied by the Purchaser, George Fischer's warranty shall be restricted to proper materials and workmanship.
- 15.2 The Purchaser shall be entitled to cancel the contract or to demand a reduction in the contract price if:
 - repair or replacement is impossible, or
 - George Fischer are unable or refuse to remedy the defect or replace the defective Products within a reasonable, or
 - George Fischer are unduly delaying such remedy or replacement.
- 15.3 For Products or essential components manufactured by a third party and supplied by George Fischer under this contract, George Fischer's warranty is limited to the warranty provided by said third party.
- 15.4 This warranty shall not apply to damage resulting from normal wear, improper storage and maintenance, failure to observe the operating instructions, oversteering or overloading, unsuitable operating media, unsuitable construction work or unsuitable building ground, improper repairs or alterations by the Purchaser or third parties, the use of non-genuine parts and other reasons beyond George Fischer's control.
- 15.5 No action or claim may be brought by the Purchaser on account of any alleged breach of warranty or any other obligation of George Fischer after the expiration of twelve (12) months from receipt of the Products by the end user or at the latest within eighteen (18) months of the Products being despatched by George Fischer.
- 15.6 In case of Products for use in domestic installations or in utilities
 - George Fischer will assume the costs of dismantling the defective Product and restoring the damaged object as well as, in case of negligence, all other direct damages caused by the defective Product (damage to property and injury to or death of persons) up to CHF 1'000'000 per occurrence.
 - the statute of limitations for warranty or damage claims - contrary to Section 15.5 - will be 5 years from the date of installation.

16 Limitation of Liability

All cases of breach of contract and the relevant consequences as well as all rights and claims on the part of the customer, irrespective on what ground they are based, are exhaustively covered by these general conditions of supply. In particular, any claims not expressly mentioned for damages, reduction of price, termination of or withdrawal from the contract are excluded. In no case whatsoever shall the customer be entitled to claim damages other than compensation for costs of remedying defects in the supplies. This in particular refers, but shall not be limited, to loss of production, loss of use, loss of orders, loss of profit and other direct or indirect or consequential damage. This exclusion of liability, however, does not apply to unlawful intent or gross negligence on the part of George Fischer and in case of strict liability under applicable product liability statutes, but does apply to unlawful intent or gross negligence of persons employed or appointed by the supplier to perform any of its obligations.

17 Severability

Should any term or clause of these General Conditions in whole or in part be found to be unenforceable or void, all other provisions shall remain in full force and effect and the unenforceable or void provision shall be replaced by a valid provision, which comes closest to the original intention of the unenforceable or invalid provision.

18 Place of Performance and Jurisdiction

- 18.1 Place of performance for the Products shall be the George Fischer works from which the Products are despatched.
- 18.2 Any civil action based upon any alleged breach of this contract shall be filed and prosecuted exclusively in the courts of Schaffhausen, Switzerland.
George Fischer however reserves the right to file actions in any court having jurisdiction over controversies arising out of or in connection with the present contract.
- 18.3 The contract shall be governed by Swiss law without regard to conflict of law provisions that would require the application of another law.

1/2004

Australia

George Fischer Pty Ltd
Kingsgrove NSW 2008
Phone +61(0)2/95 54 39 77
sales@georgefischer.com.au
www.georgefischer.com.au

Austria

Georg Fischer
Rohrleitungssysteme GmbH
3130 Herzogenburg
Phone +43(0)2782/856 43-0
office@georgefischer.at
www.georgefischer.at

Belgium/Luxembourg

Georg Fischer NV/SA
1070 Bruxelles/Brüssel
Phone +32(0)2/556 40 20
info.be@be.piping.georgefischer.com
www.georgefischer.be

Brazil

George Fischer Ltda
04795-100 São Paulo
Phone +55(0)11/5687 1311

China

Georg Fischer Piping Systems Ltd Shanghai
Pudong, Shanghai 201319
Phone +86(0)21/58 13 33 33
info@cn.piping.georgefischer.com
www.cn.piping.georgefischer.com

Denmark/Iceland

Georg Fischer A/S
2630 Taastrup
Phone +45 (0)70 22 19 75
info@dk.piping.georgefischer.com
www.georgefischer.dk

France

Georg Fischer S.A.S.
93208 Saint-Denis Cedex 1
Phone +33(0)1/492 21 34 1
info@georgefischer.fr
www.georgefischer.fr

Germany

Georg Fischer GmbH
73095 Albershausen
Phone +49(0)7161/302-0
info@georgefischer.de
www.vgd.georgefischer.de

Georg Fischer DEKA GmbH
35232 Dautphetal-Mornshausen
Phone +49(0)6468/915-0
info@dekapipe.de
www.dekapipe.de

Greece

Georg Fischer S.p.A.
10434 Athens
Phone +30(0)1/882 04 91
office@piping-georgefischer.gr

India

George Fischer Piping Systems Ltd
400 093 Mumbai
Phone +91(0)22/2820 2362
branchoffice@georgefischer.net

Italy

Georg Fischer S.p.A.
20063 Cernusco S/N (MI)
Phone +3902/921 861
office@piping.georgefischer.it
www.georgefischer.it

Japan

Georg Fischer Ltd
556-0011 Osaka,
Phone +81(0)6/6635 2691
info@georgefischer.jp
www.georgefischer.jp

Malaysia

Georg Fischer (M) Sdn. Bhd.
47500 Subang Jaya
Phone +60 (0)3-8024 7879
conne.kong@georgefischer.com.my

Netherlands

Georgischer N.V.
8161 PA Epe
Phone +31(0)578/678 222
info.vgn@nl.piping.georgefischer.com
www.georgefischer.nl

Norway

Georg Fischer AS
1351 Rud
Phone +47(0)67 18 29 00
info@no.piping.georgefischer.com
www.georgefischer.no

Poland

Georg Fischer Sp. z o.o.
02-226 Warszawa
Phone +48(0)22/313 10 50
www.georgefischer.pl

Romania

Georg Fischer
Rohrleitungssysteme AG
70000 Bucharest - Sector 1
Phone +40(0)1/222 91 36
office@georgefischer.ro

Singapore

George Fischer Pte Ltd
417 845 Singapore
Phone +65(0)67 47 06 11
info@georgefischer.com.sg
www.georgefischer.com.sg

Spain/Portugal

Georg Fischer S.A.
28046 Madrid
Phone +34(0)91/781 98 90
info@georgefischer.es
www.georgefischer.es

Sweden/Finland

Georg Fischer AB
12523 Älvsjö-Stockholm
Phone +46(0)8/506 775 00
info@georgefischer.se
www.georgefischer.se

Switzerland

Georg Fischer Rohrleitungssysteme (Schweiz) AG
8201 Schaffhausen
Phone +41(0)52 631 30 26
info@rohrleitungssysteme.georgefischer.ch
www.piping.georgefischer.ch

United Kingdom/Ireland

George Fischer Sales Limited
Coventry, CV2 2ST
Phone +44(0)2476 535 535
info@georgefischer.co.uk
www.georgefischer.co.uk

USA/Canada/Latin America/Caribbean

George Fischer Inc.
Tustin, CA 92780-7258
Phone +1(714) 731 88 00, Toll Free 800/854 40 90
info@us.piping.georgefischer.com
www.us.piping.georgefischer.com

Export

Georg Fischer Rohrleitungssysteme (Schweiz) AG
8201 Schaffhausen
Phone +41(0)52 631 11 11
export@piping.georgefischer.com
www.piping.georgefischer.com