

A detailed line drawing of a ship's deck. A large crane is lifting a container from the deck. Various pieces of equipment, including a ladder and other deck fixtures, are visible. The drawing is in a technical, sketch-like style with some color highlights.

**Your partner for
material-handling technology
on seagoing vessels**

- FUCHS *Fördertechnik* AG -

Am Knick 18
D-22113 Oststeinbek
Germany
Tel.: +49 (0)40 7 100 100
Fax: +49 (0)40 7 100 1099
E-mail: info@fuchs-ag.de

- FUCHS *Fördertechnik* AG -



- FUCHS *Fördertechnik* AG -

- FUCHS *Fördertechnik* AG -

ENGINE ROOM CRANES AND MATERIAL HANDLING TECHNOLOGY

FUCHS *Fördertechnik* AG in Oststeinbek, Germany, is a manufacturer and supplier of engine room cranes, pump room cranes, monorail trolleys, articulated carriages, telescope cranes, monorail systems and special cranes.



Our company building, located in Oststeinbek near to the Hamburg harbour

Since the company was established in 1963 as a trading agency a rapid development has converted **FUCHS *Fördertechnik* AG** into a company with an extensive range of material handling technology for the shipbuilding sector as well as for the offshore and land based industries.

Today **FUCHS *Fördertechnik* AG** is a worldwide operating company with individual user oriented systems.

A continuous development program is pursued to meet latest demands of the marine and offshore industries, and the company's designers tailor the products to special customer requirements.



- ENGINE ROOM CRANES / PUMP ROOM CRANES

FUCHS *Fördertechnik* AG is market leader in the field of engine room cranes and pump room cranes with extremely short headroom and hook approach.



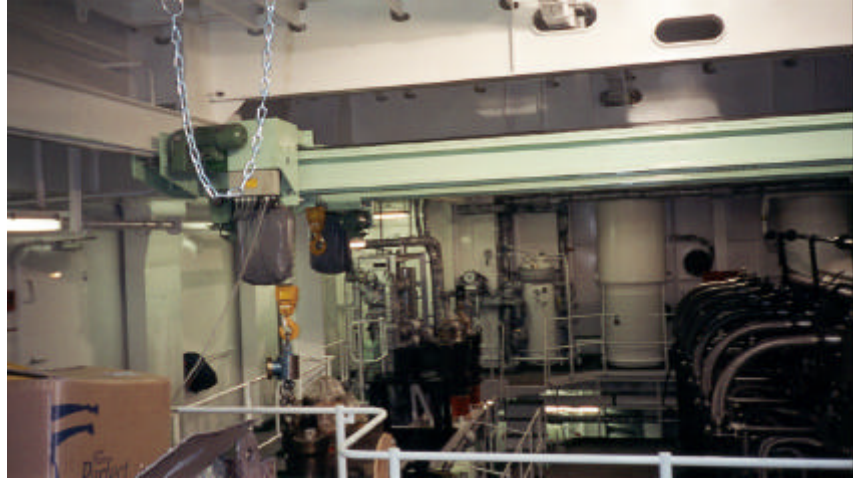
*Double girder engine room crane for a container carrier.
Span: 9000 mm, SWL 12,5t*



*Double girder Pump room crane for a dredger.
Span: 6750 mm, SWL 16,0t
Span: 6888 mm, SWL 30,0t*



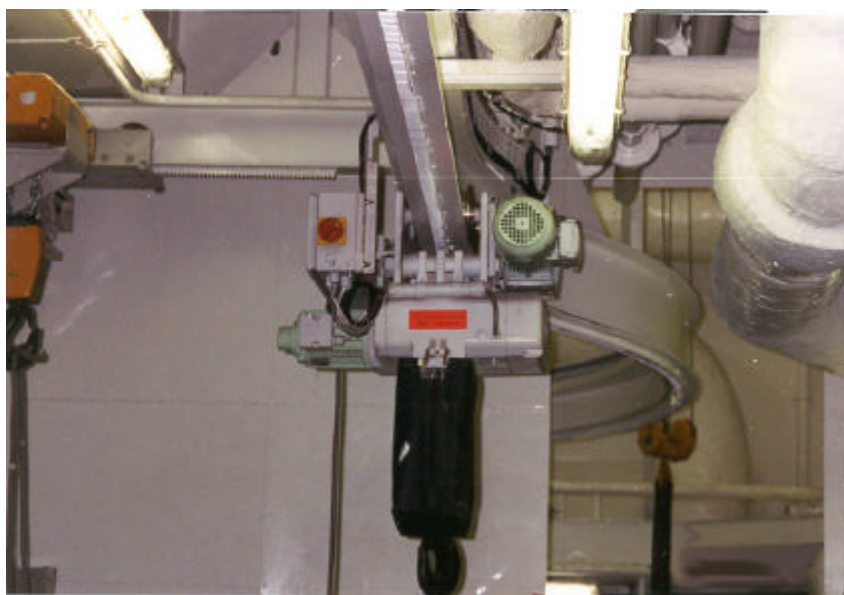
- ENGINE ROOM CRANES / PUMP ROOM CRANES



*Double jib engine room crane for a container carrier.
Span: 7500 mm, SWL 2x 2,5t*

- MONORAIL TROLLEYS / ARTICULATED CARRIAGES

A special subject is the development of monorail trolleys and articulated carriages with rack and pinion drive. Trolleys with a capacity up to 3,2t fit a bended beam with a radius of 800 mm, trolleys with a capacity of 25t to a bended beam with a radius of 2250 mm.

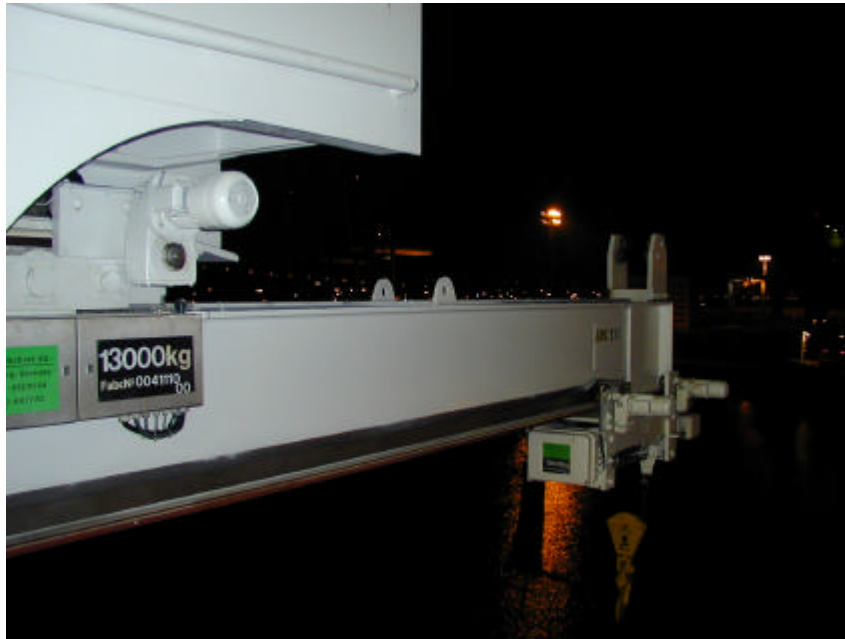


*Monorail trolley for a cruise liner.
Radius: 2400 mm, SWL: 5,0t*



- TELESCOPE CRANES / MONORAIL SYSTEMS

The product line covers telescope cranes below deck for e.g. hose handling, provision, ash containers, luggage handling, ship spares as well as open deck monorail systems up to SWL 13 t – outreach 7,5 m.



*Monorail system for a container vessel.
Outreach: 5000 mm, SWL: 13,0t*



*Telescope crane for a seismic research vessel.
Outreach: 5000 mm, SWL: 1,5 t*



- SPECIAL CRANES FOR NAVY VESSELS, YACHTS AND OFFSHORE INDUSTRIES

FUCHS *Fördertechnik* AG has developed a product line with special cranes e.g. helicopter service crane, ammunition cranes, cranes for torpedo handling, fire prevention walls for helicopter hangar, telescopic rails for boats, telescopic rails for waterjets and cranes/trolleys for offshore vessels.

FUCHS *Fördertechnik* AG has established a quality system in conformity with DIN EN ISO 9001 approved by DNV.

Certificates from ABS, BV, CCS, DNV, GL, KR, LRS, RINA or any other classification society and certifying institution (e.g. CSA-special acceptance) of customer's choice are available.

Take advantage of our experience!

We develop, produce and deliver systems ready to be fitted according **to your requirements.**

Our experienced engineers will assist you during all phases of the project, from the planning until the final completion.

FUCHS *Fördertechnik* AG

Am Knick 18
22113 Oststeinbek
Germany
Tel.: +49 40 7 100 100
Fax: +49 40 7 100 1099
E-Mail: info@fuchs-ag.de