

2. Oil Cleaning Systems - 2 Product Information - 39 Separation System PA

MIDPC Acrobat Enclosure

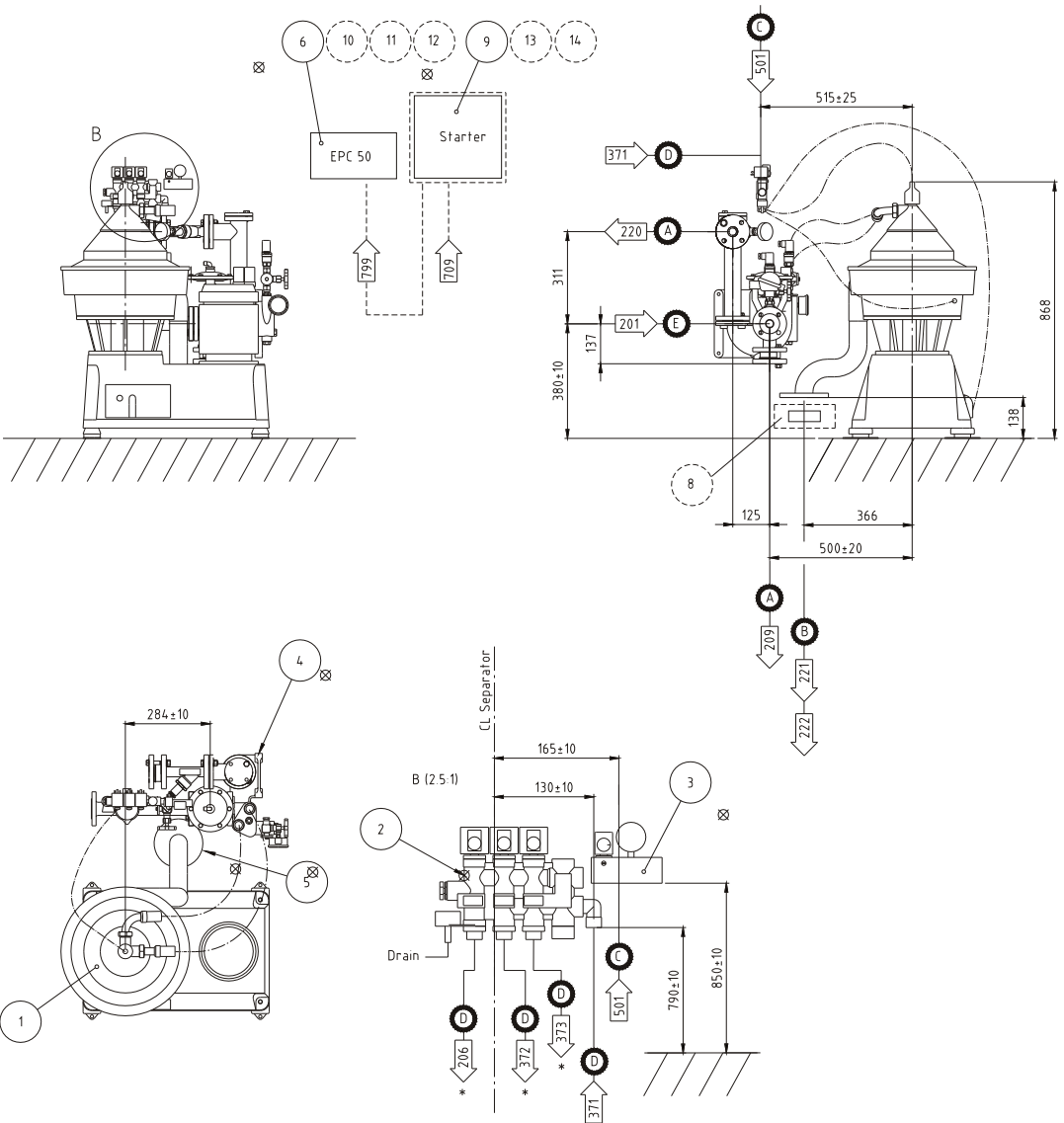
2.2.39.1-1 Equipment Specification PA 600 Mounting Drawing DIN

- 201 Oil inlet
- 206 Water for seal and displacement
- 209 Oil recirculation to tank
- 220 Clean oil outlet
- 221 Water outlet
- 222 Sludge discharge outlet
- 371 Operating water
 - pH value: Not below 6
 - Hardness: Max 10° dH
 - Salinity: Max 60 ppm Cl
(Equivalent to 100 ppm NaCl)
 - Pressure: 600-800 kPa (6-8 bar)
 - Temperature: Min. -5°C max. +55°C
- 372 Opening water
- 373 Closing water
- 501 Operating air
Instrument air
Pressure: 500-700 kPa (5-7 bar)
- 540 Ventilation
- 709 230V/3x4.00/4.40V/480V/575V/690V
Mains supply
- 799 EPC Supply voltage
230,110/115 or 100V

CONNECTIONS

- A Flange DN25-PN16-DIN2633
- B Flange DN50-PN6-DIN2573
- C ISO G 1/4
- D ISO G 1/2
- E Flange DN40-PN6-DIN

- Optional
- * Internal flexible connection
(Enclosed with delivery)



Ref. 571326 Rev. 0

Marine Product Catalogue
Illustrations, indications of material, dimensions and weights etc herein, do not constitute any commitment on our part.
We reserve the right to change such specifications when necessary.