

7.5.5.1 General description

Application

The STAWA-42 Combined Starter and Monitoring Unit is intended for use with solid bowl type separator cleaning systems to start both the separator and oil feed pump and to monitor the cleaning process.

System design

An on/off switch together with three switches with associated indicator lamps, a process alarm indicator and an ammeter are fitted on the front panel of the cabinet.

Access to the fuses and relays inside the cabinet is done by opening the front panel.

Function

Two separate switches are used to start the oil feed pump and separator. The ammeter shows the current drawn by the separator motor. A third switch is used to start the oil cleaning process, by controlling the position of a change-over valve.

During normal operation the STAWA-42 monitors oil outlet pressure. If the outlet pressure falls this is an indication that the separator water seal is broken. If this occurs the cleaning process is stopped by changing the change-over valve position and an alarm is given, by both an indicator and an alarm bell.

Article No.	Name
1764170-01 to -07	Combined starter and water seal alarm STAWA-42

References

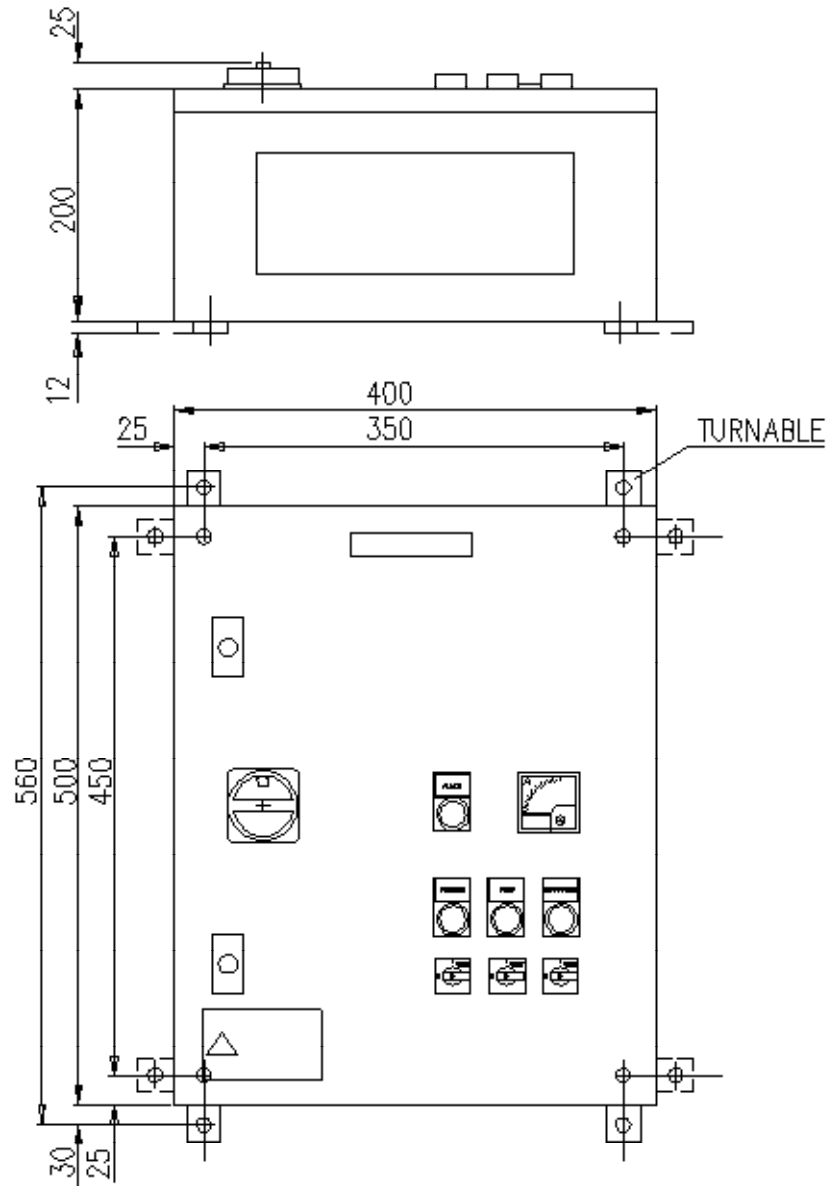
7.5.5.2	Technical data
7.5.5.3	Dimension drawing
7.5.5.4	Spare parts
7.5.5.5	Electrical diagrams

7.5.5.2 Technical data

Control voltage	48 V AC (transformer included)
High voltage tested at	2500 V in 2 minutes
Power supply	220, 380, 415 or 440 V, 50/60 Hz
Fuses	Max. 35 A
Enclosure	IP 55
Ambient temperature	Max. 55°C
Weight	~18 kg
Dimensions	See Dimension drawing
Cabinet material	Sheet of steel

Article No.	Current range Separator	Current range Pump
1764170-01	4,0 - 6,3 A	2,5 - 4,0 A
1764170-02	4,0 - 6,3 A	4,0 - 6,3 A
1764170-03	6,3 - 10 A	2,5 - 4,0 A
1764170-04	6,3 - 10 A	4,0 - 6,3 A
1764170-05	6,3 - 10 A	6,3 - 10 A
1764170-06	10 - 12,5 A	4,0 - 6,3 A
1764170-07	10 - 12,5 A	6,3 - 10 A

7.5.5.3 Dimension drawing

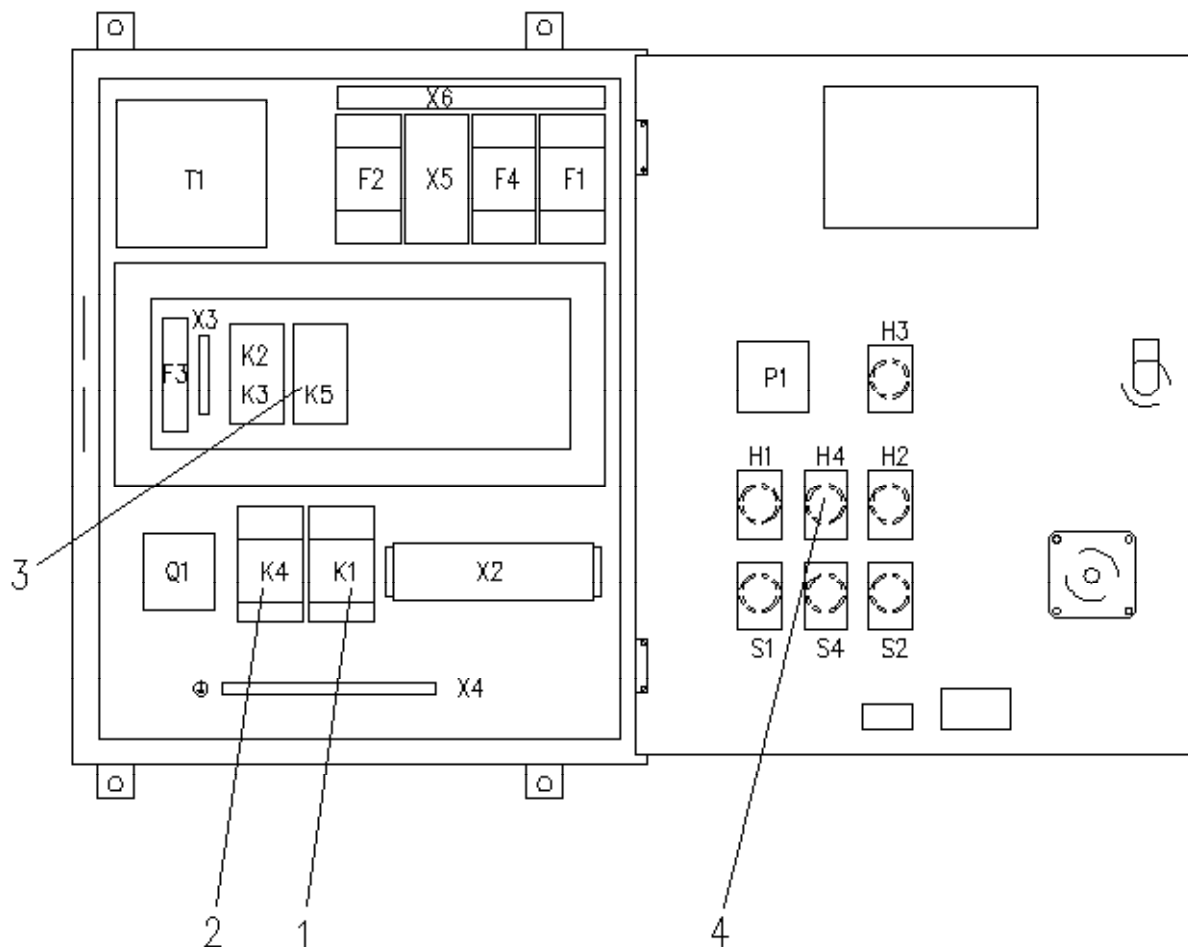


REF. 1764171 REV. 1

x005922a

Article No.	Name
1764170-01 to -07	Combined starter and water seal alarm STAWA-42

7.5.5.4 Spare parts



g040902a

Recommended spare parts for Combined starter and water seal alarm STAWA-42, 1764170-01 to -07

Item	Name	Remarks	For 3 year operation	Qty
1	Contactora	K1	1)	1
2	Contactora	K1	2)	1
3	Contactora	K4	1), 2)	1
4	Auxillary relay	K3, K5	1), 2)	2
5	Timing module		1), 2)	1
6	Bulb	For indicators	1), 2)	15

1) Included in Kit No. 1764175-01

1) Included in Kit No. 1764175-02

Kit No.	Intended for Article No.
1764175-01	1764170-01 to -05
1764175-02	1764170-06 to -07

7.5.5.5 Electrical diagram

Article No.	Name
1764170-01 to -07	Combined starter and water seal alarm STAWA-42



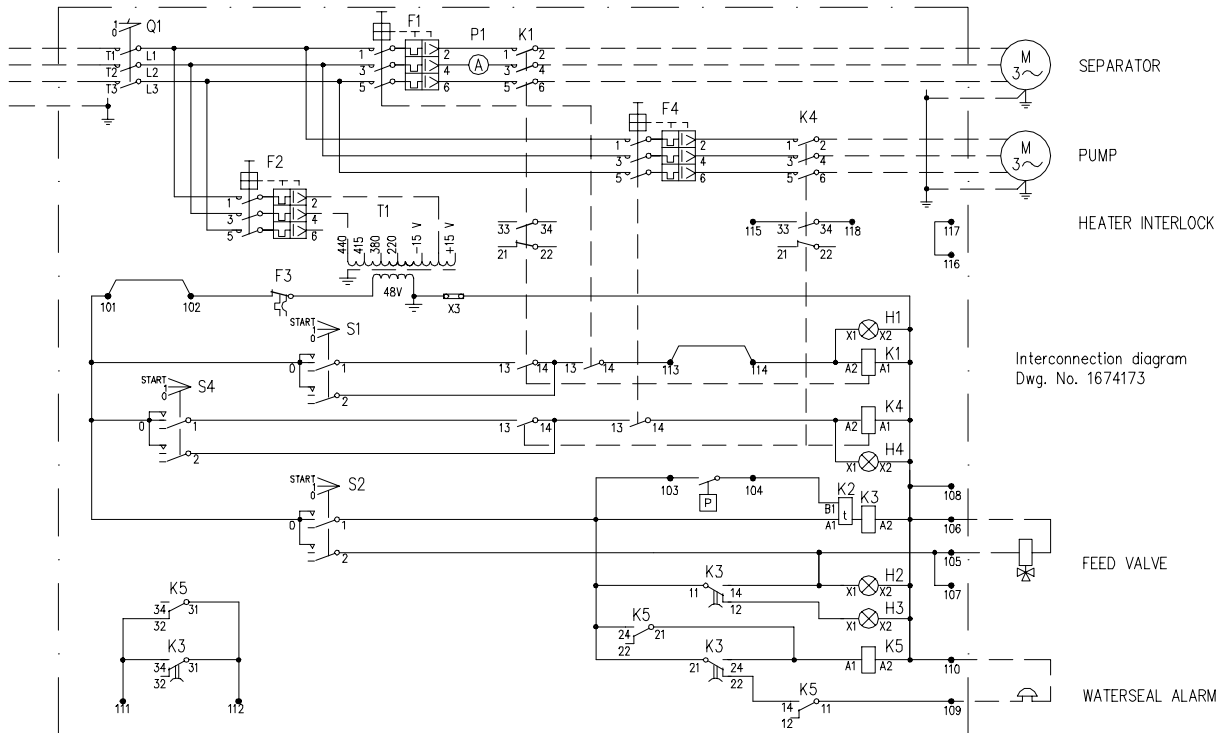
X005932A.PDF

Circuit diagram

Drawing No. 1764172



7.5.5.5 Circuit diagram



Interconnection diagram
Dwg. No. 1674173

STAWA-42
STARTER FOR SEPARATOR AND PUMP
WITH WATERSEAL ALARM INCLUDED
CIRCUIT DIAGRAM.

REF. 1764172 REV. 2

X005932A