



Kto Supply Sas

Via XX settembre 20/52 – IT 16121 – Genoa
Ph. +39 010 8681941 – Fax. +39 010 542831
info@cappato.net - www.cappato.net

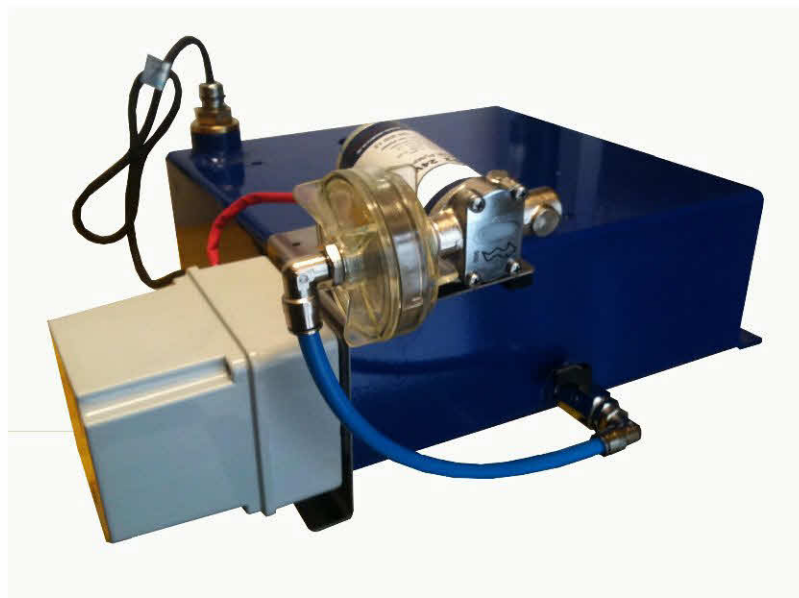
DATA – Date: 11 September 2009	DOCUMENT N° - Doc. N° SRK-SCU-02										
Pag-Sh 1 di-of 12	Rev. 2										
Updated in : 4/06/2010	<table border="1"><tr><td>0</td><td>1</td><td>2</td><td></td><td></td></tr><tr><td></td><td></td><td></td><td></td><td></td></tr></table>	0	1	2							
0	1	2									

MIB 303

Sludge Removal Kit

with

Alfa Laval standard control panel





Kto Supply Sas

Via XX settembre 20/52 – IT 16121 – Genoa

Ph. +39 010 8681941 – Fax. +39 010 542831

info@cappato.net - www.cappato.net



Study instruction manuals and observe the warnings before installation, operation, service and maintenance.

Not following the instructions can result in serious accidents with fatal injuries.

In order to make the information clear only foreseeable conditions have been considered. No warnings are given, therefore, for situations arising from unintended usage of the machine and its tools.



Kto Supply Sas

Via XX settembre 20/52 – IT 16121 – Genoa

Ph. +39 010 8681941 – Fax. +39 010 542831

info@cappato.net - www.cappato.net

Contents

- 1 Function Description**
 - 1.1 Application**
 - 1.2 Design**

- 2 Technical data**
 - 2.1 Specification**
 - 2.2 Dimensions**
 - 2.3 Spare parts**

- 3 Installation Instruction**
 - 3.1 Pump Installation**
 - 3.2 Control Panel and Junction Box Installation**
 - 3.3 Connection Diagram**

- 4 Safety Information and Troubleshooting**



Kto Supply Sas

Via XX settembre 20/52 – IT 16121 – Genoa
Ph. +39 010 8681941 – Fax. +39 010 542831
info@cappato.net - www.cappato.net

1. Function description

1.1 Application

The Sludge Removal Kit (SRK) is used to remove sludge from tank below Alfa Laval MIB303 system.

SRK is electric operated by 24 V DC.

SRK it has installed in combination with standard Alfa Laval control panel.

1.2 Design

Operation of SRK is automatic, system is controlled automatically by the level switch installed on the sludge tank under the separator.

Level switch start the pump when level is high.

The alarm on Alfa Laval standard control panel is not bypassed by the SRK. This means that all alarms foresee in the Alfa Laval control panel are maintained.



Kto Supply Sas

Via XX settembre 20/52 – IT 16121 – Genoa

Ph. +39 010 8681941 – Fax. +39 010 542831

info@cappato.net - www.cappato.net

2. Technical data

2.1 Specification

- Power supply: 24V DC
- Max fuse: 6A
- Control Panel & Junction Box: Grade IP66
- Min ambient temperature: 2°C - Max ambient temperature: 60 °C
- Pump Type: screw
- Control panel: Metal
- Junction Box: Alogen Free Plastic
- Total Weight: Approx. 2 kg



Kto Supply Sas

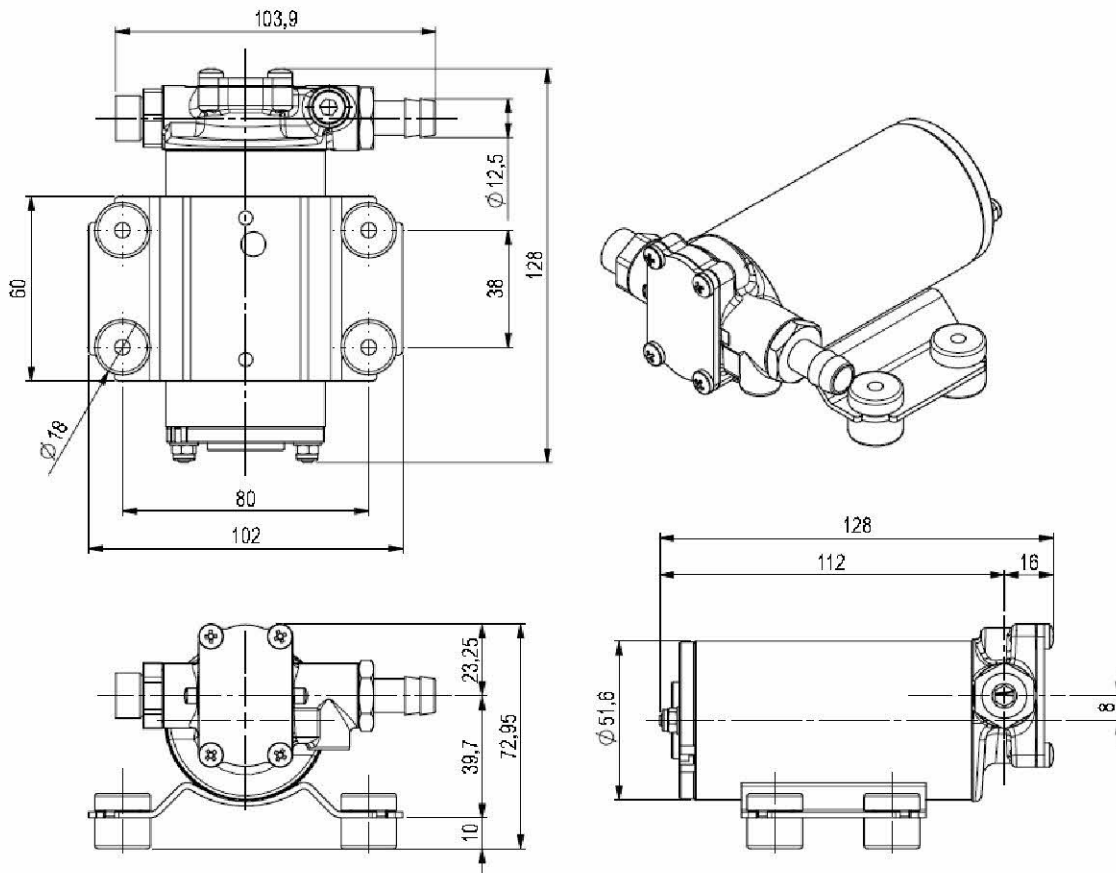
Via XX settembre 20/52 – IT 16121 – Genoa
Ph. +39 010 8681941 – Fax. +39 010 542831
info@cappato.net - www.cappato.net

2. Technical data

MIB-303 Sludge Removal Kit

2.2 Dimension

PUMP



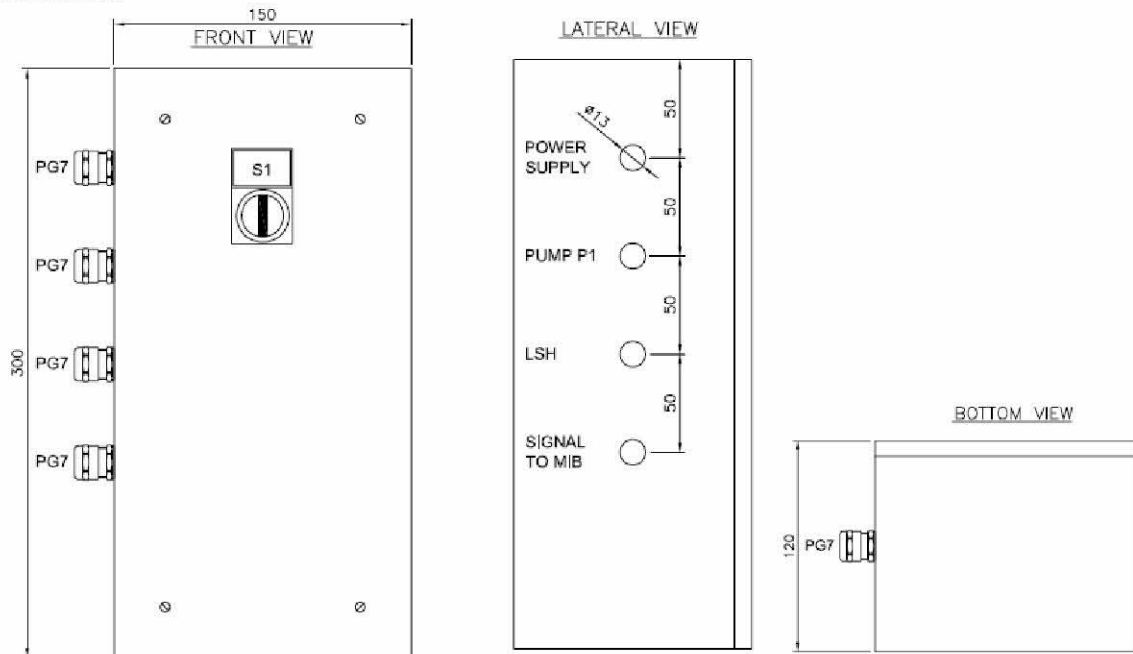


Kto Supply Sas

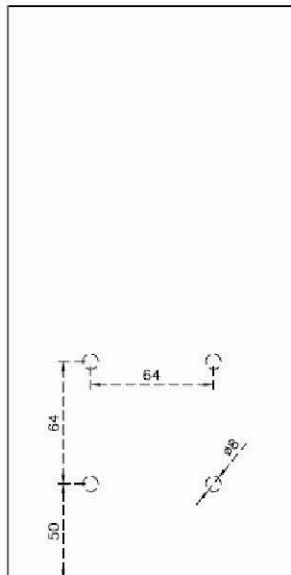
Via XX settembre 20/52 – IT 16121 – Genoa
Ph. +39 010 8681941 – Fax. +39 010 542831
info@cappato.net - www.cappato.net

Control panel and Junction Box

Control Panel



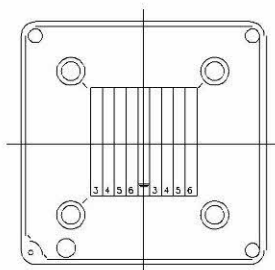
BACK VIEW



TECHNICAL DATA

Main Power	: 24V DC
Incoming Supply	: Max fuse 10A
Control Voltage	: 24V DC
Cabinet Material	: Sheet of steel
Protection Class	: IP 66
Weight	: Approx. 5 kg
Cables Incoming	: Left position
Painting	: RAL 7035
Spare	: 10%

Junction Box





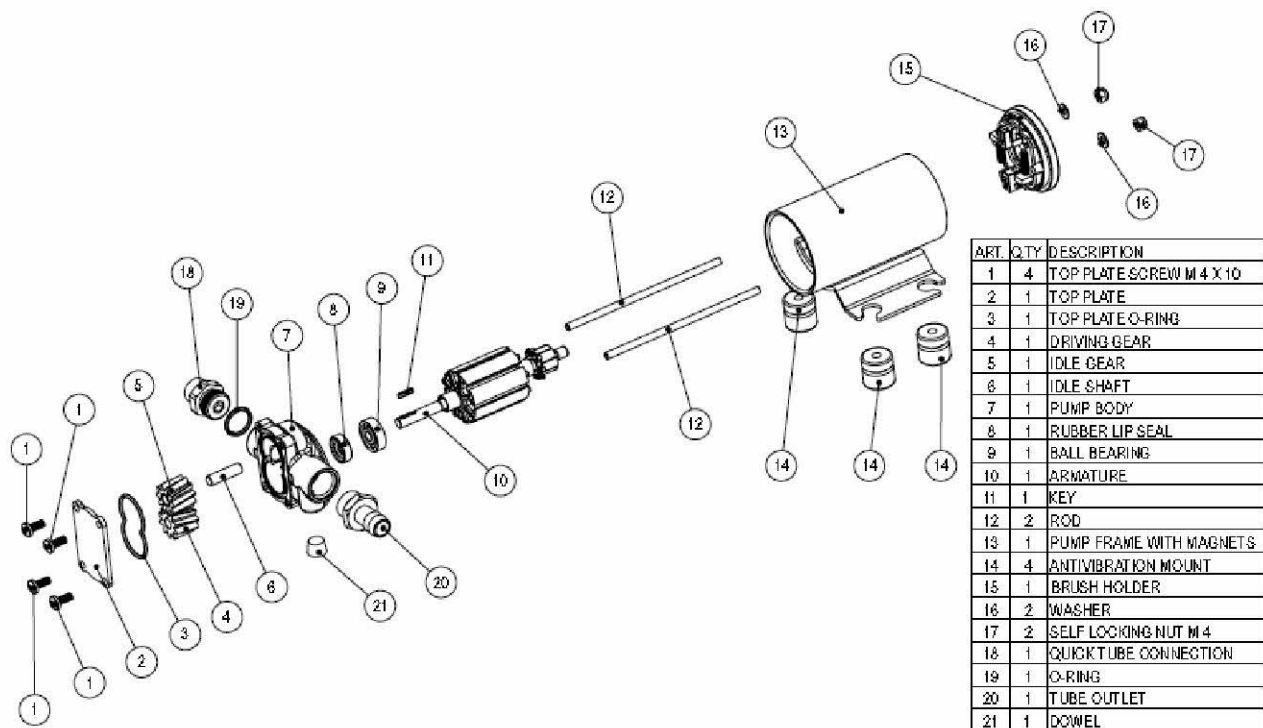
Kto Supply Sas

Via XX settembre 20/52 – IT 16121 – Genoa
Ph. +39 010 8681941 – Fax. +39 010 542831
info@cappato.net - www.cappato.net

2. Technical data

MIB-303 Sludge Removal Kit

2.3 Spare parts



ART.	QTY	DESCRIPTION
1	4	TOP PLATE SCREW M 4 X 10
2	1	TOP PLATE
3	1	TOP PLATE O-RING
4	1	DRIVING GEAR
5	1	IDLE GEAR
6	1	IDLE SHAFT
7	1	PUMP BODY
8	1	RUBBER LIP SEAL
9	1	BALL BEARING
10	1	ARMATURE
11	1	KEY
12	2	ROD
13	1	PUMP FRAME WITH MAGNETS
14	4	ANTIVIBRATION MOUNT
15	1	BRUSH HOLDER
16	2	WASHER
17	2	SELF LOCKING NUT M 4
18	1	QUICK TUBE CONNECTION
19	1	O-RING
20	1	TUBE OUTLET
21	1	DOWEL

Check every month the pump chamber and keep clean from any foreign matter.
Check every month that electrical wiring is in good condition.
Every 800 hours of pump operation substitute the motor brushes.



Kto Supply Sas

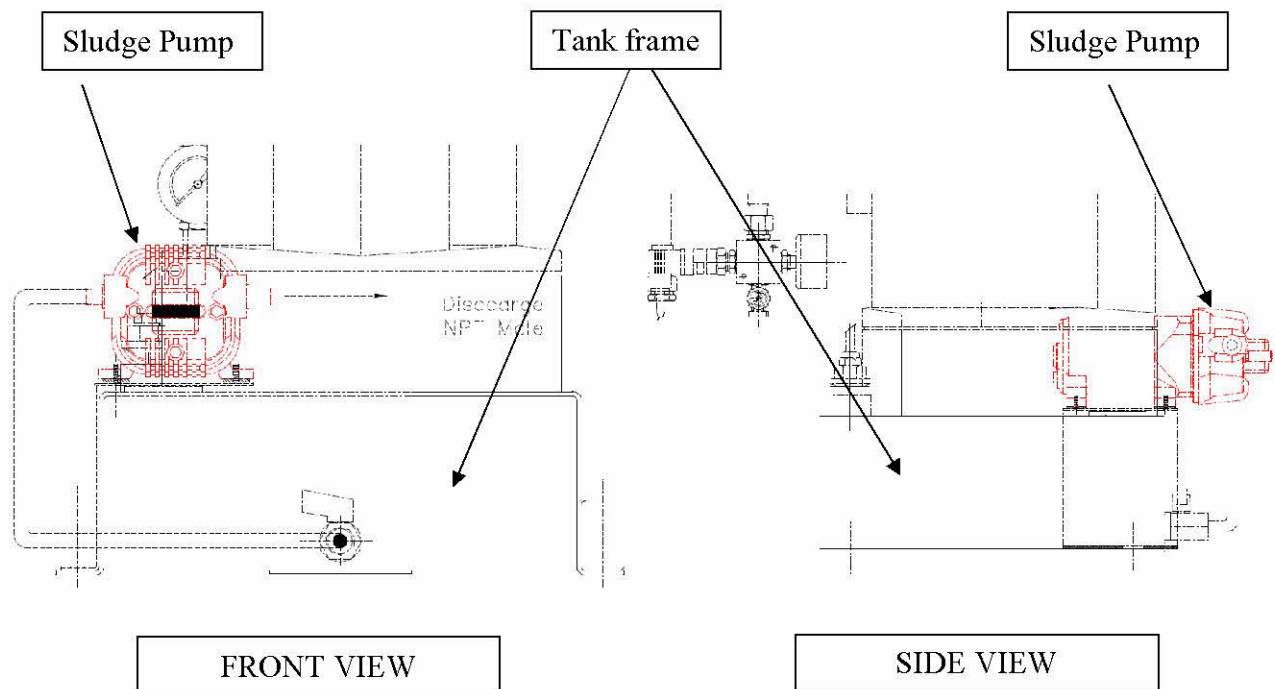
Via XX settembre 20/52 – IT 16121 – Genoa
Ph. +39 010 8681941 – Fax. +39 010 542831
info@cappato.net - www.cappato.net

3. Installation

MIB-303 Sludge Removal Kit

3. Installation Instruction

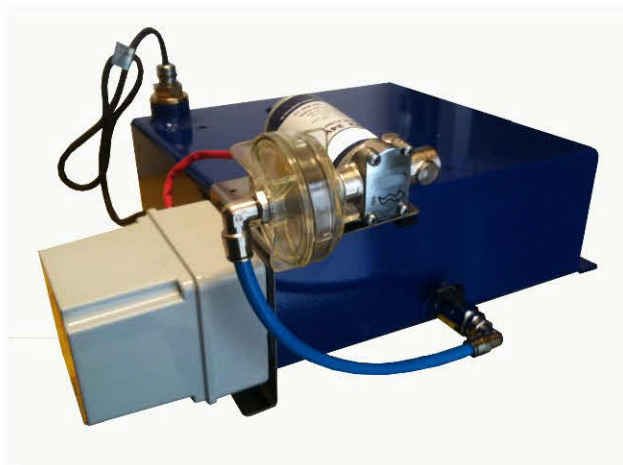
3.1 SRK Installation on MIB303 tank frame



Tank connection: 1/2" R Female

Pump connection: 3/8" R Female

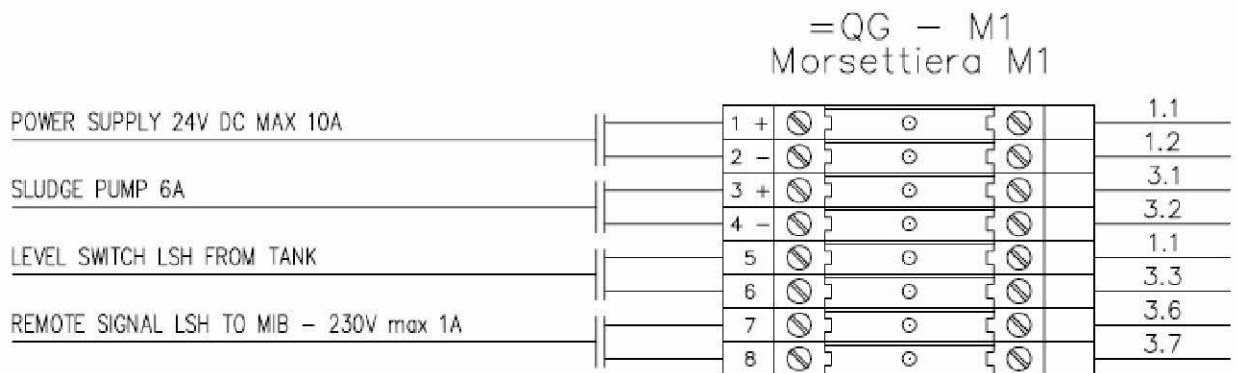
From Tank to pump is used Rilsan Pipe Diam. 10mm



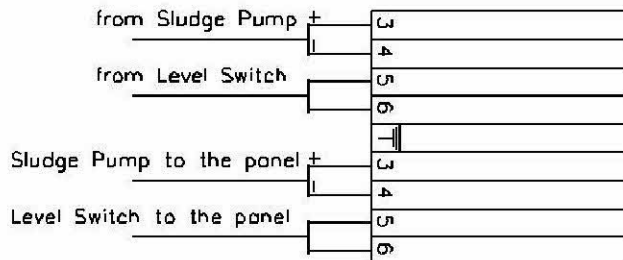


3.2 Control Panel and Junction Box Connection diagram

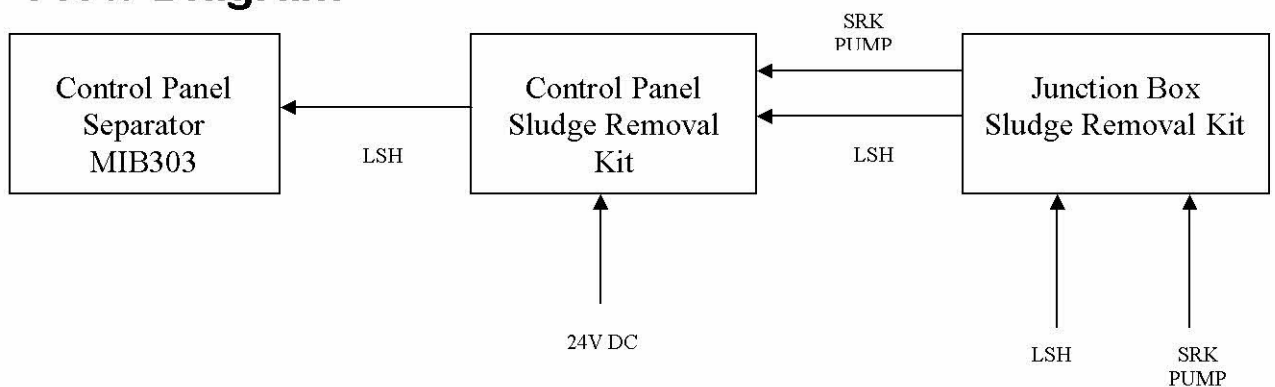
Control Panel



Junction Box



Flow Diagram





Kto Supply Sas

Via XX settembre 20/52 – IT 16121 – Genoa
Ph. +39 010 8681941 – Fax. +39 010 542831
info@cappato.net - www.cappato.net

4. Safety Information and Troubleshooting

Pump

- Do not run dry
- Clean periodically the filter on the inlet side
- Control the impeller yearly

Troubleshooting

Check point if the pump has stopped or will not start

- Check the effectiveness of the battery power supply (voltage activity)
- Check if the fuse in the SRK control panel has blown
- Check for any foreign matter present in-between the pump gear drives. To do this, disconnect the power supply and unscrew the four fixing screws, remove the pump front cover plate and inspect the pump chamber. Replace the cover plate in the same initial position after inspection.
- The average life span of the motor commutator brushes is approximately 500/700 hours under normal operating conditions. After such period stoppages are possible due to brush wear and tear.

Why the pump will not prime itself

- The pump is fitted at a height greater than 1,5 mt above the fluid
- The pump has run dry for too long period
- Air leak in the suction side pipe due to possible cuts, etc
- Clogging of the filter
- Presence of restriction or obstruction in the pipes
- Presence of liquid loops in the outlet tube

It is recommended that a specialized service technician be consulted for any pump repair work or replacement of worn out internal components, exclusively with original spare parts.